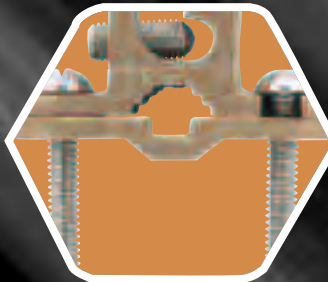
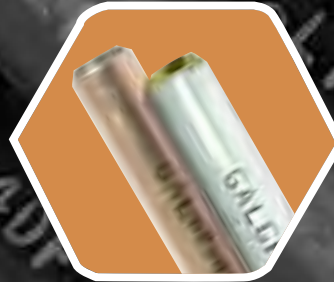


Galvan Industries, Inc.

galvanelectrical.com



Electrical Products Catalog



By Product Category

Ground Rods	5-6	Multi-Tap Connectors	30-31
Ground Rod Clamps.	7	Transformer Lug Kits	32
Grounding Accessories	8-9	Parallel & Tee Tap Connectors.	33
Pipe Clamps	9-10	Aluminium Tap Connectors.	34
Pipe Clamps & Bonding Grounding Connectors	11	Neutral Bars & Mounting Block	35
Ground Clamps & Groove Connectors	12-13	Compression Connectors	36-41
Utility	14-18	Compression Splices.	42-43
Bonding & Grounding Connectors	19-20	Copper Mechanical Connectors	44-45
Insulation Piercing Connectors.	21	Cable Ties & Accessories	46-47
Split Bolts	22-23	Wire Marker Books & Oxide Inhibitor.	48
Dual Rated Mechanical Connectors	24-26	Compression Tools	49-51
Aluminum Mechanical Splices	27	Die Sets.	52-53
Aluminum PanelBoard Connectors	28	Installation Tooling Information	53-54
Lay-in Connectors	29		
2ABV	28	GRD	17
2CLA	37	GT	33
3ABV	28	GTC	17
4ABV	28	Ground Rods	5-6
6ABV	28	H	14
A	23	IPC	21
APC	19	ITO	31
C (Cable Ties)	46-47	ISR	31
CC (hot line clamps)	13	IPL	31
CC (vise connector)	20	IPLD	31
CC (1 hole compression lug)	38	JAB (Heavy duty rod clamps)	7
CCB	39	JD	10
CCBL	41	JRD	10
CCIT	51	K (bonding clamp)	19
CCL	40	K (copper split bolts)	22
CLA	36	KCCA	20
CF	44	L1	24
CFS	44	L2	25
CMCT	49	L3	26
CMIT	50	L4	26
CO-OX	48	LA	24
CR	17	LI	29
CSL	43	LIC	29
CSS	42	MB	48
DCF	44	Mounting Pads	51
DCG	10	PAA	16
DGC	18	PAC	16
Die Sets	52-53	PB	14
DLA	25	PV	28
Drive Studs	9	S (tin plated copper split bolt)	22
FLC	45	SA	37
G (acorn clamps)	7	SNB	35
GC (dual-rated pipe clamps)	9	SR	27
GC (water pipe clamps)	10-12	SRC	7
GC (transformer ground connectors)	15	TGC	20
GH	13	TC	34
GGPT	34	TTC	15
GLH	13	Tools	47, 49-51
GP (ground plates)	14	Transformer Lug Kits	32
GP (parallel connectors)	33	VC	14
GP100	14		
GRC (Ground Rod Coupling)	8	Cross-Reference	55-78

Meet The Code

Length, Diameter and Materials Matter In Determining if Ground Rods Meet Code

A Listing Mark Is Your Assurance That All Requirements Are Met

Fact: Most ground rod electrodes at least 0.625 inches in diameter and eight feet in length meet the NEC, but that's not always the case. For example, copper-coated rods that don't have a minimum of 10 mils of copper do not meet code. Without the listing stamp, you don't know what the copper coating thickness actually is. Rods that aren't fully eight feet long do not meet code either, but once the rod has been driven it is difficult for inspectors to determine a rod's length. The listing mark - with manufacturer's ID - is the only sure way to know your galvanized or copper-coated rod is fully code compliant.

Listing of a ground rod assures you that the product you purchased was manufactured to comply with NEC standards. It also simplifies inspections since special tools and equipment are not required to ensure compliance with code.

All Components Should Be Listed

According to Underwriters' Laboratories, mixing listed and non-listed components in a grounding system makes the whole system unlisted and potentially unsafe. That's why Galvan offers a complete listed grounding system including couplings, clamps, connectors, copper-clad ground rods and the only listed galvanized ground rods on the market today.

For more information about safe grounding or Galvan grounding products, contact Galvan at 704-455-5102 or go to www.galvanelectrical.com. When safety matters, you can count on Galvan Electrical Products.

Galvan Industries, Inc.
galvanelectrical.com • 1-800-277-5678



GALVANIZED/STAINLESS GROUND RODS



Hot Dip Galvanized Ground Rods

- Outstanding corrosion resistance; high-strength steel is emersed in molten zinc forming a rust-proof barrier.
- Minimum zinc thickness 3.9 mils. (per ASTM A-123)
- Meets NEMA and ANSI C135.30 requirements.
- Stamped UL for inspectability.



UL Listed "Gold Series" Rods

Catalog Number	Nominal Diameter X Length	Actual Diameter Inches	Sub & Master Bundle	Wt. Per 100	NAED UPC No. 632591-
GR6258 [§]	5/8" x 8'	0.539-0.555	5 / 100	640	70702-2
GR6250 [§]	5/8" x 10'	0.539-0.555	5 / 100	941	70703-9
GR7508 ^{*§}	3/4" x 8'	0.657-0.675	5 / 50	1200	70704-6
GR7510 [§]	3/4" x 10'	0.657-0.675	5 / 50	1500	70705-3
GR1008 [§]	1" x 8'	0.970-1.010	25	2200	61471-9
GR1010 [§]	1" x 10'	0.970-1.010	25	2700	70762-6

Notes: * RUS Listed §-UL Listed, meets the NEC Code °-CSA Listed

Note: Rods less than 8' (96 inches) do not meet the NEC Code.



Catalog Number	Nominal Diameter X Length	Actual Diameter Inches	Sub & Master Bundle	Wt. Per 100	NAED UPC No. 632591-
NON-LISTED RODS					
GR5005**	1/2" x 5'	0.484-0.500	10 / 100	334	70731-2
GR5006	1/2" x 6'	0.484-0.500	10 / 100	410	70732-9
GR5008	1/2" x 8'	0.484-0.500	10 / 100	534	70733-6
GR6255F	5/8" x 5'	0.625-0.640	5 / 100	470	70700-8
GR6256F	5/8" x 6'	0.625-0.640	5 / 100	574	70701-5
LISTED RODS					
GR6258F* **§	5/8" x 8'	0.625-0.640	5 / 100	770	61299-9
GR6250F* **§	5/8" x 10'	0.625-0.640	5 / 100	1040	61304-0
GR7508F [§]	5/8" x 8'	0.750	5 / 50	1200	
GR7510F* [§]	3/4" x 10'	0.750-0.769	5 / 50	1500	
GR1010F* [§]	1" x 10'	1.000-1.040	5/50	2900	70762-6

Notes: *-Denotes Listed in US and Canada **-RUS Listed §-Listed CSA for US and Canada

304 Solid Stainless-Steel Ground Rods



Catalog Number	Nominal Diameter X Length	Actual Diameter Inches	Sub & Master Bundle	Wt. Per 100	NAED UPC No. 632591-
S5010*	1/2" x 10'	0.500-0.515	5 / 25		
S6255S	5/8" x 5'	0.625 ^{+0.010/-0.000}	5 / 25	525	70737-4
S6256	5/8" x 6'	0.625 ^{+0.010/-0.000}	5 / 25	624	70738-1
S6258* **	5/8" x 8'	0.625 ^{+0.010/-0.000}	5 / 25	832	70745-9
S6258S*	5/8" x 8'	0.625 ^{+0.010/-0.000}	5 / 25	832	
S6260*	5/8" x 10'	0.625 ^{+0.010/-0.000}	5 / 25	1040	70726-8
S6260S*	5/8" x 10'	0.625 ^{+0.010/-0.000}	5 / 25	1040	70725-1
S6212	5/8" x 12'	0.625 ^{+0.010/-0.000}	5 / 25	1248	70723-7
S7508*	3/4" x 8'	0.750 ^{+0.015/-0.000}	5 / 25	1200	
S7508S*	3/4" x 8'	0.750 ^{+0.015/-0.000}	5 / 25	1200	
S7510*	3/4" x 10'	0.750 ^{+0.015/-0.000}	5 / 25	1500	70734-3
S7510S*	3/4" x 10'	0.750 ^{+0.015/-0.000}	5 / 25	1500	70759-6
S1010*	1" x 10'	1.0 ^{+0.020/-0.000}	5 / 25	2700	70710-7
S1010S*	1" x 10'	1.0 ^{+0.020/-0.000}	5 / 25	2700	70711-4

Notes: S-Denotes sectional ground rod * Denotes Listed CSA for US and Canada
 ** RUS and Listed CSA for US and Canada

Pig-Tail Rods



Contact factory for quotation of copper clad and hot-dip galvanized pig-tail rods. Provide rod type, size, wire type, gage and length.



COPPER BONDED GROUND RODS

Copper Coated Ground Rods

- Galvan's copper coated rods have a heavy, uniform coating of copper metallurgically bonded to a rigid steel core.
- UL Listed rods have 10-mil minimum copper plating. UL/RUS models have 13-mil minimum of copper.
- Galvan manufactures copper-coated rods under patent 6,527,934



Catalog Number	Nominal Diameter X Length	Actual Diameter Inches	Sub & Master Bundle	Wt. Per 100	NAED UPC No. 632591-
5005	1/2" x 5'	0.471-0.481	5 / 100	305	61125-1
5006	1/2" x 6'	0.471-0.481	5 / 100	370	61126-8
5008	1/2" x 8'	0.471-0.481	5 / 100	500	61128-2
5008L*	1/2" x 8'	0.500-0.510	5 / 100	545	61138-1
5010	1/2" x 10'	0.471-0.481	5 / 100	611	61120-6
5010L*	1/2" x 10'	0.500-0.510	5 / 100	690	61130-5
6254	5/8" x 4'	0.555-0.565	5 / 100	340	
6255	5/8" x 5'	0.555-0.565	5 / 100	424	61585-3
6256	5/8" x 6'	0.555-0.565	5 / 100	508	61586-0
6258*	5/8" x 8'	0.555-0.565	5 / 100	680	61588-4
6258G13**	5/8" x 8'	0.561-0.571	5 / 100	700	61217-3
6260*	5/8" x 10'	0.555-0.565	5 / 100	847	61580-8
6260G13**	5/8" x 10'	0.561-0.571	5 / 100	860	61218-0
7508*	3/4" x 8'	0.673-0.683	5 / 50	992	61548-8
7510*	3/4" x 10'	0.673-0.683	5 / 50	1240	61340-8
1010*	1" x 10'	0.907-0.917	25	2248	61440-5

Notes: * These rods are UL Listed

** These rods meet the requirements of UL & RUS (13 mils minimum of copper).

Rods less than eight feet or less than 10 mils of copper, **do not** meet UL requirements, nor the NEC Code.

Copper Coated Sectional Ground Rods

- Threaded on both ends.



Catalog Number	Nominal Diameter X Length	Actual Diameter Inches	Sub & Master Bundle	Wt. Per 100	NAED UPC No. 632591-
5008LS*	1/2" x 8'	0.500-0.510	5/100	545	63138-9
5010LS*	1/2" x 10'	0.500-0.510	5/100	690	63130-3
6258S*	5/8" x 8'	0.555-0.565	5/100	678	63588-2
6258G13S**	5/8" x 8'	0.561-0.571	5/100	700	61121-3
6260S*	5/8" x 10'	0.555-0.565	5/100	847	63580-6
6260G13S**	5/8" x 10'	0.561-0.571	5/100	871	61121-3
7508S*	3/4" x 8'	0.673-0.683	5/50	922	63348-2
7510S*	3/4" x 10'	0.673-0.683	5/50	1240	63340-6
1010S*	1" x 10'	0.907-0.917	25	2248	63440-3

Notes: * These rods are UL Listed

** These rods meet the requirements of UL & RUS (13 mils minimum of copper).

Rods less than eight feet or less than 10 mils of copper, **do not** meet UL requirements nor the NEC Code.



SRC Universal Ground Rod Clamp

- Bronze alloy or stainless steel hardware both UL listed and approved for direct burial in earth and concrete.
- Performs the functions of economy, standard duty, heavy duty, and extra heavy duty
- Able to withstand torque in excess of 350 in/lb
- RUS listed



One Clamp Fits 1/2, 5/8 and 3/4 Rod Diameters.

Catalog Number	Rod Size	Conductor Range	Sub & Master Pack	Wt. Per 100	NAED UPC No. 632591-
SRC	1/2"	1/0 - 10 Sol.	100 / 600	16	613286
SRC	5/8"	1/0 - 10 Sol.	100 / 600	16	613286
SRC	3/4"	1/0 - 10 Sol.	100 / 600	16	613286

Notes: Listed for galvanized and copper ground rods
UL Listed for US and Canada

Budget Ground Rod Clamps (Hex-Head)

- Bronze alloy or stainless steel hardware both UL listed approved for direct burial in earth and concrete
- Cast copper alloy body with hex head bolt provides simple trouble-free connection at low cost.



Catalog Number	Rod Size	Conductor Range	Sub & Master Pack	Wt. Per 100	NAED UPC No. 632591-
G-3	3/8"	4 Str. - 10 Sol.	100 / 800	6	70706-0
G-4** (Use G-5)	1/2"	2 Str. - 10 Sol.	100 / 800	9	70707-7
G-5**§	5/8"	2 Str. - 10 Sol.	50 / 400	10	70708-4
G-6*‡ (Use SRC)	3/4"	2 Str. - 10 Sol.	50 / 400	11	70709-1

Notes: *-These items UL and CSA Listed in US and Canada for direct burial in earth and concrete
**-These items UL Listed for direct burial in earth and concrete and RUS Listed
G-5 is listed for use as G-4 and G-5 and for copper and galvanized rods
‡-SRC is listed for use as G-4, G-5 and G-6
§- This item UL Listed for use on 1/2" and 5/8" copper-coated and galvanized rods, and #4 (1/2") rebar, buried in earth or concrete.

Budget Ground Rod Clamps (Hex-Head)

- Bronze alloy or stainless steel hardware approved for direct burial in earth and concrete
- Tin-Plated cast copper alloy body with hex head bolt provides simple trouble-free connection at low cost on galvanized ground rods.



Catalog Number	Rod Size	Conductor Range	Sub & Master Pack	Wt. Per 100	NAED UPC No. 632591-
G3P	3/8"	4 Str. - 10 Sol.	100 / 800	6	61135-0
G4P*	1/2"	2 Str. - 10 Sol.	100 / 800	9	61219-7
G5P*	5/8"	2 Str. - 10 Sol.	50 / 400	10	61220-3
G6P	3/4"	2 Str. - 10 Sol.	50 / 400	11	61221-0

Notes: * RUS Listed and marked per RUS specification and traceability.

Heavy-Duty Ground Rod Clamps (Hex-Head)

- Bronze alloy or stainless steel hardware both UL listed approved for direct burial in earth and concrete
- Ground connection is secured by long bearing surface of clamp on ground wire.
- High-strength corrosion-resistant copper alloy. All Heavy Duty clamps UL Listed for direct burial in earth and concrete.



Catalog Number	Rod Size	Conductor Range	Sub & Master Pack	Wt. Per 100	NAED UPC No. 632591-
JAB12H	1/2"	2 Str. - 10 Sol.	100 / 800	12	707152
JAB58H	5/8"	1/0 Str. - 8 Sol.	50 / 250	13	707169
JAB58HH*	5/8"	1/0 Str. - 8 Sol.	50 / 400	14	61311-8
JAB34H	3/4"	1/0 Str. - 8 Sol.	50 / 200	15	70717-6
JAB34HH	3/4"	3/0 Str. - 8 Sol.	50 / 200	17	
JAB1H	1"	4/0 Str. - 8 Sol.	50 / 400	25	70718-3

Notes: *-HH represents "Heavy duty hex head design screw 1/2" - 13 threads, CSA Listed
**-These items UL and CSA Listed
JAB58H Listed for US and Canada - 7/16 -14 threads



SECTIONAL GROUND ROD ACCESSORIES

Threadless Couplings for “Copper-Clad” Sectional Rods - Cast Bronze



Catalog Number	Rod Size	Pcs. Per Ctn.	Wt. Per 100	NAED UPC No. 632591-
50-TC	1/2"	25	22	61344-6
60-TC**	5/8"	25	25	70724-4
70-TC*	3/4"	10	40	61223-4

Notes: * UL and CSA Listed/For use with UL and/or CSA Listed copper-coated rods only.
 ** UL and RUS Listed/For use with UL Listed copper-coated rods only.

Threaded Couplings for “Copper-Clad” Sectional Rods - Cast Bronze



Catalog Number	Rod Size	Pcs. Per Ctn.	Wt. Per 100	NAED UPC No. 632591-
50-LC*	1/2" (9/16"-12)	25	17	70735-0
60-C**	5/8" (5/8"-11)	25	25	70720-6
70-C*	3/4" (3/4" - 10)	25	40	70721-3
80-C*	1" (1"-8)	25	100	70722-0

Notes: * UL and CSA Listed for US and Canada
 ** UL, RUS and CSA Listed
 Made from high-strength corrosion-resistant copper alloy, tapped for use on all standard threaded sectional rods.

Threadless Couplings for “Hot-Dip Galvanized” Rods - Plated Steel



Catalog Number	Rod Size	Pcs. Per Ctn.	Wt. Per 100	NAED UPC No. 632591-
GRC-54G ^a	5/8"	100	30	61134-3
GRC-625G ^o	5/8"	100	30	61132-9
GRC-34G*	3/4"	25	38	61133-6
GRC-34CP [†]	3/4"	25	38	
GRC-34GF	3/4"	25	38	
GRC-100F	1"	25	90	

Notes: * -For GR7510F ^a For GR6258 /UL Listed ^o For GR6258F [†] For GR7510
 F-Couplings CSA Listed for US and Canada

Threadless Couplings for “Stainless Steel” Rods (304 Stainless)



Catalog Number	Rod Size	Pcs. Per Ctn.	Wt. Per 100	NAED UPC No. 632591-
GRC-58SS	5/8"	25	30	70683-4
GRC-34SS	3/4"	25	38	70684-1
GRC-100SS	1"	25	90	

Notes: Listed by CSA for US and Canada

Threaded Couplings for “Stainless Steel” Rods (304 Stainless)



Catalog Number	Rod Size	Pcs. Per Ctn.	Wt. Per 100	NAED UPC No. 632591-
GRC-58SST	5/8" (5/8" - 11)	25	30	61122-0
GRC-34SST	3/4" (3/4" - 10)	25	38	61123-7
GRC-100SST	1" (1" - 8)	25	90	

Notes: Listed by CSA for US and Canada



Drive Studs for All Copper-Clad & Stainless Steel Rods



Catalog Number	Rod Size	Pcs. Per Ctn.	Wt. Per 100	NAED UPC No. 632591-
50-LDS	1/2" (9/16"-12)	10	16	70736-7
60-DS	5/8" (5/8"-11)	10	23	70728-2
70-DS	3/4" (3/4"-10)	10	35	70729-9
80-DS	1"(1"-8)	10	75	70730-5

Notes:

High strength steel driving studs for use with standard UL Listed threaded couplings.

Dual-rated Aluminum Ground Clamps

- For connecting ground conductor to steel or copper pipe or tubing.
- Tin plated for corrosion resistance.
- Dual-rated for copper or aluminum conductor.

Catalog Number	Pipe Size	Cond. Range	Pcs. Per Ctn.	Wt. Per 100	Dimensions			NAED UPC No. 632591-
					A	B	C	
GC1	1/2" - 1"	1/0-14	25	19	2.25	2.50	0.63	61132-9
GC21	1-1/4" - 2"	250-6	10	24	3.75	3.87	0.87	61133-6
GC41	2-1/2" - 4"	250-6	10	49	6.31	5.62	0.87	61134-3

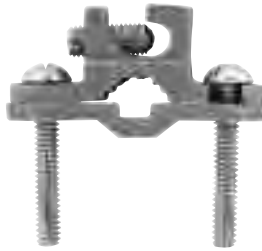




ALUMINUM AND COPPER PIPE CLAMPS

Direct Burial Ground Clamp

- Constructed from bronze alloy and stainless-steel screws for direct burial in earth and concrete.
- Lay-In feature simplifies routing of conductor during installation.
- Combines several pipe-type clamps into a single inventory item.
- UL Listed for "direct burial".
- Represents a cost-reduction for distributor and end-user alike.
- Ideal for pool & spa bonding.
- Constructed from bronze alloy and stainless steel screws for direct burial in earth and concrete



JRD  E198108

	Size	Conductor Range	Sub & Master Pack	Wt. Per 100	NAED UPC No. 632591-
Rebar Size	3/8" - 1"	10 Sol.-2 Str.	25/100	25	61327-9
Pipe Size	1/2" - 1"	10 Sol.-2 Str.	25/100	25	61327-9
Rod Size	1/2" - 1"	10 Sol.-2 Str.	25/100	25	61327-9

• One universal clamp for pipe, rebar, and ground rod.



JRD - 4/0  E198108

	Size	Wire Range	Sub & Master Pack	Wt. Per 100	NAED UPC No. 632591-
Rebar Size	3/8" - 1"	#8 Str. - 4/0 Str.	25/100	56	61327-9
Pipe Size	1/2" - 1"	#8 Str. - 4/0 Str.	25/100	56	61327-9
Rod Size	1/2"-3/4"	#8 Str. - 4/0 Str.	25/100	56	61327-9

Bolted Water Pipe Ground Clamps

All clamps except DCG are manufactured from high-strength corrosion-resistant copper alloy.



 E117523

Catalog Number	Pipe Size	Conductor Range	Sub & Master Pack	Wt. Per 100	NAED UPC No. 632591-
COPPER ALLOY, UL LISTED					
GC (GC-5)	1/2" - 1"	10 Sol.-2 Str.	25/100	21	70739-8
GC2	1-1/4" - 2"	10 Sol.-2 Str.	50	42	70741-1
G2124	2-1/2" - 4"	10 Sol.-2 Str.	10	105	61266-1
G4146	4-1/4" - 6"	10 Sol.-4 Str.	10	194	61226-5
UL LISTED, DIRECT BURIAL					
JD	1/2" - 1"	10 Sol. - 2 Str.	25/200	21	70758-9
JD2	1-1/4" - 2"	10 Sol.-2 Str.	50	48	61301-9
ZINC DIE CAST, UL LISTED					
DCG	1/2" - 1"	8 Sol.-2 Str.	25/250	15	70744-2
COPPER ALLOY, NON UL LISTED					
G4146	1/2" - 1"	10 Sol.-4 Str.	25/100	16	70740-4

Notes:

All clamps except DCG are manufactured from high-strength corrosion-resistant copper alloy

PIPE CLAMPS AND BONDING & GROUNDING CONNECTORS



Ground Clamps for Rigid Conduit With Copper Strap

- Used to connect grounding conductor in rigid conduit to water pipe for grounding.
- Copper strap allows flexibility during grounding and helps protect conduit system from the effects of vibrations in water system.
- Available with regular hub (H), or 360° swing hub (LH).
- Cast from high strength, highly conductive copper alloy.

Catalog Number	Pipe Size	Pcs. Per Ctn.	Wt. Per 100	Cond Size	Technical Data		NAED UPC No. 632591-
					Min Wire Sz.	Max Wire Sz.	
GC-11CSH-1	1/2" - 1"	50	49	1/2"	8 sol.	4 str.	61227-2
GC-11CSLH-1	1/2" - 1"	35	54	1/2"	10 sol.	6 str.	61228-9
GC-11CSH-2	1/2" - 1"	50	50	3/4"	8 sol.	4 str.	61229-6
GC-11CSLH-2	1/2" - 1"	30	58	3/4"	10 sol.	2/0 str.	61230-2
GC-11CSH-3	1/2" - 1"	50	54	1"	8 sol.	4 str.	61231-9
GC-11CSLH-3	1/2" - 1"	30	68	1"	10 sol.	3/0 str.	61232-6



E88878



Ground Clamps for Armored Cable

- Used to connect armored cable to water pipe for grounding.
- Special pressure bar grips armored cable insulation to decrease chances of grounding conductor being pulled out.
- Available with steel or bronze screws.
- Cast from high strength, highly conductive copper alloy.

With steel screws for direct burial

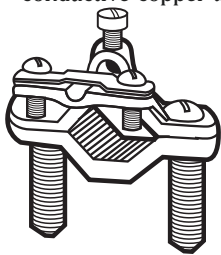
Catalog Number	Pipe Size	Pcs. Per Ctn.	Wt. Per 100	Technical Data		NAED UPC No. 632591-
				Min Wire Sz.	Max Wire Sz.	
GC-6	1/2" - 1"	25/250	27	8 sol.	4 str.	61233-3
GC-7	1-1/4" - 2"	25	48	8 sol.	4 str.	61235-7
GC-71 [§]	2-1/2" - 4"	10	146	8 sol.	4 str.	61236-4
GC-72 [§]	4-1/2" - 6"	10	192	8 sol.	4 str.	61237-1

With bronze screws for direct burial

Catalog Number	Pipe Size	Pcs. Per Ctn.	Wt. Per 100	Technical Data		NAED UPC No. 632591-
				Min Wire Sz.	Max Wire Sz.	
GC-6D	1/2" - 1"	25/250	28	8 Sol.	4 str.	61238-8

Notes:

[§]-UL Listed



E88878



Ground Clamps For Rigid Conduit

- Used to connect grounding conductor in rigid conduit to water pipe for grounding.
- Available with zinc plated screws.
- Cast from high strength, highly conductive copper alloy.

With steel screws for direct burial

Catalog Number	Pipe Size	Pcs. Per Ctn.	Wt. Per 100	Cond Size	Technical Data		NAED UPC No. 632591-
					Min Wire Sz.	Max Wire Sz.	
GC-61	1/2" - 1"	25	34	1/2"	8 Sol.	4 str.	61239-5
GC-62	1/2" - 1"	25	40	3/4"	8 Sol.	4 str.	61240-1
GC-63	1/2" - 1"	25	47	1"	8 Sol.	4 str.	61241-8
GC-66	1-1/4" - 2"	25	52	1/2"	8 Sol.	4 str.	61242-5
GC-67	1-1/4" - 2"	25	59	3/4"	8 Sol.	4 str.	61243-2
GC-68	1-1/4" - 2"	25	63	1"	8 Sol.	4 str.	61244-9



E88878





GROUND CLAMPS

Ground Clamps For Rigid Conduit with Swivel Hub

- Used to connect grounding conductor in rigid conduit to water pipe for grounding.
- Hub swings 360° for easy alignment.
- Assembled with zinc plated steel screws.
- Cast from high strength, highly conductive copper alloy.



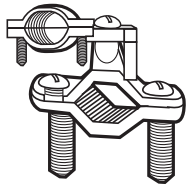
E88878



Catalog Number	Pipe Size	Pcs. Per Ctn.	Wt. Per 100	Cond Size	Technical Data		NAED UPC No. 632591-
					Min Wire Sz.	Max Wire Sz.	
GC-11LH-1	1/2" - 1"	25	41	1/2"	10 sol.	6 str.	61245-6
GC-11LH-2	1/2" - 1"	25	50	3/4"	10 sol.	2/0 str.	61246-3
GC-11LH-3	1/2" - 1"	25	55	1"	10 sol.	3/0 str.	61247-0
GC-22LH-1	1-1/4" - 2"	25	66	1/2"	10 sol.	6 str.	61248-7
GC-22LH-2	1-1/4" - 2"	25	69	3/4"	10 sol.	2/0 str.	61249-4
GC-22LH-3	1-1/4" - 2"	25	76	1"	10 sol.	3/0 str.	61250-0
GC-4LH-1	2-1/2" - 4"	10	124	1/2"	10 sol.	6 str.	61251-7
GC-4LH-2	2-1/2" - 4"	10	131	3/4"	10 sol.	2/0 str.	61252-4
GC-4LH-3	2-1/2" - 4"	10	133	1"	10 sol.	3/0 str.	61253-1

Ground Clamps For Rigid Conduit or EMT 360° Swivel Clamp

- Used to connect a grounding conductor in rigid conduit or EMT to water pipe for grounding.
- Pressure bar clamps conduit in place and swings 360° for easy alignment.
- Assembled with steel screws.
- Cast from high strength, highly conductive copper alloy.

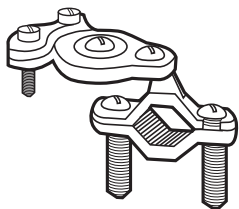


E88878



Catalog Number	Pipe Size	Pcs. Per Ctn.	Wt. Per 100	Cond Size	Technical Data		NAED UPC No. 632591-
					Min Wire Sz.	Max Wire Sz.	
GC-11JPT	1/2" - 1"	25	52	1/2", 3/4" EMT 1/2" Rigid	10 sol.	6 str.	61254-8
GC-22JPT	1-1/4" - 2"	25	68	1/2", 3/4" EMT 1/2" Rigid	10 sol.	6 str.	61255-5
GC-4JPT	2-1/2" - 4"	10	133	1/2", 3/4" EMT 1/2" Rigid	10 sol.	6 str.	61256-2

Ground Clamps for Armored Cable 360° Swivel Type



E88878

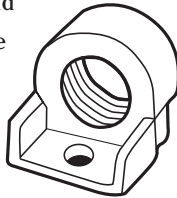


Catalog Number	Pipe Size	Pcs. Per Ctn.	Wt. Per 100	Technical Data		NAED UPC No. 632591-
				Min Wire Sz.	Max Wire Sz.	
GC-11JA	1/2" - 1"	25	41	10 sol.	6 str.	61257-9
GC-22JA	1-1/4" - 2"	25	66	10 sol.	6 str.	61258-6
GC-4JA	2-1/2" - 4"	10	122	10 sol.	6 str.	61259-3



Conduit Hubs

- Used with ground pipe clamp to connect rigid conduit to water pipe for grounding.
- 360° swing type hub provides flexibility in connection.
- Cast from high strength, highly conductive copper alloy.



Regular Type

Catalog Number	Conduit Size	Pcs. Per Ctn.	Wt. Per 100	Technical Data		NAED UPC No. 632591-
				Min Wire Sz.	Max Wire Sz.	
GH-1	1/2"	150	11	8 sol.	4 str.	61260-9
GH-2	3/4"	75	20	8 sol.	4 str.	61261-6
GH-3	1"	50	25	8 sol.	4 str.	61262-3



E88878



360° Swing Hub

Catalog Number	Conduit Size	Pcs. Per Ctn.	Wt. Per 100	Technical Data		NAED UPC No. 632591-
				Min Wire Sz.	Max Wire Sz.	
GLH-1	1/2"	50	20	10 sol.	6 str.	61263-0
GLH-2	3/4"	50	29	10 sol.	2/0 str.	61264-7
GLH-3	1"	25	31	10 sol.	3/0 str.	61265-4

Overhead Connectors – Hot Line Clamps

- Live line tool compatible
- Choose bronze alloy or aluminum alloy castings
- Easy installation
- Extended jaw for improved connection
- Corrosion resistant



Catalog Number	Body	Wire Combination	Conductor Range				Pcs. Per Ctn.	Wt. Per 100	NAED UPC No. 632591-
			Main ACSR	Main AWG	Tap ACSR	Tap AWG			
CC1520*	Bronze	Copper to Copper	–	2/0–8	–	2/0–8	50	70	613477
CC1520P	Plated Bronze	General Purpose	–	2/0–8	2/0–6	2/0–8	50	70	613484
CC1520A9	Aluminum	Aluminum to Aluminum	2/0–6	2/0–8	2/0–6	2/0–8	50	35	613491
CC1520AP9	Aluminum	General Purpose	2/0–6	2/0–8	2/0–6	2/0–8	50	35	613507
CC1530	Bronze	Copper to Copper	–	400–6 sol.	–	4/0–6 sol.	50	130	613514
CC1530P	Plated Bronze	General Purpose	–	400–6	3/0–6	4/0–6 sol.	50	135	613521
CC1530A	Aluminum	Aluminum to Aluminum	397.4–6	400–6	3/0–6	4/0–6 sol.	50	70	613538
CC1530AP9	Aluminum	General Purpose (Bagged with Inhibitor)	397.4–6	400–6	3/0–6	4/0–6 sol.	50	75	613545



Catalog Number	Conductor Range Tap/Main	Pcs. Per Ctn.	Wt. Per 100	NAED UPC No. 632591-
H1	6-14 Sol.	100	8	70754-1
H2	1/0 Str. - 8 Sol.	100	14	70755-8
VC5006SH*	#8 Sol. - #6 Sol.Cu	100	9	70750-3
VC5006SH-P*	#8 Sol. - #6 Sol.Cu	100	9	71506-5
VC-4	#8 Sol. - #4 Sol.Cu	50	15	70751-0
VC-2	#6 Sol. - #2 Sol.Cu	50	18	70752-7
VC-2S	#5 Sol. - #2 Str.Cu	50	18	613552
VC-20	#4 Sol. - 1/0 Str.Cu	50	25	613569
VC-20S	#3 Sol. - 2/0 Str.Cu	20	36	613576
VC-40	#1 Sol. - 4/0 Str.Cu	10	41	613583

* P = Platted

* SH= Slotted-Head Bolt

Copper Ground Plates

- Made of solid 0.025" sheet copper
- Grounding lead connector of high-strength copper-aluminum alloy
- Less costly, more efficient than butt wrapping poles

Catalog Number	Size	Conductor Range	Pcs. Per Ctn.	Wt. Per 100	NAED UPC No. 632591-
GP100	7.5" dia.	#14-#4 AWG	40	15	613590
PBGW	7x7 5/8	2/0 STR - 10 Sol.	40	15	613606
PBH	7x7 3/8	4 STR - 14 Sol.	40	15	613613



Type GP
[round]

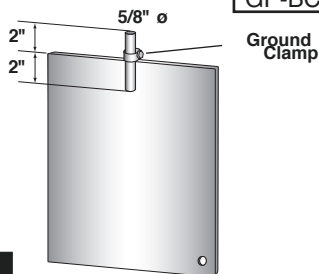


Type PB
[square]

Steel Ground Plates

- Made of solid 0.25" steel
- Galvanized or bare steel
- Can ground as efficiently as two rods
- For burial at least 24" below grade (CEC Rule 10-702)

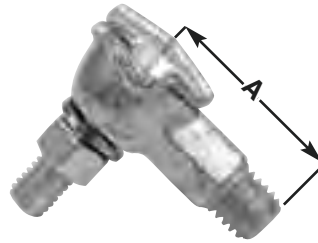
Catalog Number	Description	Dimensions	Pcs. Per Ctn.	Wt. Per 100	NAED UPC No. 632591-
GP-G	Galvanized Steel w/o connector	1/4"x10"x16"	4	1100	613620
GP-GC	Galvanized Steel with connector	1/4"x10"x16"	4	1150	613637
GP-B	Bare Steel w/o connector	1/4"x10"x16"	4	1100	613644
GP-BC	Bare Steel with connector	1/4"x10"x16"	4	1150	613651





Type TTC Transformer Tank Ground Connectors

- High-conductivity bronze
- 1/2" - 13 stud fits all standard EEL-NEMA distribution transformers
- Accommodates cable in either horizontal or vertical direction
- P suffix indicates tin plated connector



Catalog Number	Conductor Range	Stud Thread Size	Dimensions			Pcs. Per Ctn.	Wt. Per 100	NAED UPC No. 632591-
			A	B	C			
TTC-2	2/0 Str. to 8 Sol.	1/2--13	1-51/64	1-9/64	1-21/64	100	22	613668
TTC-3	1 Str. to 10 Sol.	1/2--13	1-3/8	1-3/64	1-9/16	100	20	613675
TTC-4	1 Str. to 10 Sol.	1/2--13	1-1/4	7/8	1-3/8	100	16	613682
TTC-2P	2/0 Str. to 8 Sol.	1/2--13	1-51/64	1-9/64	1-21/64	100	22	613699
TTC-3P	1 Str. to 10 Sol.	1/2--13	1-3/8	1-3/64	1-9/16	100	20	613705
TTC-4P	1 Str. to 10 Sol.	1/2--13	1-1/4	7/8	1-3/8	100	16	613712

Type GC Transformer Ground Connectors



Catalog Number	Conductor Range	Stud Thread Size	Bolt	Pcs. Per Ctn.	Wt. Per 100	NAED UPC No. 632591-
GC207	8 Sol. to 1/0 Str.	1/2-13-UNC-2/4	9/16" Hex	25	10	613729



Parallel Groove Clamps

Type PAA One- And Two-Bolt Aluminum

- Made of high-strength aluminum alloy
- Galvanized bolt, nut and lockwasher
- Order prefilled with oxide inhibitor for bi-metallic use



Catalog Number Standard	Prefilled	Bolts	Conductor Range				Pcs. Per Ctn.	Wt. Per 100	NAED UPC No. 632591-
			ASR		Al or Cu				
			Main	Tap	Main	Tap			
	PAA 29	1	2--6	2--6	2 Str. -- 6 Sol.	2 Str. -- 6 Sol.	50	18	614023
	PAA 339	1	1/0--6	1/0--6	1/0 Str. -- 6 Sol.	1/0 Str. -- 6 Sol.			614030
PAA 4	PAA 49	1	1/0--6	1/0--6	1/0 Str. -- 6 Sol.	1/0 Str. -- 6 Sol.	50	18	613736
PAA 5	PAA 59	1	1/0--8	1/0--8	1/0 Str. -- 8 Sol.	1/0 Str. -- 8 Sol.	50	20	613743
PAA 6	PAA 69	1	1/0--8	1/0--8	2/0 Str. -- 6 Sol.	2/0 Str. -- 8 Sol.	50	22	613750
PAA 10	PAA 109	2	336.4--1/0 1/0 -- 6 AR	1/0--8	400--1/0 Str. 1/0 -- 6 AR	1/0Str. -- 8 Sol.	25	25	613767
PAA 12	PAA 129	2	4/0--2	4/0--2	4/0 Str. -- 2 Sol.	4/0 Str. -- 2 Sol.	20	29	613774
PAA 400	PAA 4009	2	336.4--1/0 1/0 -- 6 AR	336.4--1/0	400--1/0 Str. 1/0 -- 6 AR	400--1/0 Str.	20	120	613781

Type PAC Aluminum With Copper Liner

- Corrosion resistant design and construction
- No assembly required
- Cast aluminum body surrounds copper liner, sealing out moisture



Catalog Number Standard	Conductor Range			Pcs. Per Ctn.	Wt. Per 100	NAED UPC No. 632591-
	Main		Tap			
	ACSR	Aluminum	Copper			
PAC 345	1/0--8	1/0 Sol.--8 Str.	1/0 Sol.--8 Str.	50	23	613804
PAC 7	336.4--1/0	400--2/0 1/0 -- 6 AR	1/0--8 Sol. 1/0 -- 6 AR	25	23	613798

Note: Add suffix "9" for prefilled with inhibitor

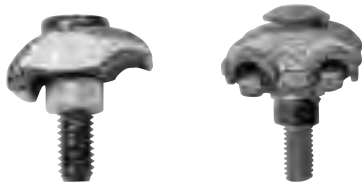


Type GTC Tower Ground Clamps

- One- and two-piece designs available
- High-strength copper alloy construction
- Corrosion resistant

Catalog Number	Conductor Range	Channel Thickness*	Construction	Pcs. Per Ctn.	Wt. Per 100	NAED UPC No. 632591-
GTC13	2/0 Str. -- 4 Sol.	1/4"	1-piece	25	21	613811
GTC14	250 KCMIL. -- 2/0 Str.	1/4"	1-piece	25	42	613828
GTC23	2/0 Str. -- 4 Sol.	1/4"	2-piece	25	26	613835
GTC24	250 KCMIL. -- 2/0 Str.	1/4"	2-piece	25	44	613842

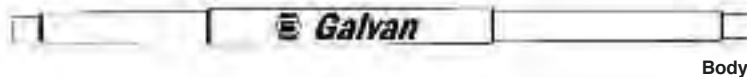
*Add suffix "L" to Catalog Number for 1/2" thickness



Ground Rod Driver

- Made in the U.S.A.
- High-quality materials, design and construction
- For 5/8" or 3/4" rods
- Drives flush or below grade
- No ladder, no kneeling
- Safer than hammers
- No mushrooming of rods
- Also drives rebar
- BEST OF ALL -- cost effective enough to have one on every truck in your fleet!

Catalog Number	Description	Maximum Rod Diameter (in.)	Pcs. Per Ctn.	Wt. (lbs.)	NAED UPC No. 632591-
GRD58	Ground rod driver body with 5/8" diameter insert	.63	1	25	613859
GRD34	Ground rod driver body with 3/4" diameter insert	.75	1	25	613866
GRDI58	5/8" diameter insert (replacement)	.63	1	4	613873
GRDI34	3/4" diameter insert (replacement)	.75	1	4	613880
CR	cable retainer (replacement)	-NA-	1	-	613897



Body



Insert



Retainer



Type DGC Drive-On Ground Clamp



Catalog Number	Ground Rod Size	Pieces/ Cartons	Ground Wire Size	NAED UPC No. 632591-
DGC-5844	5/8 (0.555 - 0.565)	25	1 or 2 - #4 Sol.	61329-3
DGC-5866	5/8 (0.555 - 0.565)	25	1 or 2 - #6 Sol.	61330-9

- For use on all 5/8" diameter UL Listed copper-coated ground rods.
- Used to bond one or two, #4 or #6, solid copper conductors respectively.
- Produced from high-strength copper alloy, the same material as UL Listed "acorn" type ground rod clamps.
- May be used effectively for direct-burial applications.
- To install, the only required tool is a hammer. Compression forces maximize the "direct" surface-to-surface copper contact between conductor and ground rod electrode.
- A drive-head should be used during installation of the ground rod electrode into the soil, thus minimizing any possible mushrooming or deformation on the drive (or chamfer) end of the rod. This will improve ease of installation of the drive-on clamp.
- This design places the grounding conductor in "direct" contact with the ground rod, thereby eliminating multiple paths for the current to follow, which could contribute to increased resistance.

To Install:

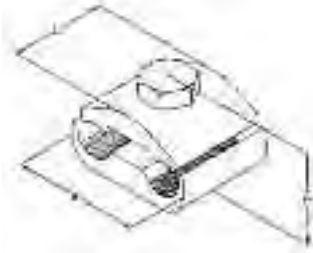
- Select the proper connector from the above chart.
- Drive the ground rod electrode to the proper depth per national or local code recommendations.
- Position connector and ground rod conductors as shown in middle illustration.
- Drive connector onto rod until top of connector is flush with top of ground rod as shown in adjacent illustration. Galvan suggests using a 20-ounce hammer.



Type APC Dual-Rated Extruded Aluminum Parallel Groove Connectors

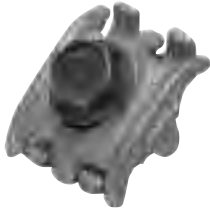
- Extruded parallel groove clamps for use on aluminum to aluminum or aluminum to copper connectors with Oxide Inhibitor.
- Tin plating (-P) or wax dip (-6) must be specified for non-Oxide Inhibitor filled connectors.
- Standard clamp is supplied with contacts and galvanized steel hardware.
- All connectors can be installed with live line tools.

Catalog Number	Conductor Range		Pcs. Per Ctn.	Wt. Per 100	Dimensions (in.)			NAED UPC No. 632591-
	Main	Tap			A	B	C	
APC-2/0	2/0-6	2/0-2	50	20.3	1.37	1.61	2.00	70911-8
APC-4/0	4/0-2	4/0-2	25	26.3	1.37	2.00	2.00	70912-5



Bonding and Grounding Connectors

- Designed for easy installation, high conductivity and long life.
- Install with wrench (hex head) or pliers (square).



E117523

Catalog Number	Galv Steel Strand	Copper Tap	Pcs. Per Ctn.	Wt. Per 100	NAED UPC No. 632591-	Finish Description
K1**	1/4"-7/16"	#8 sol.- 2/0	100	16	70746-6	Fully Plated/Tap-Grooved
K2	1/4"-7/16"	#8 sol.- 2/0	100	16	70747-3	Fully Plated
K3	1/4"-7/16"	#8 sol.- 2/0	100	16	70748-0	Not Plated
KUL*	1/4"-7/16"	#8 sol.- 2/0	100	16	70749-7	Fully Plated

*Denotes UL Listed, ** RUS Listed



BONDING AND GROUNDING CONNECTORS

Type TGC Beam Grounding Clamp

- Designed for grounding CATV and telecommunication installations.
- Connects solid copper conductors (#6 - #14) to permanently grounded metal frames.
- Square or hex-head bolt
- Ground wire access from four directions
- High-strength copper alloy body
- High-strength anchoring bolt
- UL 467 Listed



E117523

Catalog Number	Description	Conductor Range	Pcs. Per Ctn.	Wt. Per 100	NAED UPC No. 632591-
TGC	Square Head Steel Bolt	#6 - #14 solid	100	35	613903
TGC-H	Hex Head Steel Bolt	#6-#14 solid	25	9	613910

Figure 8 Cable Connector



Catalog Number	Conductor Range	Pcs. Per Ctn.	Wt. Per 100	NAED UPC No. 632591-
CC167P	.146-.312 cable to .146-.312 tap	50	23	70753-4

Notes:

Teeth puncture insulation during tightening for a positive ground without skinning conductor.

Kenny Clamp UL-Listed Connector

Galvan Kenny Clamps are your best choice to ensure that grounding electrode conductor installations are code compliant. The Kenny Clamp is UL-Listed for the bonding and grounding of electrode connectors in panel boards, pad mounts, dry-type transformers, metallic raceways and enclosures. Simply install Galvan's Kenny Clamp through a 1/2-inch knockout with paint removed, tighten the steel locknut, insert the grounding electrode through the clamp and tighten the compression nut. Your installation is now NEC Code compliant. The Kenny Clamp saves time and money compared to current non-compliant alternatives.

Kenny Clamp

- Eliminates potential for a choke at the hole
- Meets UL 467 for bonding/grounding
- Meets UL 486A for connectors
- Complies with NEC 110.3(B) and 250.8 (using listed grounding or bonding connector for proper application)
- Complies with NEC 250.64(E) (entering and exiting metallic raceways and enclosures)



E225971

Catalog Number	Conductor Range	Pcs. Per Ctn.	Wt. Per 100	NAED UPC No. 632591-
KCCA-8 sol	#8 solid	10	125	613927
KCCA-8 str	#8 stranded	10	125	613934
KCCA-6 sol	#6 solid	10	125	613941
KCCA-6 str	#6 stranded	10	125	613958
KCCA-4 sol	#4 solid	10	125	613965
KCCA-4 str	#4 stranded	10	125	613972
KCCA-2 str	#2 stranded	10	125	613989
KCCA-1/0	1/0	10	125	613996
KCCA-2/0	2/0	10	125	614009
KCCA-3/0	3/0	10	125	614016

INSULATION PIERCING CONNECTORS



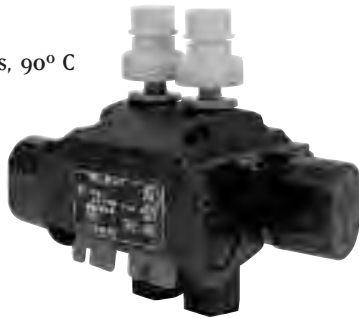
Galvan IPC Series connectors are an easy fit in copper-to-copper, copper-to-aluminum and aluminum-to-aluminum applications. Designed for splice or tap use, these units are not recommended for use with extra-flexible cables. The connectors are fully insulated and safe to install without special tools. IPC connectors eliminate time spent on wire stripping, taping and covers.

Insulation Piercing Connectors-IPC

- Wire range: #14 AWG to 750 MCM
- Versatile and reliable
- Use only with insulated conductors
- Installs without tape, stripping or cover
- Easy one-person installation
- UL 486B listed
- Rated: 600 volts, 90° C



E155274



Catalog Number	Conductor Range		No. Of Bolts	Pieces Per Carton	Weight Per 100
	Main AWG	Tap AWG			
IPC-1/0-2*	1/0-8	2-10	1	6	30
IPC-1/0-1/0	1/0-8	1/0-8	1	6	30
IPC-2/0-10	2/0-4	10-14	1	6	23
IPC-4/0-2	4/0-3	2-10	1	6	26
IPC-4/0-2/0	4/0-2	2/0-6	1	4	41
IPC-4/0-4/0	4/0-2	4/0-4	1	4	43
IPC-350-350	350-1/0	350-1/0	2	2	111
IPC-500-4/0	500-2/0	4/0-4	2	2	116
IPC-500-350*	500-4/0	350-1/0	2	2	111
IPC-750-10	750-3/0	10-14	1	6	35
IPC-750-500	750-250	500-250	2	2	166



SPLIT BOLTS

Type 'K' Copper Split Bolts

- For copper to copper connections.
- Bolt and nut of high strength corrosion resistant bronze alloy.
- Tested and listed to UL 486A requirements.



Catalog Number	Range of Equal Main & Tap Conductors	Pcs. Per Ctn.	Wt. Per 100	Min Tap With One Max. Main	NAED UPC No. 632591-
K-10	10 Str. - 12 Sol.	100	2	14 Sol.	71322-1
K-8	8 Str. - 10 Sol.	100	3	14 Sol.	71335-1
K-6*	6 Sol. - 8 Sol.	100	5.5	14 Sol.	71333-7
K-4	4 Sol. - 8 Sol.	100	7	14 Sol.	71330-6
K-1	2 Str. - 6 Sol.	100	15	14 Sol.	71320-7
K-1/0	1/0 Str. - 4 Sol.	50	19	14 Sol.	71321-4
K-2/0	2/0 Str. - 2 Sol.	25	30	14 Sol.	71325-2
K-3/0	3/0 Str. - 2 Sol.	25	34	14 Sol.	71328-3
K-250	250 Kcmil. - 1 Str.	10	35	8 Sol.	71326-9
K-350	350 - 250 Kcmil.	3	77	1/0 Str.	71329-0
K-500	500 - 400 Kcmil.	3	90	2/0 Str.	71332-0
K-750	750 - 600 Kcmil.	1	195	4/0 Str.	71334-4
K-1000	1000 - 800 Kcmil	1	280	4/0 Str.	71323-8

Notes:

*RUS Listed

UL Listed and CSA Certified for COPPER conductor only.

Three Wire Split Bolts

Catalog Number	Range of Equal Main & Tap Conductors	Pcs. Per Ctn.	Wt. Per 100	Min Tap With One Max. Main	NAED UPC No. 632591-
K-2/3	#6 Sol. - 2 Solid	100	10.0	14 Sol.	61318-7
K-4/3	#8 Sol. - 4 Solid	100	7.5	14 Sol.	61319-4
K-6/3	#8 Sol. - 6 Solid	100	6.0	14 Sol.	61320-0

Type 'S' Copper Split Bolts - Tin Plated with Spacer

- For use on copper, aluminum, and ACSR conductors.
- Bolt and pressure bar of copper alloy completely tin plated.
- Oxide inhibitor recommended when used on aluminum conductor.
- Tin plated, high strength copper alloy split bolt with spacer separates dissimilar conductors which allow you to connect: copper to copper; copper to aluminum; aluminum to aluminum.



Copper only



Catalog Number	Range of Equal Main & Tap Conductors	Pcs. Per Ctn.	Wt. Per 100	Min Tap With One Max. Main	NAED UPC No. 632591-
S-6	6 Sol. - 12 Sol.	100	8	12 Sol.	71518-8
S-4	4 Sol. - 10 Sol.	50	11	12 Sol.	71515-7
S-2	2 Sol. - 8 Sol.	50	15	8 Sol.	71510-2
S-1	1 Str. - 8 Sol.	50	18	8 Sol.	71507-2
S-1/0	1/0 Str. - 6 Sol.	50	26	6 Sol.	71508-9
S-2/0	2/0 Str. - 6 Str.	25	39	6 Sol.	71511-9
S-3/0	3/0 Str. - 4 Sol.	25	45	4 Sol.	71513-3
S-250	250 Kcmil. - 2/0 Str.	25	59	4 Sol.	61285-2
S-350	350 Kcmil. - 1/0 Str.	12	86	2 Sol.	71514-0
S-500	500 Kcmil. - 1/0 Str.	12	105	1/0 Str.	71517-1
S-750	750 Kcmil. - 4/0 Str.	1	198	2/0 Str.	71519-5
S-1000	1000 - 500 Kcmil.	1	309	4/0 Str.	71509-6



Dual-Rated Aluminum Split Bolt Connectors

For aluminum to aluminum, copper to aluminum and copper to copper

- GALVAN aluminum split bolts made from high strength heat treated aluminum alloy that is highly resistant to corrosion.
- The design provides, under torque, high contact pressure between conductors.
- Electro-tin plated copper alloy bolt, nut, spacer, and pressure bar.
- Meets requirements of the UL486B Standard.

Catalog Number	Range of Equal Main & Tap Conductors	Pcs. Per Ctn.	Wt. Per 100	Min. Tap With One Max. Main	NAED UPC No. 632591-
A-6	6 Str. - 10 Str.	100	6	10 Sol.	70860-9
A-4	4 Str. - 10 Str.	100	6	10 Sol.	70857-9
A-2	2 Str. - 8 Str.	100	9	8 Sol.	70853-1
A-1/0	1/0-4 Str.	50	11	4 Sol.	70852-4
A-2/0	2/0-4 Str.	25	17	4 Sol.	70854-8
A-4/0	4/0-2 Str.	12	25	2 Sol.	70858-6
A-350	350 Kcmil - 2/0 Str.	3	45	2 Str.	70856-2
A-500	500 Kcmil - 3/0 Str.	1	60	2 Str.	70859-3





GENERAL PURPOSE MECHANICAL CONNECTORS

Dual-Rated Solderless Connectors

For use with both aluminum and copper conductors

- GALVAN aluminum dual-rated connectors are manufactured from high strength 6061-T6 aluminum alloy to insure both maximum strength and conductivity.
- They are dual-rated for both copper and aluminum conductors and are electro-tin plated to provide low contact resistance and protection against corrosion.
- Assembly can be made with only a screwdriver or allen wrench and the connectors are re-useable.



Fig. 1

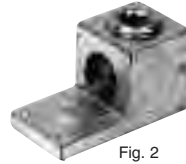


Fig. 2



Fig. 3



Fig. 4



E26130



Catalog Number	Discontinued Catalog Number	Fig. No.	Cond. Range	Pcs. Per Ctn.	Wt. Per 100	Dimensions				NAED UPC No. 632591-
						A	B	C	D	
LA-6	AB-50	1	6-14	100	1.5	1.06	0.50	0.50	0.27	71403-7
LA-2	AB-70	1	2-14	100	2	1.06	0.50	0.56	0.27	71393-1
LA-1/0	AB-112	1	1/0-14	50	4	1.47	0.63	0.78	0.27	71386-3
LA-2/0	AB-125	1	2/0-14	50	5	1.47	0.63	0.78	0.27	71394-8
LA-250	AB-250	2	250-6	25	14	2.00	1.00	1.13	0.33	71395-5
LA-300	AB-300	2	300-6	25	14	2.00	1.00	1.13	0.33	71397-9
LA-350	AB-350	2	350-6	25	20	2.25	1.13	1.25	0.41	71399-3
LA-500	AB-500	2	500-4	12	39	2.82	1.50	1.56	0.41	71402-0
LA-600	AB-600	2	600-2	12	45	2.82	1.50	1.56	0.41	71406-8
LA-800	-	2	800-300	3	55	3.50	1.75	1.94	0.66	71408-2
LA-1000	AB-1000	2	1000-500	3	65	3.50	1.75	1.94	0.66	71610-9
L1M2-350*	A1B2-350	3	350-6	6	25	4.25	1.25	1.38	0.53	71341-2
L1M2-600*	A1B2-600	3	600-2	3	50	4.69	1.50	1.50	0.53	71342-9
L1D2-350*	A1B2-350-2	4	350-6	3	35	5.31	1.50	1.50	0.53	71338-2
L1D2-600*	A1B2-600-2	4	600-2	3	50	5.31	1.50	1.50	0.53	71339-9
L1D2-800*	-	4	800-300	3	100	6.18	1.88	1.88	0.53	71340-5
L1D2-1000*	A1B2-1000-2	4	1000-500	3	105	6.18	1.88	1.88	0.53	71336-8

Notes:

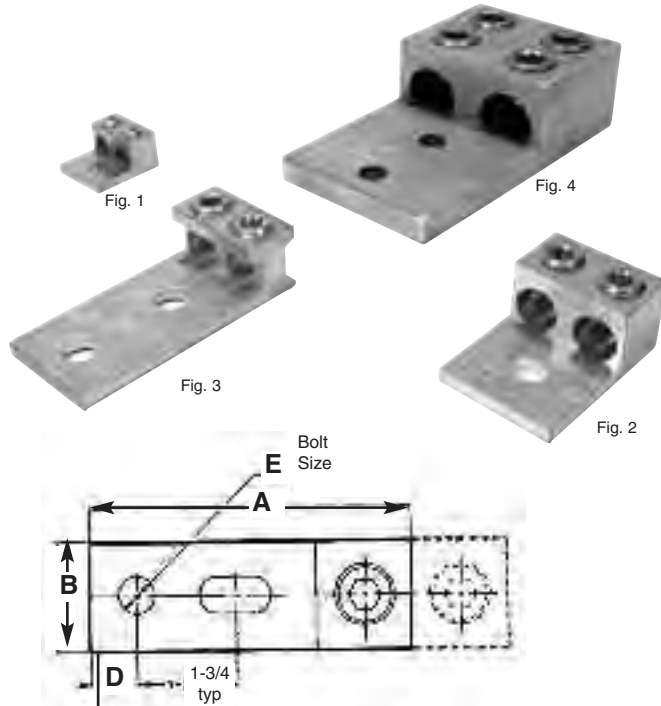
*NEMA Hole Spacing of 1.75"



Dual-Rated Solderless Connectors

For use with both aluminum and copper conductors

- GALVAN aluminum dual-rated connectors are manufactured from high strength 6061-T6 aluminum alloy to insure both maximum strength and conductivity.
- They are dual-rated for both copper and aluminum conductors and are electro-tin plated to provide low contact resistance and protection against corrosion.
- Assembly can be made with only a screwdriver or allen wrench and the connectors are re-useable.



E26130



Catalog Number	Discontinued Catalog Number	Fig. No.	Cond. Range	Pcs. Per Ctn.	Wt. Per 100	Dimensions					NAED UPC No. 632591-
						A	B	C	D	E	
DLA-1/0	DLA-112	1	1/0-14	12	8	1.47	1.13	0.78	0.28	0.27	71246-0
DLA-2/0	DLA-125	1	2/0-14	12	9	1.47	1.25	0.79	0.28	0.27	71248-4
DLA-250	2AB-250	2	250-6	6	25	2.56	1.63	1.19	0.41	0.41	71249-1
DLA-350	2AB-350	2	350-6	6	30	2.88	1.94	1.25	0.56	0.53	71250-7
DLA-600	2AB-600	2	600-2	3	50	3.19	2.41	1.56	0.56	0.53	71251-4
DLA-800	-	2	800-300	3	110	3.50	3.50	1.94	0.56	0.66	71252-1
DLA-1000	2AB-1000	2	1000-500	3	110	3.50	3.50	1.94	0.56	0.66	71245-3
L2M2-350	2AB2-350	3	350-6	3	50	4.25	1.92	1.18	0.63	0.56	71347-4
L2M2-500	2AB2-500	3	600-2	3	97	4.59	2.40	1.56	0.63	0.56	61269-2
L2M2-600	2AB2-600	3	600-2	3	97	4.59	2.40	1.56	0.63	0.56	61270-8
L2M2-1000	2AB2-1000	3	1000-500	3	134	4.94	3.50	1.94	0.63	0.66	61272-2
L2D2-350*	A2B2-350	4	350-6	3	85	4.25	2.31	1.38	0.56	0.56	71344-3
L2D2-600*	A2B2-600	4	600-2	3	134	5.31	2.75	1.50	0.56	0.56	71345-0
L2D2-800*	-	4	800-300	3	200	6.19	3.50	1.88	0.56	0.56	71346-7
L2D2-1000*	-	4	1000-500	3	210	6.19	3.50	1.88	0.56	0.56	71343-6

Notes:

*NEMA Hole Spacing of 1.75" center except SG-250 which has 1.00" center.

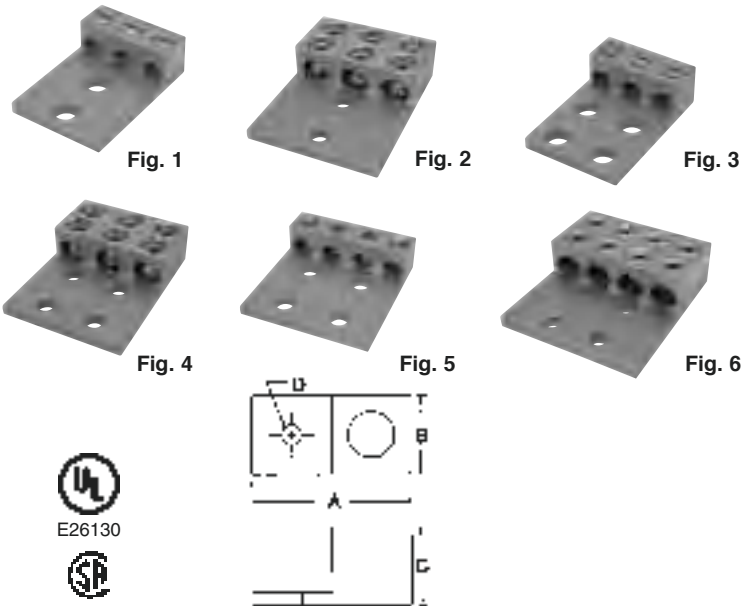


GENERAL PURPOSE MECHANICAL CONNECTORS

Dual-Rated Solderless Connectors

For use with both aluminum and copper conductors

- GALVAN aluminum dual-rated connectors are manufactured from high strength 6061-T6 aluminum alloy to insure both maximum strength and conductivity.
- They are dual-rated for both copper and aluminum conductors and are electro-tin plated to provide low contact resistance and protection against corrosion.
- Assembly can be made with only a screwdriver or allen wrench and the connectors are re-useable.



Catalog Number	Discontinued Catalog Number	Fig. No.	Cond. Range	Pcs. Per Ctn.	Wt. Per 100	Dimensions				NAED UPC No. 632591-
						A	B	C	D	
L3M2-1/0	3AB2-112	1	1/0-14	6	27	2.91	2.00	0.88	0.53	71354-2
L3M2-3/0	-	1	3/0-6	3	36	4.00	2.81	1.19	0.53	71356-6
L3M2-250	3AB2-250	1	250-6	3	52	4.00	3.00	1.19	0.53	71355-9
L3M2-350	3AB2-350	1	350-6	1	68	4.25	3.50	1.38	0.53	71357-3
L3M2-500	3AB2-500	1	500-4	1	127	4.25	3.75	1.53	0.53	71358-0
L3D2-600	A3B2-600	2	600-2	1	201	5.31	3.88	1.50	0.53	71349-8
L3D2-800	-	2	800-300	1	211	6.19	4.94	1.88	0.53	71350-4
L3D2-1000	-	2	1000-350	1	312	6.19	5.19	1.88	0.53	71348-1
L3M4-1/0	-	3	1/0-14	6	27	2.59	2.00	0.88	0.53	71359-7
L3M4-3/0	-	3	3/0-6	6	36	4.00	2.81	1.19	0.53	71362-7
L3M4-250	3AB4-250	3	250-6	3	50	4.00	3.00	1.19	0.53	71361-0
L3M4-350	3AB4-350	3	350-6	1	68	4.25	3.50	1.38	0.53	71363-4
L3M4-500	3AB4-500	3	500-4	1	110	4.25	3.75	1.53	0.53	71364-1
L3D4-600	A3B4-600	4	600-2	1	201	5.31	3.88	1.50	0.53	71352-8
L3D4-800	-	4	800-300	1	211	6.19	4.94	1.88	0.53	71353-5
L3D4-1000	A3B4-1000	4	1000-500	1	309	6.19	5.31	1.88	0.53	71351-1
L4M4-250	4AB4-250	5	250-6	1	67	4.00	4.06	1.19	0.53	71372-6
L4M4-350	4AB4-350	5	350-6	1	91	4.25	4.75	1.38	0.53	71373-3
L4M4-500	-	5	500-4	1	268	4.25	5.00	1.53	0.53	-
L4D4-600	A4B4-600	6	600-2	1	281	6.19	5.28	1.50	0.53	71366-5
L4D4-800	-	6	800-300	1	284	6.19	6.63	1.88	0.53	71367-2
L4D4-1000	A4B4-1000	6	1000-500	1	412	6.19	7.16	1.88	0.53	71365-8

Notes:

*NEMA Drilling 1 3/4" centers



Type "SR" Aluminum Splicers/Reducers

Dual-Rated Solderless Connectors

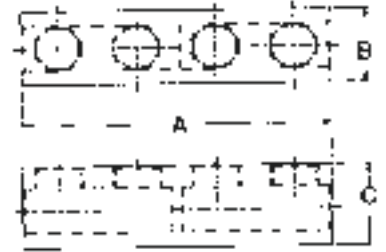
- For splicing copper to copper, copper to aluminum, and aluminum to aluminum conductors
- Solid center barrier wall prevents contact between conductors



Fig. 1



Fig. 2



E26130



Catalog Number	Fig. No.	Cond. Range	Pcs. Per Ctn.	Wt. Per 100	Dimensions			NAED UPC No. 632591-
					A	B	C	
SR-2	1	14-2	10	10	1.38	0.50	0.56	71579-9
SR-0	1	14-1/0	10	12	1.91	0.75	0.75	71577-5
SR-250	2	250-6	10	47	3.94	1.00	1.13	71580-5
SR-350	2	350-6	10	50	4.19	1.13	1.19	71582-9
SR-500	2	500-3/0	3	64	5.00	1.38	1.50	71583-6
SR-750	2	750-250	2	90	6.25	1.63	1.75	71584-3

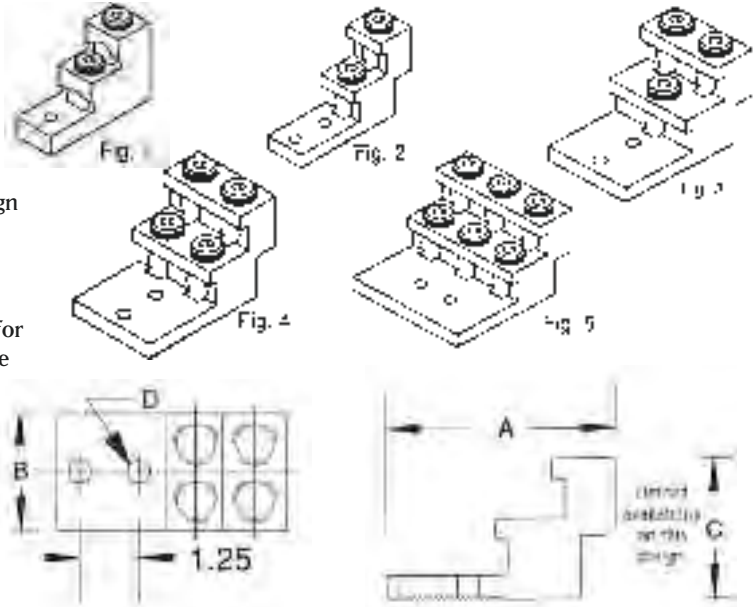


Aluminum Dual-Rated Solderless Connectors

For use with both aluminum and copper conductors

GALVAN aluminum dual-rated solderless connectors are manufactured from high strength 6061-T6 aluminum alloy to insure both maximum strength and conductivity.

- The screws used to clamp the conductors are designed to extend beyond the barrel sides of the connector to allow a better, more secure compression of the conductor. This design spreads the conductor strands to help dissipate heat, and improve its pull out safety features and capabilities.
- The design of the wire way provides optimum transfer of current, creating a straight line flow through the connector for the least possible path of electrical resistance, plus a positive wire stop is provided.



Catalog Number	Discontinued Catalog Number	Fig. No.	Cond. Range	Pcs. Per Ctn.	Wt. Per 100	Dimensions				NAED UPC No. 632591-
						A	B	C	D	
PV2-300		1	300-6	3	30	3.00	1.00	2.00	0.31	71496-9
2ABV-500	PV2-500	2	500-4	2	90	4.90	1.50	3.00	0.41	71497-6
2ABV-600	PV2-600	2	600-2	2	90	4.90	1.50	3.00	0.41	71498-3
2ABV-750	PV2-750	2	750-1/0	2	90	4.90	1.56	3.00	0.41	71499-0
3ABV-500	PV3-500*	3	500-4	2	150	4.90	2.50	3.00	0.41	71500-3
3ABV-600	PV3-600	3	600-2	2	150	4.90	2.50	3.00	0.41	71501-0
3ABV-750	PV3-750	3	750-1/0	2	150	4.90	2.84	3.00	0.41	71502-7
4ABV-500	PV4-500	4	500-4	2	159	4.90	2.50	3.00	0.41	71503-4
4ABV-600	PV4-600	4	600-2	2	159	4.90	2.50	3.00	0.41	71504-1
4ABV-750	PV4-750	4	750-1/0	2	159	4.90	2.84	3.00	0.41	71505-8
6ABV-500	PV6-500	5	500-4	2	205	4.90	3.94	3.00	0.41	61201-2
6ABV-750	PV6-750	5	750-4	2	205	4.90	3.94	3.00	0.41	71506-5



LI-Ground Clamps: Dual-Rated Solderless Connectors

- For use with both aluminum and copper conductors
- Designed for use on conduit grounding bushings.
- Open faced design allows installer to quickly lay-in the grounding conductor as a jumper to multiple conduits with no break in ground conductor.
- Not approved for direct burial.

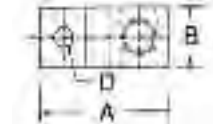
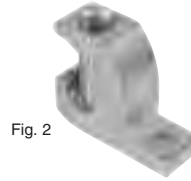


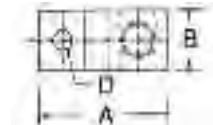
Fig. 2



Catalog Number	Fig. No.	Cond. Range	Pcs. Per Ctn.	Wt. Per 100	Dimensions					NAED UPC No. 632591-
					A	B	C	D	E	
LI50-S	1	4-14	100	2	1.08	0.38	0.78	0.26	0.15	71415-0
LI112-S	1	1/0-14	50	4	1.50	0.60	1.17	0.26	0.22	71410-5
LI200-S	2	3/0-6	50	14	2.00	0.80	1.56	0.41	0.30	71412-9
LI252-S	2	250-6	25	16	2.20	0.80	1.79	0.41	0.30	71414-3

Direct Burial Copper Lay-In Lug

- For copper conductors
- Open face design
- Perfect for swimming pool grounding
- Listed for direct burial in earth or concrete



E1981080



Catalog Number	Conductor Range	Dimensions (in.)				Pcs. Per Ctn.	Wt. Per 100	NAED UPC No. 632591-
		A	B	C	D			
LIC-50S	4-14	.97	.38	.69	.26	100	2	61466-5



MULTI-TAP CONNECTORS

Pre-INSuLAted MuLt I-tAP cONNect Or s



E9498

Galvan UV-rated pre-insulated multi-tap connectors are real timesavers for installers who work with line splicing, reducers and tap applications. Available in single-sided, double-sided and splice versions, the connectors don't require taping during installations. The PVC-covered connectors are enclosed in protective black Plastisol and filled with Penetrox™ oxide inhibitors to ensure greater contact resistance to moisture, chemicals and abrasion. The connectors' solid end caps protect against contamination.



ITO (offset)



IPL (one-sided)

dual-rated Multi-tap c onnectors

- Use with copper or aluminum conductors
- Tape-free installs save time
- 2 to 8 taps per connector
- Reduces inventory size and costs
- UL listed up to 600 MCM
- CSA-certified to 600 volts, 90° C
- Wire strip lengths: 5/8-inch to 1-1/8-inch



IPLD (two-sided)



ISR (splice/reducer)



Pre-INSULATED MULTITAP CONNECTORS



E9498

Catalog Number	Num. of Ports	Conductor Range (AWG/kcmil)	Dimensions (Inches)			Hex Key (Torque) (in.-lbs.)	Wire Strip Length(in.)	UPC
			L	W	H			
ITO-4	2	#14-4	1.16	1.50	1.25	1/8 (45)	5/8	632591-61449-8
ITO-2/0	2	#14-2/0	1.52	1.56	1.38	3/16 (120)	11/16	632591-61450-4
ITO-250	2	#10-250	2.03	2.64	2.13	5/16 (275)	1	632591-61451-1
ISR-2	2	#14-2	2.38	0.75	1.22	5/32 (45)	3/4	632591-61409-2
ISR-1/0	2	#14-1/0	2.91	0.91	1.38	3/16 (120)	1	632591-61410-8
ISR-250	2	#10-250	4.01	1.19	2.10	5/16 (120)	1-3/16	632591-61411-5
ISR-350	2	#10-350	4.63	1.34	2.35	5/16 (275)	1-3/8	632591-61412-2
ISR-500	2	#6-500	5.00	1.62	2.62	3/8 (375)	1-1/2	632591-61413-9
IPL4-2	2	#14-4	1.16	1.16	1.25	1/8 (45)	5/8	632591-61414-6
IPL2/0-2	2	#14-2/0	1.52	1.40	1.38	3/16 (120)	11/16	632591-61417-7
IPL250-2	2	#10-250	2.03	2.07	2.13	5/16 (275)	1	632591-61420-7
IPL250-3	3	#10-250	2.22	2.32	2.50	5/16 (275)	1-1/8	632591-61421-4
IPL600-2	2	#4-600	2.72	2.38	2.75	3/8 (375)	1-1/8	632591-61423-8
IPL2/0-3	3	#14-2/0	2.19	1.31	1.38	3/16 (120)	11/16	632591-61418-4
IPL4-3	3	#14-4	1.59	1.25	1.25	1/8 (45)	5/8	632591-61415-3
IPL4-4	4	#14-4	2.03	1.25	1.25	1/8 (45)	5/8	632591-61416-0
IPL250-3	3	#10-250	2.97	2.07	2.13	5/16 (275)	1	632591-61421-4
IPLD4-3	3	#14-4	1.59	1.50	1.25	1/8 (45)	5/8	632591-61425-2
IPLD4-4	4	#14-4	2.03	1.50	1.25	1/8 (45)	5/8	632591-61426-9
IPLD2/0-2	2	#14-2/0	1.52	1.56	1.25	3/16 (120)	11/16	632591-61427-6
IPLD2/0-3	3	#14-2/0	2.19	1.56	1.25	3/16 (120)	11/16	632591-61428-3
IPLD2/0-4	4	#14-2/0	2.86	1.56	1.25	3/16 (120)	11/16	632591-61429-0
IPLD2/0-6	6	#14-2/0	4.20	1.56	1.25	3/16 (120)	11/16	632591-61430-6
IPLD250-2	2	#10-250	2.03	2.64	2.13	5/16 (275)	1	632591-61431-3
IPLD250-3	3	#10-250	2.97	2.64	2.13	5/16 (275)	1	632591-61432-0
IPLD250-4	4	#10-250	3.91	2.64	2.13	5/16 (275)	1	632591-61433-7
IPLD250-6	6	#10-250	5.78	2.64	2.13	5/16 (275)	1	632591-61434-4
IPLD350-2	2	#10-350	2.22	3.00	2.50	5/16 (375)	1-1/8	632591-61436-8
IPLD350-3	3	#10-350	3.13	3.00	2.50	5/16 (375)	1-1/8	632591-61437-5
IPLD350-4	4	#10-350	4.04	3.00	2.50	5/16 (375)	1-1/8	632591-61438-2
IPLD350-6	6	#10-350	5.86	3.00	2.50	5/16 (375)	1-1/8	632591-61439-9
IPLD350-8	8	#10-350	7.68	3.00	2.50	5/16 (375)	1-1/8	632591-61441-2
IPLD600-2	2	#4-600	2.56	3.00	2.75	3/8 (375)	1-1/8	632591-61443-6
IPLD600-3	3	#4-600	3.77	3.00	2.75	3/8 (375)	1-1/8	632591-61444-3
IPLD600-4	4	#4-600	4.97	3.00	2.75	3/8 (375)	1-1/8	632591-61445-0
IPLD600-5	5	#4-600	6.17	3.00	2.75	3/8 (375)	1-1/8	632591-61446-7
IPLD600-6	6	#4-600	7.37	3.00	2.75	3/8 (375)	1-1/8	632591-61447-4
IPLD600-8	8	#4-600	9.78	3.00	2.75	3/8 (375)	1-1/8	632591-61448-1



TRANSFORMER LUG KITS

Transformer Lug Kits

Galvan's Mechanical or Compression Transformer Lug Kits contain UL listed and CSA dual rated connectors. The kit contains the lugs, bolts, nuts and washers for terminating any dry-type transformer. For use with copper or aluminum wire. (CO-OX oxide inhibitor is recommended for all aluminum wire connectors)

Step 1: Determine if the terminations are mechanical or compression.

Step 2: Find KVA rating of the transformer

Step 3: Move to the right and locate the transformer lug kit catalog number.

Mechanical Transformer Lug Kits



Transformer KVA Rating	Catalog Number	Connector (quantity)	Bolt Size	Nut/Washer Size	NAED UPC No. 632591--
15-37.5-1 phase 15-45--3 phase	XfmrKit 1	#2-14 (8) 250-#6 (4)	1/4-20 x 3/4	1/4	61292-0
50-75-1 phase 75-112.5-3 phase	XfmrKit 2	250-#6 (12)	1/4-20 x 3/4 1/4-20 x 2	1/4	61293-7
100-167-1 phase 150-300-3 phase	XfmrKit 3	350-#6 (6) 800-300 (7)	1/2-13 x 3 1/2-13 x 2-1/2	1/2	61294-0
400-500-3 phase	XfmrKit 4	800-300 (15)	1/2-13 x 2 1/2-13 x 2-1/2	1/2	61295-1

XfmrKit 3 & XfmrKit 4 use 2 conductor connectors to speed installation.

Compression Transformer Lug Kits

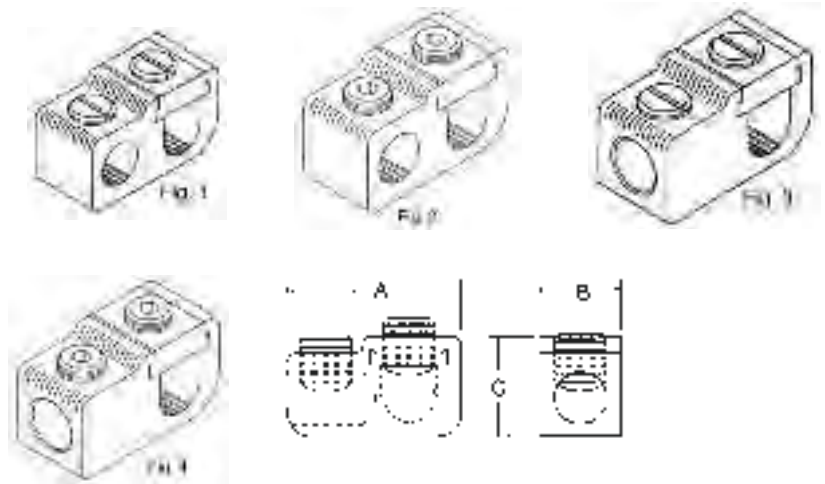


Transformer KVA Rating	Catalog Number	Connector (quantity)	Bolt Size	Nut/Washer Size	NAED UPC No. 632591--
15-37.5-1 phase 15-45--3 phase	XfmrKit 1C	#2-6 (8) 300-2/0 (4)	1/4-20 x 3/4	1/4	61296-8
50-75-1 phase 75-112.5-3 phase	XfmrKit 2C	300-2/0 (12)	1/4-20 x 3/4 1/4-20 x 2	1/4	61297-5
100-167-1 phase 150-300-3 phase	XfmrKit 3C	300-2/0 (3) 750-500 (22)	1/4-20 x 3/4 1/2-13 x 2	1/4 1/2	61298-2



GP-GT-Parallel and Tee Tap Connectors

- GALVAN parallel and "T" taps are manufactured from high strength 6061-T6 aluminum alloy to insure both maximum strength and conductivity.
- They are dual-rated for both copper and aluminum conductors and are electro-tin plated to provide low contact resistance and protection against corrosion.
- Assembly can be made with only a screwdriver or allen wrench and the connectors are re-useable.



E155274



Catalog Number	Fig. No.	Cond. Range		Pcs. Per Ctn.	Wt. Per 100	Dimensions			NAED UPC No. 632591-
		Main	Tap			A	B	C	
GP-2	1	2-12	4-14	50	4	1.39	0.63	0.88	71274-3
GP-2-WC	1	2-12	4-14	12	12	1.39	0.63	0.88	71282-8
GP-1/0	2	1/0-12	1/0-14	25	8	1.75	0.75	1.00	71273-6
GP-1/0-WC	2	1/0-2	1/0-14	12	16	1.75	0.75	1.00	71281-1
GP-250	2	250-6	250-6	25	14	2.00	1.00	1.31	71275-0
GP-250-0	2	250-1/0	1/0-14	25	16	2.25	1.00	1.31	71276-7
GP-250-WC	2	250-1/0	250-6	6	32	2.25	1.00	1.31	71283-5
GP-350	2	350-4/0	350-6	12	20	2.56	1.25	1.44	71277-4
GP-350-WC	2	350-4/0	350-6	6	35	2.56	1.25	1.44	71284-2
GP-500	2	500-350	500-2	12	37	3.13	1.38	1.75	71278-1
GP-500-WC	2	500-350	500-2	3	46	3.13	1.38	1.75	71288-0
GP-750	2	750-500	500-2	6	54	3.38	1.50	2.00	71279-8
GP-750-WC	2	750-500	500-2	3	120	3.38	1.50	2.00	71289-7

GT-2	3	2-12	4-14	50	4	1.39	0.63	0.88	71291-0
GT-2-WC	3	2-12	4-14	12	12	1.39	0.63	0.88	71301-6
GT-1/0	4	1/0-2	1/0-14	25	8	1.75	0.75	1.00	71290-3
GT-1/0-WC	4	1/0-2	1/0-14	12	16	1.75	0.75	1.00	71297-2
GT-250	4	250-6	250-6	25	14	2.00	1.00	1.31	71292-7
GT-250-0	4	250-1/0	1/0-14	25	16	2.25	1.00	1.31	71293-4
GT-250-WC	4	250-1/0	250-6	6	32	2.25	1.00	1.31	71302-3
GT-350	4	350-4/0	350-6	12	20	2.56	1.25	1.44	71294-1
GT-350-WC	4	350-4/0	350-6	6	35	2.56	1.25	1.44	71306-1
GT-500	4	500-350	500-2	12	37	3.13	1.38	1.75	71295-8
GT-500-WC	4	500-350	500-2	3	46	3.13	1.38	1.75	71310-8
GT-750	4	750-500	500-2	6	54	3.38	1.50	2.00	71296-5
GT-750-WC	4	750-500	500-2	3	120	3.38	1.50	2.00	71311-5

Notes:

- WC suffix refers to "with cover"
- GP prefix refers to "parallel tap"
- GT prefix refers to "T-tap"



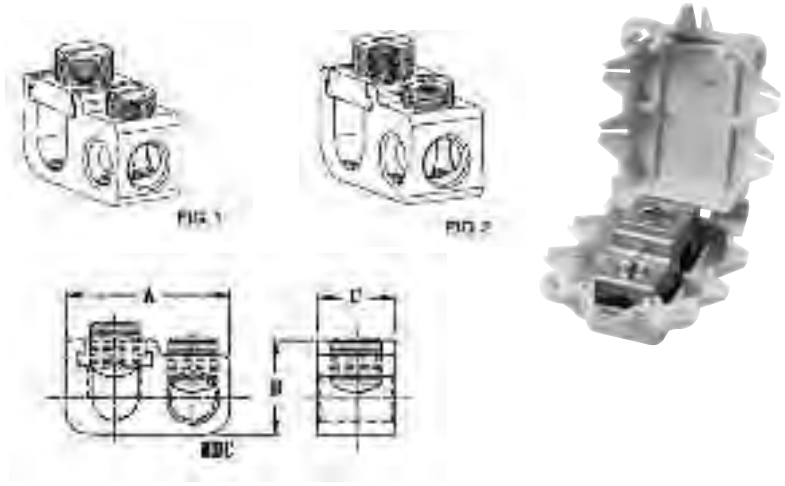
ALUMINUM TAP CONNECTORS

Type GGPT : Dual-Rated Solderless Connectors

For use with both aluminum and copper conductors

UL-486B Listed AL9CU (90°C Rated)

- GALVAN Parallel and Tee Taps are manufactured from high strength 6061-T6 aluminum alloy to insure both maximum strength and conductivity.
- They are dual-rated for both copper and aluminum conductors and are electro-tin plated to provide low contact resistance and protection against corrosion.
- Only a screwdriver or allen wrench is needed for assembly.



Catalog Number	Fig. No.	Cond. Range		Pcs. Per Ctn.	Wt. Per 100	Dimensions			NAED UPC No. 632591-
		Main	Tap			A	B	C	
GGPT-2	1	2-12	4-14	50	4	0.88	0.63	1.39	71614-7
GGPT-1/0	2	1/0-2	1/0-14	25	16	1.00	0.75	1.75	71615-4
GGPT-250-0	2	250-1/0	1/0-14	25	16	1.31	1.06	2.03	71616-1
GGPT-250-250	2	250-1/0	250-6	25	20	1.31	1.06	2.28	71617-8
GGPT-350	2	350-4/0	350-6	12	20	1.44	1.25	2.56	71618-5
GGPT-500	2	500-350	500-2	12	37	1.75	1.38	3.13	71619-2
GGPT-750-500	2	750-500	500-2	6	54	2.00	1.50	3.38	71620-8

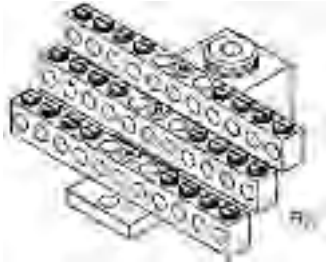
Covers for GGPT, GP and GT

Cover Catalog Number	Use with Connector	Pcs. Per Ctn.	Wt. Per 100	Dimensions			NAED UPC No. 632591-
				A	B	C	
TC-2	GP-2--GT-2	12	2.4	2.25	1.37	1.11	71589-8
TC-1/0	GP-1/0—GT-1/0	12	4	2.61	2.17	1.26	71588-1
TC-250	GP-250—GT-250	6	7.4	3.44	3.18	1.63	71590-4
TC-350	GP350—GT-350	6	8.4	3.76	3.29	1.76	71591-1
TC-500	GP-500—GT-500	3	12	4.39	3.34	2.12	71592-8
TC-750	GP-750—GT-750	3	14	4.55	3.45	2.34	71593-5



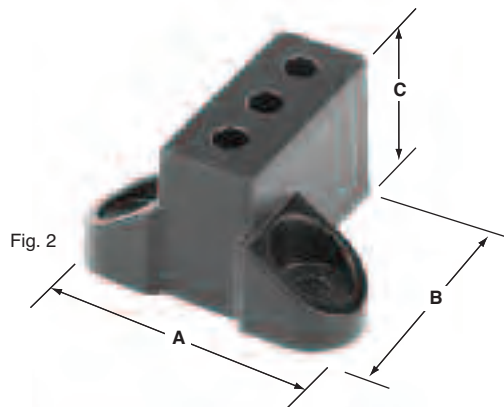
Dual-Rated SNB-Stacked Neutral Bars & Mounting Block

- GALVAN stacked neutral bars are manufactured from high strength 6061-T6 aluminum alloy to insure both maximum strength and conductivity.
- They are dual-rated for both copper and aluminum conductors and are electro-tin plated to provide low contact resistance and protection against corrosion.
- Assembly can be made with only a screwdriver or allen wrench.



NEUTRAL BARS

Catalog Number	Fig. No.	Conductor Range		No. Of Taps.	Pcs. Per Ctn.	Wt. Per 100	Dimensions			NAED UPC No. 632591-
		Main	Tap				A	B	C	
SNB350-12	1	350-6	6-14	12	1	22.8	2.22	2.19	1.55	71567-6
SNB350-24	1	350-6	6-14	24	1	29.6	3.47	2.19	1.55	71569-0
SNB350-30	1	350-6	6-14	30	1	36.3	4.09	2.19	1.55	71571-3
SNB350-36	1	350-6	6-14	36	1	39.2	4.72	2.19	1.55	71572-0
SNB350-42	1	350-6	6-14	42	1	45.9	5.34	2.19	1.55	71573-7



PHENOLIC MOUNTING BLOCK

Catalog Number	Fig. No.	Conductor Range		No. Of Taps.	Pcs. Per Ctn.	Wt. Per 100	Dimensions			NAED UPC No. 632591-
		Main	Tap				A	B	C	
SNBL-1	2	-	-	-	1	14.0	2.25	1.88	1.25	71575-1



DUAL-RATED COMPRESSION CONNECTORS

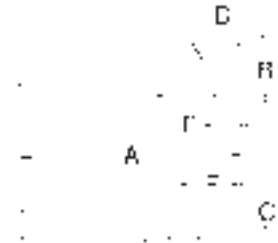
Dual-Rated Compression Connectors

For use with both aluminum
and copper conductors

- GALVAN aluminum compression connectors and splices are manufactured from high conductivity 1350 alloy aluminum seamless tubing.
- Tin plated and prefilled with CO-OX oxide inhibitor.



E9999



Catalog Number	Die Color	Cond.	Pcs. Per Ctn.	Wt. Per 100	Dimensions						NAED UPC No. 632591-
					A	B	C	D	E	F	
CLA8-25	Blue	8	20	0.8	1.81	0.63	0.09	0.28	0.31	0.81	71189-0
CLA6-25	Gray	6	20	0.9	1.93	0.53	0.12	0.28	0.31	0.75	71184-5
CLA6-31	Gray	6	20	0.9	1.93	0.53	0.12	0.34	0.38	0.75	71185-2
CLA6-38	Gray	6	20	0.9	1.93	0.53	0.12	0.41	0.38	0.75	71186-9
CLA4-25	Green	4	20	1.7	2.31	0.65	0.15	0.28	0.38	0.88	71173-9
CLA4-31	Green	4	20	1.7	2.31	0.65	0.15	0.34	0.38	0.88	71174-6
CLA4-38	Green	4	20	1.7	2.31	0.65	0.15	0.41	0.38	0.88	71175-3
CLA2-25	Pink	2	20	2.6	2.50	0.68	0.17	0.28	0.38	0.88	71157-9
CLA2-31	Pink	2	20	2.6	2.50	0.68	0.17	0.34	0.38	0.88	71158-6
CLA2-38	Pink	2	20	2.6	2.50	0.68	0.17	0.41	0.38	0.88	71159-3
CLA1-25	Gold	1	10	3.1	2.50	0.78	0.17	0.28	0.38	0.88	71150-0
CLA1-31	Gold	1	10	3.1	2.50	0.78	0.17	0.34	0.38	0.88	71151-7
CLA1-38	Gold	1	10	3.1	2.50	0.78	0.17	0.41	0.38	0.88	71152-4
CLA1/0-25	Tan	1/0	10	4.2	2.81	0.84	0.20	0.28	0.50	0.93	71153-1
CLA1/0-31	Tan	1/0	10	4.2	2.81	0.84	0.20	0.34	0.50	0.93	71154-8
CLA1/0-38	Tan	1/0	10	4.2	2.81	0.84	0.20	0.41	0.50	0.93	71155-5
CLA1/0-50	Tan	1/0	10	4.2	2.81	0.84	0.20	0.41	0.50	0.93	71156-2
CLA2/0-31	Olive	2/0	10	5.5	2.81	0.93	0.22	0.34	0.50	1.12	71162-3
CLA2/0-38	Olive	2/0	10	5.5	2.81	0.93	0.22	0.41	0.50	1.12	71163-0
CLA3/0-31	Ruby	3/0	10	7.4	3.00	1.06	0.24	0.34	0.50	1.12	71167-8
CLA3/0-38	Ruby	3/0	10	7.4	3.00	1.06	0.24	0.41	0.50	1.12	71168-5
CLA4/0-31	White	4/0	10	11.5	3.43	1.18	0.29	0.34	0.56	1.31	71177-7
CLA4/0-38	White	4/0	10	11.5	3.43	1.18	0.29	0.41	0.56	1.31	71178-4
CLA4/0-50	White	4/0	10	11.5	3.43	1.18	0.29	0.41	0.56	1.31	71179-1
CLA250-50	Red	250	5	17	3.50	1.43	0.32	0.56	0.63	1.31	71165-4
CLA300-38	Blue	300	5	20	4.00	1.43	0.35	0.41	0.63	1.50	71169-2
CLA300-50	Blue	300	5	20	4.00	1.43	0.35	0.56	0.63	1.50	71170-8
CLA350-50	Brown	350	3	27	4.25	1.50	0.38	0.56	0.69	1.50	71172-2
CLA400-50	Green	400	3	33	4.68	1.50	0.42	0.56	0.69	1.50	71181-4
CLA500-50	Pink	500	3	39	4.75	1.78	0.47	0.56	0.75	1.50	71183-8
CLA600-62	Black	600	3	53	5.12	1.96	0.51	0.69	0.75	1.87	71187-6
CLA750-62	Yellow	750	3	64	6.12	2.18	0.55	0.69	0.94	2.00	71188-3

Notes

UL Listed and CSA Certified for 600 Volts when installed with approved tools and dies. Can be used for high voltage applications up to 35 KV provided proper high voltage installation and insulation techniques are employed.

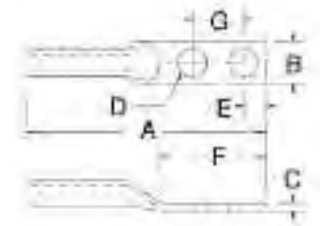
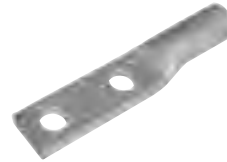
DUAL-RATED COMPRESSION CONNECTORS



Dual-Rated Compression Connectors - 2 Hole Long Barrel

For use with both aluminum and copper conductors

- GALVAN aluminum compression connectors and splices are manufactured from high strength 1350 alloy aluminum seamless tubing.
- Tin plated and prefilled with CO-OX oxide inhibitor.



Catalog Number	Die Color	Cond.	Pcs. Per Ctn.	Wt. Per 100	Dimensions							NAED UPC No. 632591-
					A	B	C	D	E	F	G	
2CLA1/0-50	Tan	1/0	10	7.5	3.50	0.84	0.20	0.56	0.50	1.87	1.00	-
2CLA2/0-50	Olive	2/0	10	12	4.80	0.93	0.22	0.56	0.63	3.12	1.75	70791-6
2CLA3/0-50	Ruby	3/0	10	16	5.00	1.06	0.24	0.56	0.63	3.12	1.75	70793-0
2CLA4/0-50	White	4/0	10	20	5.25	1.18	0.29	0.56	0.63	3.12	1.75	70797-8
2CLA250-50	Red	250	5	25	5.31	1.28	0.32	0.56	0.63	3.12	1.75	70792-3
2CLA300-50	Blue	300	3	30	5.50	1.40	0.35	0.56	0.63	3.12	1.75	70794-7
2CLA350-50	Brown	350	3	35	5.87	1.50	0.38	0.56	0.63	3.12	1.75	70795-4
2CLA400-50	Green	400	3	52	6.43	1.62	0.42	0.56	0.63	3.12	1.75	70798-5
2CLA500-38	Pink	500	3	61	4.87	1.81	0.47	0.38	0.44	2.06	1.00	61273-9
2CLA500-50	Pink	500	3	61	6.50	1.78	0.47	0.56	0.63	3.12	1.75	70800-5
2CLA600-50	Black	600	3	86	6.75	1.96	0.51	0.56	0.63	3.12	1.75	70801-2
2CLA750-50	Yellow	750	3	96	7.37	2.18	0.55	0.56	0.63	3.12	1.75	70802-9
2CLA1000-50	--	1000	1	107	7.78	2.50	0.50	0.56	0.75	3.00	1.75	61274-6

Notes

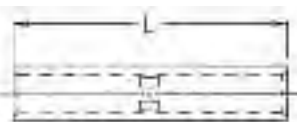
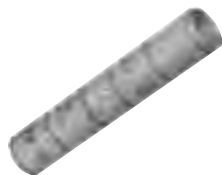
UL Listed and CSA Certified for 600 Volts when installed with approved tools and dies. Can be used for high voltage applications up to 35 KV provided proper high voltage installation and insulation techniques are employed.

Dual-Rated Compression Splices

Dual-Rated Connectors

For use with both aluminum and copper conductors

- GALVAN aluminum compression connectors and splices are manufactured from high Conductivity 1350 alloy aluminum seamless tubing.
- Tin plated and prefilled with CO-OX oxide inhibitor.



Catalog Number	Die Color	Cond.	Pcs. Per Ctn.	Wt. Per 100	Length	NAED UPC No. 632591-
SA-8	BLUE	8	20	1	1.50	71536-2
SA-6	GRAY	6	20	1	1.63	71533-1
SA-4	GREEN	4	20	1.8	2.00	71529-4
SA-2	PINK	2	20	3.5	2.38	71523-2
SA-1	GOLD	1	10	3.5	2.38	71521-8
SA-1/0	TAN	1/0	10	4	2.50	71522-5
SA-2/0	OLIVE	2/0	10	5.5	2.63	71524-9
SA-3/0	RUBY	3/0	10	7	2.88	71526-3
SA-4/0	WHITE	4/0	10	13	3.13	71530-0
SA-250	RED	250	5	17	3.25	71525-6
SA-300	BLUE	300	5	20	3.25	71527-0
SA-350	BROWN	350	3	30	3.88	71528-7
SA-400	GREEN	400	3	35	4.88	71531-7
SA-500	PINK	500	3	42	5.00	71532-4
SA-600	BLACK	600	3	42	5.13	71534-8
SA-750	YELLOW	750	3	70	5.38	71535-5

Notes

UL Listed and CSA Certified for 600 Volts 35 KV when installed with approved tools and dies. For applications greater than 2000 volts consult cable manufacturer for voltage stress relief instructions.

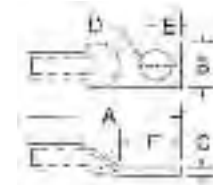


SHORT BARREL COPPER COMPRESSION CONNECTORS

One-Hole Short Barrel Copper

For use with copper conductors **only**.

- Specially designed for industrial and building applications.
- GALVAN compression connectors are manufactured from high strength pure electrolytic copper to insure both maximum strength and conductivity.
- All connectors are color coded for quick, easy identification with matching die.
- Tin-plated for corrosion resistance.
- Specially chamfered barrel for ease of installation.
- Can be used for high voltage application up to 35 kV provided proper high voltage insulation techniques are used.
- U.L. Listed for AWG conductor when installed with approved tools and dies.



Catalog Number	Die Color	Conductor	Pcs. Per Ctn.	Wt. Per 100	Dimensions						NAED UPC No. 632591-
					A	B	C	D	E	F	
CC8-19	Red	8 Str.	50	1.5	1.63	0.39	0.08	0.20	0.22	0.63	71051-0
CC8-25	Red	8 Str.	50	1.5	1.69	0.48	0.06	0.28	0.31	0.69	71052-7
CC8-31	Red	8 Str.	50	1.5	1.69	0.48	0.06	0.34	0.31	0.69	71053-4
CC6-19	Blue	6 Str.	50	1.8	1.69	0.39	0.08	0.20	0.22	0.63	71044-2
CC6-25	Blue	6 Str.	50	1.8	1.69	0.39	0.06	0.28	0.31	0.06	71045-9
CC6-31	Blue	6 Str.	50	1.8	1.75	0.50	0.06	0.34	0.31	0.69	71046-6
CC6-38	Blue	6 Str.	50	1.8	1.75	0.50	0.06	0.34	0.31	0.69	71047-3
CC4-19	Gray	4 Str.	50	2.1	1.75	0.52	0.09	0.20	0.31	0.69	71034-3
CC4-25	Gray	4 Str.	50	2.1	1.76	0.52	0.09	0.28	0.34	0.69	71035-0
CC4-31	Gray	4 Str.	50	2.1	1.81	0.56	0.09	0.34	0.38	0.69	71036-7
CC4-38	Gray	4 Str.	50	2.1	1.81	0.56	0.08	0.20	0.38	0.75	71037-4
CC2-25	Brown	2 Str.	50	3.6	1.94	0.63	0.08	0.28	0.34	0.75	71020-6
CC2-31	Brown	2 Str.	50	3.6	1.94	0.63	0.10	0.34	0.38	0.81	71021-3
CC2-38	Brown	2 Str.	50	3.6	1.94	0.63	0.10	0.41	0.41	0.81	71022-0
CC1-25	Green	1 Str.	20	3.6	2.00	0.67	0.10	0.28	0.34	0.81	71012-1
CC1-31	Green	1 Str.	20	3.6	2.00	0.67	0.11	0.34	0.38	0.81	71013-8
CC1-38	Green	1 Str.	20	3.6	2.00	0.67	0.11	0.41	0.41	0.81	71014-5
CC1/0-25	Pink	1/0 Str.	10	4.3	2.06	0.73	0.11	0.28	0.34	0.81	71015-2
CC1/0-31	Pink	1/0 Str.	10	4.3	2.06	0.73	0.12	0.34	0.38	0.81	71016-9
CC1/0-38	Pink	1/0 Str.	10	4.3	2.06	0.73	0.12	0.41	0.41	0.81	71017-6
CC1/0-50	Pink	1/0 Str.	10	4.3	2.06	0.73	0.12	0.56	0.41	0.81	71018-3
CC2/0-38	Black	2/0 Str.	10	6.2	2.31	0.81	0.12	0.41	0.44	0.81	71023-7
CC2/0-50	Black	2/0 Str.	10	6.2	2.31	0.81	0.12	0.56	0.53	1.06	71024-4
CC3/0-38	Orange	3/0 Str.	10	7.6	2.50	0.94	0.12	0.41	0.44	0.81	71028-2
CC3/0-50	Orange	3/0 Str.	10	7.6	2.50	0.94	0.13	0.56	0.53	1.06	71029-9
CC4/0-38	Purple	4/0 Str.	10	7.7	2.53	1.06	0.13	0.41	0.44	0.81	71038-1
CC4/0-50	Purple	4/0 Str.	10	7.7	2.53	1.06	0.13	0.56	0.53	1.06	71039-8
CC250-38	Yellow	250 MCM	10	13	2.69	1.13	0.14	0.41	0.44	1.06	71025-1
CC250-50	Yellow	250 MCM	10	13	2.69	1.13	0.14	0.56	0.53	1.06	71026-8
CC300-50	White	300 MCM	10	14	2.75	1.25	0.16	0.56	0.53	1.13	71030-5
CC300-62	White	300 MCM	10	14	2.75	1.25	0.16	0.66	0.88	1.75	71031-2
CC350-50	Red	350 MCM	10	19	2.88	1.31	0.17	0.56	0.53	1.13	71032-9
CC350-62	Red	350 MCM	10	19	2.88	1.31	0.17	0.69	0.53	1.13	71033-6
CC400-50	Blue	400 MCM	6	25	3.06	1.39	0.18	0.56	0.53	1.25	71040-4
CC400-62	Blue	400 MCM	6	25	3.06	1.39	0.18	0.69	0.88	1.75	71041-1
CC500-50	Brown	500 MCM	6	40	3.31	1.56	0.21	0.56	0.53	1.25	71042-8
CC500-62	Brown	500 MCM	6	40	3.81	1.56	0.21	0.69	0.88	1.75	71043-5
CC600-62	Green	600 MCM	6	60	4.13	1.78	0.25	0.56	0.88	1.75	71048-0
CC700-62	Pink	700 MCM	6	70	4.44	1.81	0.25	0.69	0.88	1.88	71049-7
CC750-62	Black	750 MCM	6	82	4.44	1.91	0.27	0.69	0.88	1.88	71050-3
CC1000-75	White	1000 MCM	3	120	5.13	2.19	0.32	0.78	0.94	1.88	71019-0

Notes: * Consult factory for availability of special mounting hole sizes.

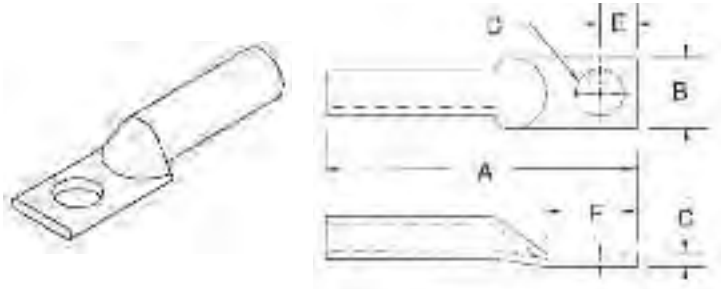
LONG BARREL COPPER COMPRESSION CONNECTORS



One-Hole Long Barrel Copper

For use with copper conductors **only**.

- Specially designed for industrial and building applications
- **GALVAN** compression connectors are manufactured from high strength pure electrolytic copper to insure both maximum strength and conductivity.
- All connectors are color coded for quick, easy identification with matching die.
- Tin-plated for corrosion resistance.
- Specially chamfered barrel for ease of installation.
- Can be used for high voltage application up to 35 kV provided proper high voltage insulation techniques are used.
- U.L. Listed for AWG conductor when installed with approved tools and dies.



Catalog Number	Die Color	Conductor	Pcs. Per Ctn.	Wt. Per 100	Dimensions						NAED UPC No. 632591-
					A	B	C	D	E	F	
CCB8-25	Red	8 Str.	50	2	1.94	0.48	0.08	0.27	0.31	0.69	71073-2
CCB6-25	Blue	6 Str.	50	2.2	1.94	0.50	0.06	0.27	0.31	0.69	71069-5
CCB4-25	Gray	4 Str.	50	2.5	2.25	0.52	0.09	0.27	0.34	0.75	71064-0
CCB4-38	Gray	4 Str.	50	2.5	2.61	0.81	0.09	0.38	0.31	1.00	61208-1
CCB2-31	Brown	2 Str.	25	4.5	2.32	0.63	0.10	0.33	0.38	0.81	71057-2
CCB1-31	Green	1 Str.	10	5.5	2.63	0.67	0.11	0.33	0.38	0.81	71054-1
CCB1/0-38	Pink	1/0 Str.	10	6.0	2.88	0.74	0.12	0.41	0.41	1.06	71055-8
CCB2/0-38	Black	2/0 Str.	10	8.2	2.88	0.82	0.12	0.41	0.44	1.06	71058-9
CCB2/0-50	Black	2/0 Str.	10	8.2	2.88	0.82	0.12	0.41	0.44	1.06	71059-6
CCB3/0-50	Orange	3/0 Str.	10	9.5	3.50	0.94	0.13	0.54	0.53	1.06	71061-9
CCB4/0-50	Purple	4/0 Str.	10	13	3.53	1.06	0.14	0.54	0.53	1.06	71066-4
CCB250-50	Yellow	250 MCM	10	17	3.56	1.13	0.14	0.54	0.53	1.06	71060-2
CCB300-50	White	300 MCM	10	20	3.63	1.25	0.16	0.54	0.53	1.13	71062-6
CCB350-50	Red	350 MCM	10	26	3.75	1.31	0.17	0.54	0.53	1.13	71063-3
CCB400-50	Blue	400 MCM	6	33	3.88	1.41	0.18	0.54	0.53	1.25	71067-1
CCB500-50	Brown	500 MCM	6	50	4.44	1.56	0.21	0.54	0.53	1.25	71068-8
CCB600-62	Green	600 MCM	6	70	5.00	1.72	0.25	0.66	0.88	1.75	71071-8
CCB750-62	Black	750 MCM	6	96	5.87	1.91	0.27	0.66	0.88	1.86	71072-5
CCB1000-62	White	1000 MCM	3	132	6.25	2.19	0.32	0.66	0.88	2.13	71056-5

Notes

*Consult factory for availability of special mounting hole sizes.



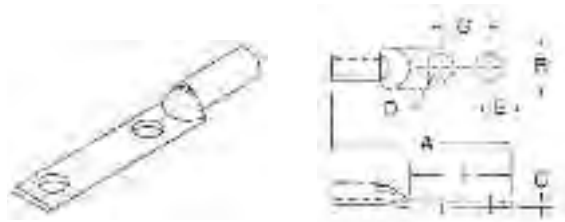


SHORT BARREL COPPER COMPRESSION CONNECTORS

Two-Hole Short Barrel Copper

For use with copper conductors **only**.

- Specially designed for industrial and building applications.
- GALVAN compression connectors are manufactured from high strength pure electrolytic copper to insure both maximum strength and conductivity.
- All connectors are color coded for quick, easy identification with matching die.
- Tin-plated for corrosion resistance.
- Specially chamfered barrel for ease of installation.
- Can be used for high voltage application up to 35 kV provided proper high voltage insulation techniques are used.
- U.L. Listed for AWG conductor when installed with approved tools and dies.



Catalog Number	Die Color	Cond.	Pcs. Per Ctn.	Wt. Per 100	Dimensions							NAED UPC No. 632591-
					A	B	C	D	E	F	G	
CCL8-19	Red	8 Str.	50	2.8	1.91	0.41	0.06	0.20	0.31	1.13	0.63	71123-4
CCL6-25	Blue	6 Str.	50	3.6	1.97	0.41	0.09	0.25	0.25	1.13	0.63	71119-7
CCL4-25	Gray	4 Str.	50	4.4	2.03	0.50	0.09	0.25	0.25	1.13	0.63	71112-8
CCL2-25	Brown	2 Str.	25	6.4	2.41	0.56	0.09	0.25	0.25	1.13	0.63	71101-2
CCL1-25	Green	1 Str.	25	9.2	2.59	0.97	0.09	0.25	0.38	1.75	0.88	71096-1
CCL1/0-31	Pink	1/0 Str.	10	10.8	2.69	0.75	0.13	0.34	0.31	1.75	0.88	71097-8
CCL1/0-38	Pink	1/0 Str.	10	10.8	2.69	0.75	0.13	0.41	0.38	1.75	0.88	71098-5
CCL2/0-38	Black	2/0 Str.	10	12.2	3.81	0.81	0.13	0.41	0.38	2.81	1.75	71102-9
CCL2/0-50	Black	2/0 Str.	10	12.2	3.81	0.81	0.13	0.50	0.50	2.81	1.75	71103-6
CCL3/0-38	Orange	3/0 Str.	10	16.2	3.25	0.94	0.13	0.41	0.38	1.81	1.00	71106-7
CCL3/0-50	Orange	3/0 Str.	10	16.2	3.81	0.81	0.13	0.50	0.50	2.81	1.75	71107-4
CCL4/0-38	Purple	4/0 Str.	10	18.8	3.28	1.06	0.14	0.41	0.38	1.81	1.00	71113-5
CCL4/0-50	Purple	4/0 Str.	10	18.8	4.25	1.09	0.13	0.50	0.50	2.81	1.75	71114-2
CCL250-38	Yellow	250 MCM	10	23.6	3.43	1.13	0.15	0.41	0.38	1.81	1.00	71104-3
CCL250-50	Yellow	250 MCM	10	23.6	4.34	1.13	0.16	0.50	0.50	3.00	1.75	71105-0
CCL300-38	White	300 MCM	10	27	3.43	1.25	0.16	0.41	0.38	1.81	1.00	71108-1
CCL300-50	White	300 MCM	10	27	4.53	1.19	0.16	0.50	0.50	3.00	1.75	71109-8
CCL350-38	Red	350 MCM	10	32.4	3.56	1.31	0.17	0.41	0.38	1.81	1.00	71110-4
CCL350-50	Red	350 MCM	10	32.4	4.53	1.34	0.16	0.50	0.50	3.00	1.75	71111-1
CCL400-38	Blue	400 MCM	10	37.9	3.62	1.41	0.18	0.41	0.38	1.81	1.00	71115-9
CCL400-50	Blue	400 MCM	10	37.9	4.81	1.41	0.16	0.50	0.50	3.00	1.75	71116-6
CCL500-38	Brown	500 MCM	10	52.2	3.87	1.56	0.21	0.41	0.38	1.81	1.00	71117-3
CCL500-50	Brown	500 MCM	10	52.2	5.00	1.53	0.22	0.50	0.50	3.00	1.75	71118-0
CCL600-38	Green	600 MCM	5	85	4.18	1.72	0.22	0.41	0.38	1.18	1.00	71120-3
CCL600-50	Green	600 MCM	5	85	5.13	1.72	0.22	0.50	0.50	3.00	1.75	71121-0
CCL750-50	Black	750 MCM	5	85.6	5.22	1.72	0.27	0.50	0.50	3.00	1.75	71122-7
CCL1000-50	White	1000 MCM	5	126.6	5.44	2.25	0.28	0.50	0.50	3.00	1.75	71100-5

Notes

Consult factory for availability of special mounting hole sizes.



E9999



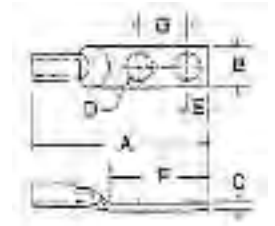
LONG BARREL COPPER COMPRESSION CONNECTORS



Two-Hole Long Barrel Copper

For use with copper conductors **only**.

- Specially designed for industrial and building applications.
- **GALVAN** compression connectors are manufactured from high strength pure electrolytic copper to insure both maximum strength and conductivity.
- All connectors are color coded for quick, easy identification with matching die.
- Tin-plated for corrosion resistance.
- Specially chamfered barrel for ease of installation.
- Can be used for high voltage application up to 35 kV provided proper high voltage insulation techniques are used.
- U.L. Listed for AWG conductor when installed with approved tools and dies.



Catalog Number	Die Color	Cond.	Pcs. Per Ctn.	Wt. Per 100	Dimensions							NAED UPC No. 632591-
					A	B	C	D	E	F	G	
CCBL8-25	Red	8 Str.	50	3.0	2.88	0.41	0.06	0.25	0.25	1.44	0.63	71094-7
CCBL6-25	Blue	6 Str.	50	3.2	2.25	0.41	0.06	0.25	0.25	1.25	0.63	71091-6
CCBL6-38	Blue	6 Str.	50	3.2	2.56	0.50	0.06	0.38	0.38	1.25	1.00	71632-1
CCBL4-25	Gray	4 Str.	50	3.9	2.19	0.53	0.19	0.25	0.25	1.19	0.63	71087-9
CCBL4-50	Gray	4 Str.	50	3.9	2.19	0.53	0.19	0.50	0.25	1.19	0.63	61278-4
CCBL2-31	Brown	2 Str.	25	6.1	2.81	0.44	0.09	0.33	0.38	1.38	0.75	71080-0
CCBL1-31	Green	1 Str.	10	6.9	2.97	0.66	0.09	0.33	0.38	1.38	0.88	71074-9
CCBL1/0-31	Pink	1/0 Str.	10	8.8	3.50	0.71	0.12	0.33	0.50	1.62	1.00	71076-3
CCBL1/0-50	Pink	1/0 Str.	10	8.8	3.97	0.75	0.13	0.50	0.50	3.00	1.75	71077-0
CCBL2/0-50	Black	2/0 Str.	10	15	4.19	0.81	0.13	0.50	0.50	3.00	1.75	71082-4
CCBL3/0-50	Orange	3/0 Str.	10	16	4.44	0.94	0.13	0.50	0.50	2.94	1.75	71084-8
CCBL4/0-50	Purple	4/0 Str.	10	22	4.69	1.03	0.13	0.50	0.50	3.00	1.75	71088-6
CCBL250-50	Yellow	250 MCM	10	27	4.91	1.06	0.13	0.50	0.50	3.00	1.75	71083-1
CCBL300-50	White	300 MCM	10	31	5.22	1.19	0.13	0.50	0.50	3.00	1.75	71085-5
CCBL350-50	Red	350 MCM	10	40	5.34	1.34	0.16	0.50	0.50	3.00	1.75	71086-2
CCBL400-50	Blue	400 MCM	6	45	5.44	1.41	0.19	0.50	0.50	3.00	1.75	71089-3
CCBL500-50	Brown	500 MCM	6	66	5.94	1.59	0.19	0.50	0.50	3.00	1.75	71090-9
CCBL600-50	Green	600 MCM	6	75	5.75	1.72	0.22	0.50	0.50	3.00	1.75	71092-3
CCBL750-50	Black	750 MCM	6	115	6.09	1.91	0.25	0.50	0.50	3.00	1.75	71093-0
CCBL1000-50	White	1000MCM	3	152	6.34	2.25	0.28	0.50	0.50	3.00	1.75	71078-7

Notes

Consult factory for availability of special mounting hole sizes.

- UL Listed and CSA Certified for 600 volts when installed with approved tools and dies. Can be used for high voltage applications up to 35
- KV provided proper high voltage installation and insulation techniques are employed.



COPPER COMPRESSION SPLICES

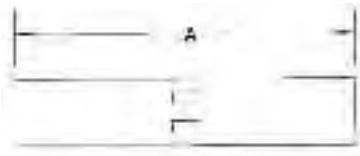
Short Barrel Copper Compression Splices

- Specially designed for industrial and building applications.
- GALVAN compression connectors are manufactured from high strength pure electrolytic copper to insure both maximum strength and conductivity.
- All connectors are color coded for quick, easy identification with matching die.
- Tin-plated for corrosion resistance.
- Specially chamfered barrel for ease of installation.
- Can be used for high voltage application up to 35 kV provided proper high voltage insulation techniques are used.
- U.L. Listed for AWG conductor when installed with approved tools and dies.

Catalog Number	Die Color	Conductor	Pcs. Per Ctn.	Wt. Per 100	A	NAED UPC No. 632591-
CSS-8	Red	8 Str.	50	1.4	1.62	71241-5
CSS-6	Blue	6 Str.	50	2.2	1.75	71237-8
CSS-4	Gray	4 Str.	50	2.6	1.87	71233-0
CSS-2	Brown	2 Str.	25	4	1.87	71227-9
CSS-1	Green	1 Str.	10	5.2	1.87	71224-8
CSS-1/0	Pink	1/0 Str.	10	5.7	1.87	71225-5
CSS-2/0	Black	2/0 Str.	10	6.5	2.00	71228-6
CSS-3/0	Orange	3/0 Str.	10	7.7	2.12	71230-9
CSS-4/0	Purple	4/0 Str.	10	8	2.12	71234-7
CSS-250	Yellow	250 MCM	6	12.5	2.25	71229-3
CSS-300	White	300 MCM	6	14	2.25	71231-6
CSS-350	Red	350 MCM	6	18	2.37	71232-3
CSS-400	Blue	400 MCM	6	22	2.50	71235-4
CSS-500	Brown	500 MCM	6	35	2.87	71236-1
CSS-600	Green	600 MCM	6	40	3.00	71238-5
CSS-700	Pink	700 MCM	6	50	3.00	71239-2
CSS-750	Black	750 MCM	3	56	3.38	71240-8
CSS-1000	White	1000 MCM	3	87	3.87	71226-2

Notes

UL Listed and CSA Certified for 600 volts when installed with approved tools and dies. Can be used for high voltage applications up to 35 KV provided proper high voltage installation and insulation techniques are employed.





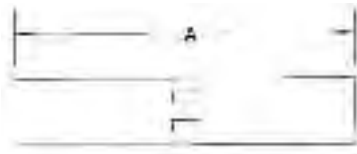
Long Barrel Copper Compression Splices

- Specially designed for industrial and building applications.
- GALVAN compression connectors are manufactured from high strength pure electrolytic copper to insure both maximum strength and conductivity.
- All connectors are color coded for quick, easy identification with matching die.
- Tin-plated for corrosion resistance.
- Specially chamfered barrel for ease of installation.
- Can be used for high voltage application up to 35 kV provided proper high voltage insulation techniques are used.
- U.L. Listed for AWG conductor when installed with approved tools and dies.

Catalog Number	Die Color	Conductor	Pcs. Per Ctn.	Wt. Per 100	A	NAED UPC No. 632591-
CSL-8	Red	8 Str.	50	3.5	2.00	71223-1
CSL-6	Blue	6 Str.	50	4	2.38	71220-0
CSL-4	Gray	4 Str.	50	5.2	2.38	71216-3
CSL-2	Brown	2 Str.	25	7.8	2.62	71210-1
CSL-1	Green	1 Str.	10	10	2.87	71207-1
CSL-1/0	Pink	1/0 Str.	10	11	2.87	71208-8
CSL-2/0	Black	2/0 Str.	10	13	3.12	71211-8
CSL-3/0	Orange	3/0 Str.	10	15	3.12	71213-2
CSL-4/0	Purple	4/0 Str.	10	16	3.38	71217-0
CSL-250	Yellow	250 MCM	6	25	3.38	71212-5
CSL-300	White	300 MCM	6	26	4.12	71214-9
CSL-350	Red	350 MCM	6	31	4.12	71215-6
CSL-400	Blue	400 MCM	6	37	4.38	71218-7
CSL-500	Brown	500 MCM	6	57	4.62	71219-4
CSL-600	Green	600 MCM	6	65	5.38	71221-7
CSL-750	Black	750 MCM	3	102	5.87	71222-4
CSL-1000	White	1000 MCM	3	140	6.12	71209-5

Notes

UL Listed and CSA Certified for 600 volts when installed with approved tools and dies. Can be used for high voltage applications up to 35 KV provided proper high voltage installation and insulation techniques are employed.





COPPER MECHANICAL CONNECTORS

Copper Mechanical Connectors

- GALVAN single hole solderless lugs and double hole solderless lugs are manufactured from high strength pure electrolytic copper to insure both maximum strength and conductivity, plain finished.
- Conductors are inserted between arched pressure bar and V-bottom collar which positions the wire for positive contact and maximum secureness.
- Easy to install with screwdriver, wrench, or pliers.
- Re-useable; plain copper finish.



Catalog Number	Fig. No.	Cond. Range	Pcs. Per Ctn.	Wt. Per 100	Dimensions				NAED UPC No. 632591-
					A	B	C	D	
CF-25	1	10-14	100	1.4	1.00	0.31	0.66	0.16	71129-6
CF-35	1	6-14	100	3.2	1.31	0.50	0.81	0.20	71132-6
CF-90	1	2-8	100	4.5	1.22	0.50	1.00	0.27	71133-3
CF-125	2	1/0-2	50	11	1.97	0.63	1.34	0.27	71124-1
CF-175	2	3/0-4	25	17	2.19	0.75	1.56	0.41	71125-8
CF-225	2	4/0-2	25	25	2.63	1.00	1.81	0.41	71126-5
CF-300	2	350-1/0	18	51	3.19	1.00	2.63	0.41	71128-9
CF-400	2	500-1/0	3	80	4.25	1.50	2.75	0.41	71130-2
CF-650	2	1000-600	1	190	4.63	2.00	3.69	0.53	71131-9

CFS-35	3	8-14	100	2.2	1.19	0.38	0.75	0.20	71139-5
CFS-70	3	4-14	100	2.8	1.31	0.50	0.81	0.27	71142-5
CFS-125	3	1/0-2	50	11	1.97	0.63	1.34	0.27	71134-0
CFS-225	4	4/0-1/0	25	23	2.63	1.00	1.81	0.41	71136-4
CFS-400	4	500-4/0	3	68	4.25	1.50	2.75	0.41	71140-1

Notes:

CF represents "bent" tang

CFS represents "straight" tang



Fig. 5

Catalog Number	Fig. No.	Cond. Range	Pcs. Per Ctn.	Wt. Per 100	Dimensions				NAED UPC No. 632591-
					A	B	C	D	
DCF-450	5	2/0-4/0	6	58.5	3.38	1.50	0.94	0.41	71242-2
DCF-600	5	1/0-350	6	90	3.63	1.75	1.18	0.41	71243-9
DCF-800	5	4/0-500	3	162.5	4.44	2.00	1.41	0.53	71244-6



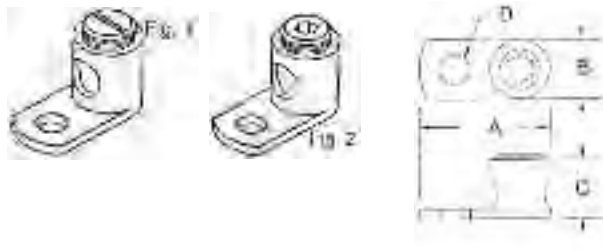
Type FLC Copper Lug

- One-piece construction for strength and durability.
- Excellent for confined quarters.
- Catalog Nos. FLC-500 and FLC-1000 are cast from high strength bronze alloy.
- All other Catalog numbers are cold forged from pure electrolytic copper with 99% conductivity.

Catalog Number	Fig. No.	Cond. Range	Pcs. Per Ctn.	Wt. Per 100	Dimensions				NAED UPC No. 632591-
					A	B	C	D	
FLC-8	1	8-14	100	1.5	0.70	0.34	0.38	0.20	71263-7
FLC-4	1	4-14	100	3.6	1.09	0.53	0.55	0.27	71262-0
FLC-1/0	2	1/0-8	50	9	1.50	0.63	0.75	0.34	71260-6
FLC-250	2	250-6	25	17.12	1.97	0.63	0.94	0.41	71261-3
FLC-500	2	500-4/0	25	65	3.00	1.81	1.47	0.63	71628-4
FLC-1000	2	1000-500	10	155	4.00	2.00	2.53	0.75	71629-1



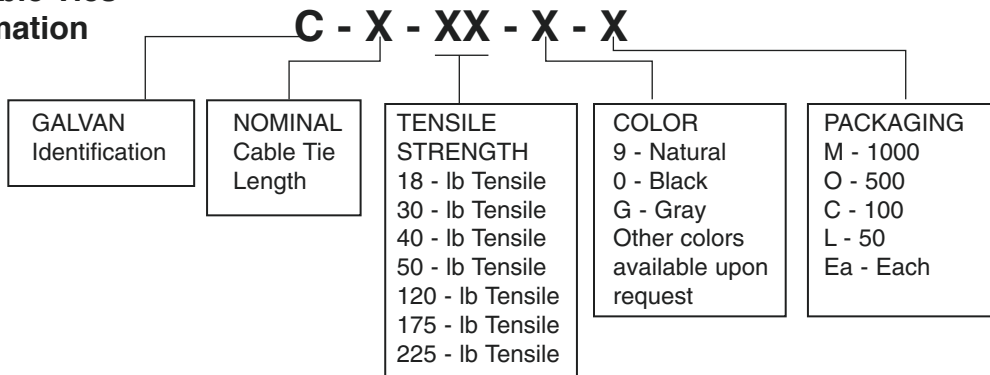
E50999





GALVAN CABLE TIES: MADE IN USA

GALVAN Cable Ties Order Information



Nylon Catalog Number	Tensile Str.	Length Inches	Width Inches	Color	Bundle Diameter	Military Spec	Per Case	Per Bag	NAED UPC No. 632591-
C-4-18-9-C	18	4.1	.100	Natural	1/16-7/8	M53367-4-9	25,000	100	70954-5
C-5-40-9-C	40	5.6	.146	Natural	1/16-1 1/4	M53367-5-0	20,000	100	70962-0
C-7-50-9-C	50	7.5	.190	Natural	1/8-1 3/4	M53367-1-9	10,000	100	70970-5
C-8-18-9-C	18	8.0	.100	Natural	1/16-2	-	20,000	100	70978-1
C-8-40-9-C	40	8.7	.146	Natural	1/16-2 1/8	-	10,000	100	70981-1
C-11-50-9-C	50	11.2	.192	Natural	1/16-3	M53367-7-9	5,000	100	70931-6
C-14-50-9-C	50	14.5	.192	Natural	1/16-4	M53367-2-9	5,000	100	70942-2

Black Ultra Violet									
Nylon Catalog Number	Tensile Str.	Length Inches	Width Inches	Color	Bundle Diameter	Military Spec	Per Case	Per Bag	NAED UPC No. 632591-
C-4-18-O-C	18	4.1	.100	Black	1/16-7/8	M53367-4-0	25,000	100	70958-3
C-5-30-O-C	30	5.6	.146	Black	1/16-1 3/8	M53367-5-0	20,000	100	70961-3
C-5-40-O-C	40	5.6	.146	Black	1/16-1 3/8	-	20,000	100	70965-1
C-7-50-O-C	50	7.5	.190	Black	1/8-1 3/4	M53367-1-0	10,000	100	70973-6
C-8-18-O-C	18	8.0	.100	Black	1/16-2	-	20,000	100	70979-8
C-11-50-O-C	50	11.2	.192	Black	1/8-3	M53367-7-0	5,000	100	70936-1
C-14-50-O-C	50	14.5	.192	Black	1/8-4	M53367-2-0	5,000	100	70944-6
C-14-120-O-C	120	14.5	.192	Black	1/8-4 1/4	-	5,000	100	70937-8
C-24-175-O-L	175	24.0	.345	Black	3/16-7	-	500	50	70949-1
C-36-175-O-C	175	36.0	.345	Black	3/16-7	-	5,000	100	70953-8

Heavy Duty									
Nylon Catalog Number	Tensile Str.	Length Inches	Width Inches	Color	Bundle Diameter	Military Spec	Per Case	Per Bag	NAED UPC No. 632591-
C-18-120-9-C	120	8.0	.300	Natural	3/16 - 2	-	2,000	100	70977-4
C-14-120-9-C	120	15.2	.300	Natural	3/16 - 4-1/4	M53367-3-9	2,000	100	70938-5
C-24-175-9-L	175	24.0	.345	Natural	3/16 - 7	-	500	50	70948-4
C-32-175-9-L	175	32.0	.345	Natural	3/16 - 9-3/8	-	500	50	70951-4
C-36-175-9-L	175	36.0	.345	Natural	3/16 - 10-3/4	-	500	50	70952-1
C-48-175-G-L	175	48.0	.345	Grey	3/16 - 15	-	500	50	70959-0

Bulk Packed									
Nylon Catalog Number	Tensile Str.	Length Inches	Width Inches	Color	Bundle Diameter	Military Spec	Per Case	Per Bag	NAED UPC No. 632591-
C-4-18-9-M	18	4.1	.100	Natural	1/16-7/8	M53367-4-9	25,000	1000	70955-2
C-5-40-9-M	40	5.6	.146	Natural	1/16-1 3/8	M53367-5-0	20,000	1000	70960-6
C-7-50-9-M	50	7.5	.190	Natural	1/8-1 3/4	M53367-1-9	10,000	1000	70971-2
C-7-50-0-M	50	7.5	.190	Black	1/8-1 3/4	M53367-7-0	10,000	1000	70974-3
C-8-40-9-M	40	8.7	.146	Natural	1/16 - 2-1/8	-	10,000	1000	70982-8

MOUNTING HOLE TIES AND PADS



Mounting Pads



Catalog Number	Color	Length Inches	Height Inches	Width Inches	Slot	Per Case	Per Bag	NAED UPC No. 632591-
3/4 Mounts	Natural	.75	.205	.75	.50	1000	100	70829-6
1 Mounts	Natural	1.00	.215	1.00	.70	1000	100	70764-0

Stainless Steel Ties



Catalog Number	Material	Tensile Strength	Length Inches	Bundle Diameter	Per Case	Per Bag	NAED UPC No. 632591-
C-8-18-SS-C	302/304 Stainless	100	7.9	3/16-2	1000	100	70980-4
C-14-18-SS-C	302/304 Stainless	100	14.2	3/16-4	1000	100	70941-5
C-20-18-SS-C	302-304 Stainless	100	20.4	3/16-6	1000	100	70947-7
C-26-18-SS-C	302/304 Stainless	100	26.8	3/16-8	1000	100	70950-7

Mounting Hole Ties



Catalog Number	Tensile Strength	Length Inches	Width Inches	Color	Bundle Diameter	Screw Hole	Per Case	Per Bag	NAED UPC No. 632591-
C-4-18-MH-9-C	18	4.5	.100	Natural	1/16-5/8	No. 4	10,000	100	70957-6
C-5-30-MH-9-C	30	5.9	.140	Natural	1/16-1 1/4	No. 8	10,000	100	70963-7
C-7-50-MH-9-C	50	8.0	.192	Natural	1/16-1 3/4	No. 10	10,000	100	70975-0
C-7-50-MH-9-M	50	8.0	.192	Natural	1/16-1 3/4	No. 10	10,000	1000	70976-7
C-9-50-MH-9-C	50	9.7	.192	Natural	1/16-1 3/4	No. 10	10,000	100	70983-5
C-11-50-MH-9-C	50	11.2	.192	Natural	1/16-3	No. 10	5,000	100	70933-0
C-14-50-MH-9-C	50	15.0	.192	Natural	1/16-4	No. 10	5,000	100	70945-3
C-14-120-MH-9-C	120	15.0	.300	Natural	1/16-4	No. 10	2,000	100	70939-2

Black Ultraviolet Mounting Hole Tie



Catalog Number	Tensile Strength	Length Inches	Width Inches	Color	Bundle Diameter	Screw Hole	Per Case	Per Bag	NAED UPC No. 632591-
C-4-18-MH-O-C	18	4.5	.100	Black	1/16-5/8	No. 4	10,000	100	70956-9
C-5-30-MH-O-C	30	5.9	.140	Black	1/16-1 1/4	No. 8	10,000	100	70964-4
C-7-50-MH-O-C	50	8.0	.192	Black	1/16-1 3/4	No. 10	10,000	100	70972-9
C-11-50-MH-O-C	50	11.2	.192	Black	1/16-3	No. 10	5,000	100	70935-4
C-14-50-MH-O-C	50	15.0	.192	Black	1/16-4	No. 10	5,000	100	70946-0
C-14-120-MH-O-C	120	15.0	.300	Black	1/16-4	No. 10	2,000	100	70940-8

Tension Gun for 18-50 Lb. Plastic Cable Ties



Catalog Number	Per Box	Description
A-200	1	Tension for 18-50 lb. ties



MISCELLANEOUS

Wire Marker Books



Catalog Number	Legend	Material	NAED UPC No. 632591-
MB1	0-9	Tyvek	71420-4
MB2	A-Z & 0-15	Tyvek	71421-1
MB3	1-45	Tyvek	71422-8
MB8	46-90	Tyvek	71423-5
MB-Blanks	Blanks	Tyvek	71419-8

Oxide Inhibitor

For use with all aluminum conductors



Catalog Number	Carton Description	Carton Quantity	NAED UPC No. 632591-
CO-OX-4	4 Oz. Bottle	12	71201-9
CO-OX-8	8 Oz. Bottle	12	71202-6

CMCT-12 HAND OPERATION COMPRESSION TOOL



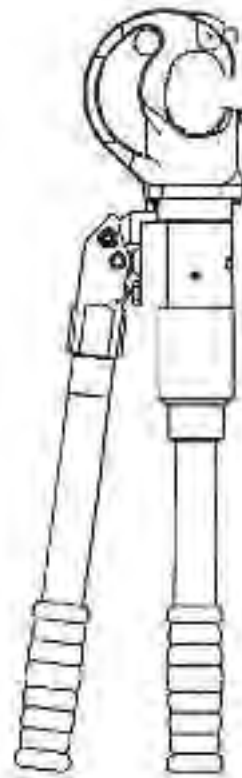
CMCT-12 Hand Operated Compression Tool

- Lightweight and portable.
- Two speed pumping system for rapid ram advance.
- High strength fiberglass handles with a C-shaped head with 180° rotation for ease of accessibility.
- 12 ton capacity.
- Twist handle release and a high pressure safety relief valve.
- Push button system for ease of die insertion and removal.
- Optional covered C-head for mechanical protection and optional tool bag or carrying case.
- Can be used with either Burndy or T&B "U" or shell-type dies.
- Two-year warranty.

Crimping Capacity	COPPER	-No. 8 stranded through 500 MCM grounding terminals and splices.
		-No. 8 stranded through 250 MCM grounding taps and 3/4" ground rod.
		-No. 8 stranded through 500 MCM insulated and uninsulated terminals.
	Aluminum	-No. 8 stranded through 750 MCM terminals and splices.
	ACSR	-No. 6 stranded through 556.6 26/7 stranding.

Safety Notice

All rubber or PVC covered tools have been designed to provide protection against accidental brush contact with energized lines. However, it is the user's responsibility to adhere to all safety procedure and regulations as specified by OSHA, other regulatory bodies and employer safety practices and procedures. GALVAN Electrical, Inc. is not responsible for injuries that can occur to users of this equipment.



Catalog Number	Crimping Force	Operating Pressure	Jaw Opening	Dimensions		Head Width	Tool Weight	NAED UPC No. 632591-
				Length	Depth			
CMCT-12	13.1 US tons 11.9 Metric tons	10,000 PSI 70,000 kPA (700 Bar)	.950 in 6.98 cm	23.25 59.05cm	2.75 in 6.98cm	4.75 in 12.07cm	13.60 lbs. 6.16 kg.	71191-3

Notes

*Call factory for price



CMIT MECHANICAL INDENT TOOL

CMIT Mechanical Indent Tool

- High strength, lightweight aluminum body.
- No dies required.
- High strength fiberglass handles.
- Designed to easily crimp a range of connectors without the use of hydraulic tools.
- Adjustable indenter to cover a wide array of wire ranges and wire types of copper and aluminum lugs and splices.
- Indenter adjusting screw is protected to prevent damage from accidental dropping.
- Calibrated scale for copper connectors with wire range sizes.
- Nest and indenter made of high strength steel for durability.
- Optional tool bag.
- One-year warranty.



Catalog Number	Crimping Capacity	Dimensions			Tool Weight	NAED UPC No. 632591-
		Length	Depth	Width		
CMIT	4/0 AWG, 107.07mm Aluminum Cable	23.63 in.	1.15 in.	4.50 in	5.50 lbs.	71192-0
	250 MCM, 126.5mm Copper Cable	60.00cm	3.81cm	11.43cm	2.50k.g	

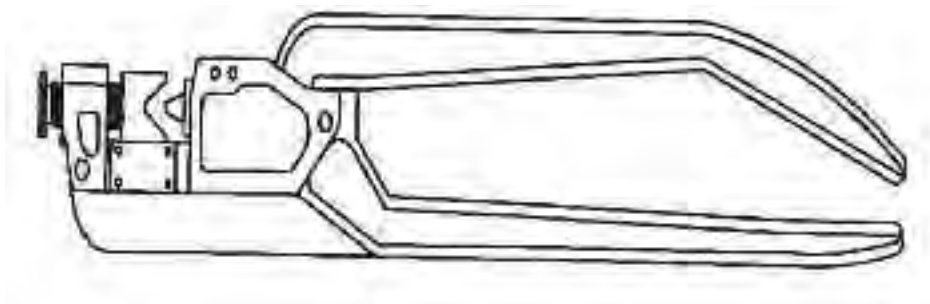
Notes

*Call factory for price



CCIT Economical Mechanical Indent Tool

- High strength, steel body.
- No dies required.
- Designed to easily crimp a range of fittings without the use of hydraulic tools.
- Adjustable indentor to cover a wide array of wire ranges and wire types of copper and aluminum lugs and splices.
- Calibrated scale for aluminum connectors with wire range from 250 MCM down to #8 str.
- Calibrated scale for copper connectors with wire range from 4/0 AWG down to #8 str.
- Nest and indentor made of high strength steel for durability.
- One-year warranty.



Catalog Number	Crimping Capacity	Dimensions			Tool Weight	NAED UPC No. 632591-71095-4
		Length	Depth	Width		
CCIT	4/0 AWG, 107.07mm Aluminum Cable	23.00 in.	1.15 in.	4.50 in.	6.05 lbs.	
	250 MCM, 126.5 mm Copper Cable	60.00cm	3.81cm	11.43cm.	2.75kg.	

Notes

*Call factory for price



DIE SETS

Die Sets

Aluminum/Copper Splices and Terminals

Die Set	Conductor Range	Burndy Index No.	Color Code
3-9023	4/0 GA. AL, 300 MCM CU	298	WHITE
3-9025	250 MCM AL, 350 MCM CU	324	RED
3-9027	300 MCM AL, 400 MCM CU	470	BLUE
3-9029	350 MCM AL, 500 MCM CU	299	BROWN
3-9031	400 MCM AL, 600 MCM CU	472	GREEN
9-9037	8 GA. AL, 6 MCM CU	374	BLUE
3-9076	6 GA. AL, 4 MCM CU	346	GRAY
3-9078	4 GA. AL, 1 MCM CU	375	GREEN
3-9080	2 CA. AL, 1/0 MCM CU	348	PINK

Die Sets

Aluminum Splices and Terminals

Die Set	Conductor Range	Burndy Index No.	Color Code
3-9017	1/0 GA.	296	TAN
3-9019	2/0 GA.	297	OLIVE
3-9021	3/0 GA.	467	RUBY
3-9033	500 MCM	300	PINK
3-9082	1 GA.	471	GOLD

Notes

*Call factory for price



Die Sets

Copper Splices and Terminals

Galvan Industries, Inc. disclaims all express or implied warranties including without limitation warranties implied under law such as, but not limited to, warranties of merchantability and warranties of fitness for a particular purpose. GALVAN will not be liable for any loss, damage, cost of repairs, incidental or consequential damages of any kind, whether or not based upon warranty express or implied, contract, negligence, or strict liability arising in connection with the design, manufacture, sale, use or repair of the products or of the engineering designs supplied to Buyer. In no event will GALVAN be liable to buyer for more than the purchase price of the products sold hereunder.

Die Set	Conductor	Burndy Index No.	Color Code
3-9039	5 & 6 GA.	7	BLUE
3-9041	4 GA.	8	GRAY
3-9043	3 GA.	9	WHITE
3-9045	2 GA.	10	BROWN
3-9047	1 GA.	11	GREEN
3-9049	1/0 GA.	12	PINK
3-9051	2/0 GA.	13	BLACK
3-9053	3/0 GA.	14	ORANGE
3-9055	4/0 GA.	15	PURPLE
3-9057	250 MCM	16	YELLOW
3-9059	300 MCM	17	WHITE
3-9061	350 MCM	18	RED
3-9063	400 MCM	19	BLUE
3-9065	500 MCM	20	BROWN
3-9067	600 MCM	22	GREEN
3-9069	750 MCM	24	BLACK

Notes

*Call factory for price

*For use in 14-Ton Tools.

Copper Tooling Information

Installation Tooling for Copper Connections

CC, CCB, CCBL, CCL, CSL and CSS Copper Connectors

Copper Only Cable Size	Die Color Code	Blackburn		MY29-3 Hand Indent	Burndy		T&B		Sq. D VC-7 Hand Hydr.
		NRG2808 Hand Indent	JB12B Hand Hydr.		Y35-39 Hand Hydr.	Die Index	TBM12-M Hand Hydr.	TBM15M Elect. Hydr.	
8AWG	RED	X(1)	B71CH	X(1)	U8CRT	-	21(1)	21(1)	-
6AWG	BLUE	X(1)	B73CH	X(1)	U6CRT(2)	374	24(2)	24(2)	X(1)
4AWG	GREY	X(1)	B74CH	X(1)	U4CRT(2)	346	29(2)	29(2)	X(1)
3AWG	GREY	X(1)	B74CH	X(1)	U6CABT(2)	346	29(2)	29(2)	X(1)
2AWG	BROWN	X(1)	B75CH	X(1)	U2CRT(2)	10	33(2)	33(2)	X(1)
1AWG	GREEN	X(1)	B05CH	X(1)	U1CRT(2)	375	37(2)	37(2)	X(1)
1/0AWG	PINK	X(1)	B06CH	X(1)	U2CRT(2)	348	42H(2)	42H(2)	X(1)
2/0AWG	BLACK	X(1)	B72CH	X(1)	U26RT(1)	13	45(2)	45(2)	X(2)
3/0AWG	ORANGE	X(1)	B08CH	X(1)	U27RT(1)	14	50(2)	50(2)	X(2)
4/0AWG	PURPLE	X(1)	B09CH	X(1)	U28RT(1)	15	54H(2)	54H(2)	X(2)
250MCM	YELLOW	X(1)	B26CH	X(1)	U29RT(1)	16	62(2)	62(2)	X(2)
300MCM	WHITE	-	B10CH	-	U30RT(2)	298	66(2)	66(2)	X(2)
350MCM	RED	-	B10CHI	-	U31RT(2)	324	71H(2)	71H(2)	X(2)
400MCM	BLUE	-	B11CH	-	U32RT(2)	470	76(2)	76(2)	X(2)
500MCM	BROWN	-	B12CH	-	U34RT(2)	299	87H(2)	87H(2)	X(2)
600MCM	GREEN	-	B36CH	-	U36RT(2)	472	94(3)	94(3)	-
750MCM	BLACK	-	B39CH	-	U39RT(3)	300	106H(3)	106H(3)	-
1000MCM	WHITE	-	6044RT	-	U44RT(3)	473	125H(3)	125H(3)	-

Notes

Also can be crimped using the CMCT-12

tool with either Burndy or T&B dies.

X denotes

Adjustable Tool with non-removable dies.

() figures indicate number of crimps.



DUAL-RATED ALUMINUM

Installation Tooling for Aluminum Connectors

CLA, 2CLA, 2CLAB, 2CLAT and SA Dual-Rated Aluminum Connectors

Connector		Blackburn			CMC		Burndy		T&B		Sq.D
Cable Size	Die Color Code	NRG2508 Hand Indent	OD58 Hand Tool	JV12B Hand Hydr.	CMIT Hand Indent	MY29-3 Hand Tool	Y35-39 Hand Hydr.	Die Index	TBM8S Elect. Tool	TBM15 Hand Hydr.	VC6FT Hand Hydr
8AWG	BLUE	X(1)	1/4	B73CH(1)	X(2)	X(1)	U8CABT(1)	-	13461	24(1)	X(1)
6AWG	GRAY	X(2)	5/16	B74CH(2)	X(2)	X(2)	U6CABT(2)	346	13491	29(2)	X(1)
4AWG	GREEN	X(2)	P	B05CH(2)	X(2)	X(2)	U4CABT(2)	375	13462	37(2)	X(1)
2AWG	PINK	X(2)	1/2	B06CHI(2)	X(2)	X(2)	U2CART(2)	348	13462	42H(2)	X(2)
1AWG	GOLD	X(2)	1/2-1	B06CHI(2)	X(2)	X(2)	U1CART(2)	471	13464	45(2)	X(2)
1/0AWG	TAN	X(2)	9/16	B08CH(2)	X(2)	X(2)	U25ART(2)	296	13464	50(2)	X(2)
2/0AWG	OLIVE	X(2)	5/8-1	B09CH(2)	X(2)	X(2)	U26ART(2)	297	13464	54H(2)	X(2)
3/0AWG	RUBY	X(2)	688	B26CH(2)	X(2)	X(2)	U27ART(2)	467	13464	60(2)	X(2)
4/0AWG	WHITE	X(2)	781	B10CHI(2)	X(2)	X(2)	U28ART(2)	298	13465	66(2)	X(2)
250MCM	RED	X(2)	840	B11CH(2)	X(2)	-	U29ART(2)	324	13466	71H(2)	X(2)
300MCM	BLUE	-	-	B61EA(2)	-	-	U30ART(2)	470	-	76(2)	X(2)
350MCM	BROWN	-	-	B12CHI(2)	-	-	U31ART(2)	299	13468	87H(2)	X(3)
400MCM	GREEN	-	-	B80EA(3)*	-	-	U32ART(3)	472	-	94(3)	-
500MCM	PINK	-	-	B80EA(3)*	-	-	U34ART(3)	300	-	99H(3)	-
600MCM	BLACK	-	-	B20AH(3)*	-	-	U36ART(3)	473	-	106(3)	-
750MCM	YELLOW	-	-	-	-	-	U39ART(3)	936	-	115(3)	-
1000MCM	BROWN	-	-	-	-	-	-	-	-	125H(3)	-

Notes

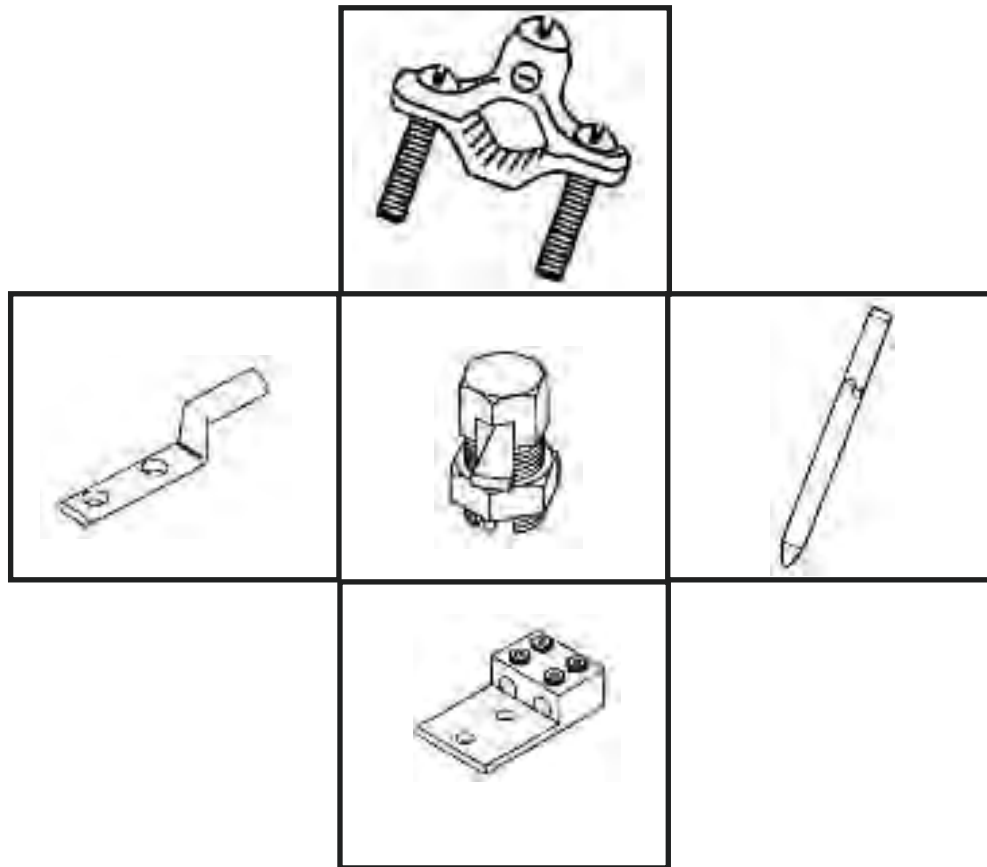
Also can be crimped using the CMCT-12 tool with either Burndy or T&B dies.

X denotes Adjustable Tool with non-removable dies.

() figures indicate number of crimps.



Cross Reference is to be used as an aid in selecting products from GALVAN that are similar to the products of other manufacturers. All Information should be verified by the user.





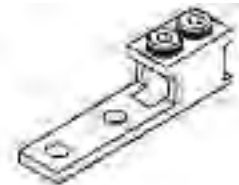
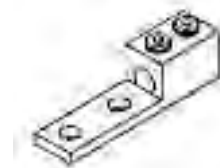
GALVAN CATALOG CROSS REFERENCE SECTION



Galvan / Comec	IlSCO	NSI	Penn Union	Burndy	Greaves	Homac	T&B	Galvan / Comec discontinued
LA-2	TA-2	2T	LA-2	KA-2U	-	-	ADR-2	AB-70
LA-6	TA-6S	-	LA-6	KA-6U	-	-	ADR6	AB-50
LA-1/0	TA-0	0T	LA-0	KA-25U	A-1/0	-	ADR11	AB-112
LA-2/0	TA-2/0	-	LA-2/0	KA-26U	A-2/0	-	ADR21	AB-125
LA250	TA-250	250T	LA-250	KA-29U	A-250	A-250	ADR25	AB-250
LA-300	TA-300	300T	-	KA-30U	A-300	A-300	ADR30	AB-300
LA-350	TA-350	350T	LA-350	KA-31U	A-350	A-350	ADR35	AB-350
LA-500	TA-500	500T	LA-500	KA-34U	A-500	A-500	ADR50	AB-500
LA-600	TA-600	600T	LA-600	KA-36U	A-600	A-600	ADR60	AB-600
LA-630	-	BS400T	-	-	-	-	ADR6004	LA-630
LA-800	TA-800	800T	LA-800	KA-40U	A-800	A-800	ADR80	LA-800
LA-800S	TA-800-S	-	-	-	-	A-800S	-	LA-800S
LA-1000	TA-1000	-	LA-1000	KA-44U	A-1000	-	ADR-99	AB-1000



Galvan / Comec	IlSCO	NSI	Penn Union	Burndy	Greaves	Homac	T&B	Galvan / Comec discontinued
L1M2-350	TA-350-2NS	350L2	LA-350-2	-	A-350N	-	ADR35-12	A1B2-350
L1M2-600	TA-600-2NS	600L2	LA-600-2	KA-36U-2N	A-600N	-	-	A1B2-600



Galvan / Comec	IlSCO	NSI	Penn Union	Burndy	Greaves	Homac	T&B	Galvan / Comec discontinued
L1D2-350	TA-350-2N	-	LLA2-350-S1	KKA-31U-2N	-	-	-	A1B2-350-2
L1D2-600	TA-600-2N	600LL2	-	KA36U-2N	-	-	ADR60-12D	A1B2-600-2
L1D2-800	TA-800-2N	800LL2	-	-	A800-N	-	ADR80-12D	L1D2-800
L1D2-1000	TA-1000-2N	1000LL2	LLA-1000-S1	-	-	-	ADR99-12D	A1B2-1000-2

GALVAN CATALOG CROSS REFERENCE SECTION



Galvan / Comec	IlSCO	NSI	Penn Union	Burndy	Greaves	Homac	T&B	Galvan / Comec discontinued
DLA-1/0	AU-0	-	L2A-0	K2A-25U	AA-1/0	-	ADR11-21	2AB-112
DLA-2/0	AU-2/0	2-2/0T	-	K2A26U	AA-2/0	-	ADR21-21	2AB-125
DLA-250	AU-250	2-250T	L2A-250	K2A-29U	AA-250	AD-250D	ADR25-21	2AB-250
DLA-350	AU-350	2-350T	LA-350	K2A-31U	AA-350	-	ADR35-21	2AB-350
DLA-600	AU-600	2-600T	L2A-600	K2A-36U	AA-600	AD-600D	ADR60-21	2AB-600
DLA-800	AU-800	2-800T	L2A-800	-	AA-800	-	ADR80-21	DLA-800
DLA-1000	AU-1000	2-1000T	L2A-1000	K2A-44U	AA-1000	-	ADR99-21	2AB-1000



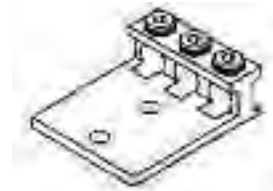
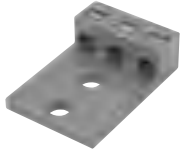
Galvan/Comec	IlSCO	NSI	Penn Union	Burndy	Greaves	Homac	T&B	Galvan / Comec discontinued
L2M2-350	AU-350-2N	2-350L2	L2A-350-2	KA-31U-2N	AA-600N	-	ADR35-22	2AB2-350



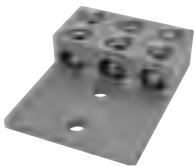
Galvan/Comec	IlSCO	NSI	Penn Union	Burndy	Greaves	Homac	T&B	Galvan / Comec discontinued
L2D2-350	AU-350-2N	-	-	KK2A-31U-2N	-	-	-	L2D2-350
L2D2-600	AU-600-2N	-	-	KK2A-36U-2N	-	-	ADR60-22D	A2B2-600
L2D2-800	AU-800-2N	-	-	KK2A-40U-2N	AA-800N	-	ADR80-22D	L2D2-800
L2D2-1000	AU-1000-2N	-	-	KK2A-44U-2N	AA-1000N	-	ADR99-22D	L2D2-1000



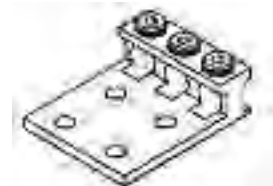
GALVAN CATALOG CROSS REFERENCE SECTION



Galvan / Comec	IlSCO	NSI	Penn Union	Burndy	Greaves	Homac	T&B	Galvan / Comec discontinued
L3M2-1/0	T3A2-0	-	L3A-1/0-2	K3A-25U-2	-	-	ADR11-32	3AB2-112
L3M2-3/0	T3A2-3/0N	-	L3A-250-2	K3A-27U-2N	-	-	ADR31-32	L3M2-3/0
L3M2-250	T3A2-250N	-	L3A-250-2	K3A-29U-2N	AAA-250N	-	ADR25-32	3AB2-250
L3M2-350	T3A2-350N	-	L3A-350-2	K3A-31U-2N	AAA-350N	-	ADR35-32	3AB2-350
L3M2-500	-	-	L3A-500-2	K3A-36U-2N	-	-	ADR50-32	3AB2-500

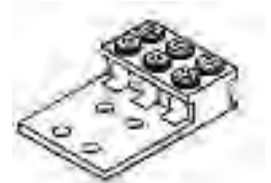
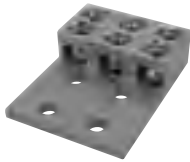


Galvan / Comec	IlSCO	NSI	Penn Union	Burndy	Greaves	Homac	T&B	Galvan / Comec discontinued
L3D2-600	T3A2-600N	-	-	KK3A-36U-2N	AAA-600N	-	ADR60-32D	A3B2-600
L3D2-800	T3A2-800N	-	L3A-800-2	K3A-40U-2N	AAA-800N	-	ADR80-32	L3D2-800
L3D2-1000	T3A2-1000N	-	-	KK3A-44U-2N	AAA-1000N	-	ADR99-32	L3D2-1000

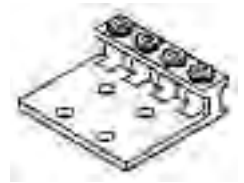
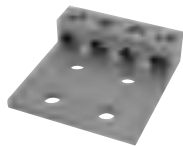


Galvan / Comec	IlSCO	NSI	Penn Union	Burndy	Greaves	Homac	T&B	Galvan / Comec discontinued
L3M4-1/0	T3A4-0	-	-	K3A-25U-4	-	-	ADR11-34	L3M4-1/0
L3M4-3/0	T3A4-3/0N	-	-	K3A-27U-4N	-	-	ADR31-34	L3M4-3/0
L3M4-250	T3A4-250N	-	L3A-250-4	K3A-29U-4N	AAA-250N	-	ADR25-34	3AB4-250
L3M4-350	T3A4-350N	-	L3A-350-4	K3A-31U-4N	AAA-350N	-	ADR35-34	3AB4-350
L3M4-500	T3A4-500N	-	L3A-500-4	-	-	-	ADR50-34	3AB4-500

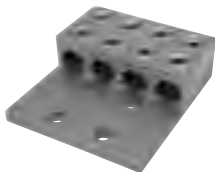
GALVAN CATALOG CROSS REFERENCE SECTION



Galvan / Comtec	IlSCO	NSI	Penn Union	Burndy	Greaves	Homac	T&B	Galvan / Comtec discontinued
L3D4-600	T3A4-600N	3-600LL4	-	KK3A-36U-4N	-	ATA344-600N	ADR60-34D	A3B4-600
L3D4-800	T3A4-800N	3-800LL4	L3A-800-4	KK3A-40U-4N	AAA-800N	-	ADR80-34	L3D4-800
L3D4-1000	T3A4-1000N	3-1000LL4	-	KK3A-44U-4N	AAA-1000N	-	ADR99-34	A3B4-1000



Galvan / Comtec	IlSCO	NSI	Penn Union	Burndy	Greaves	Homac	T&B	Galvan / Comtec discontinued
L4M4-250	T4A4-250N	4-250L4	LA4M4-250	K4A-29U-4N	AAAA-250N	AT4A4-250N	ADR25-44	4AB4-250
L4M4-350	T4A4-350N	4-350L4	LA4M4-350	K4A-31U-4N	AAAA-350N	AT4A4-350N	ADR35-44	4AB4-350



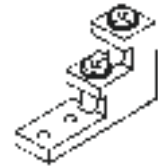
Galvan / Comtec	IlSCO	NSI	Penn Union	Burndy	Greaves	Homac	T&B	Galvan / Comtec discontinued
L4D4-600	T4A4-600N	4-600LL4	LA4M4-600	KK4A-36U-4N	-	AT4A4-600N	ADR60-44D	A4B4-600
L4D4-800	T4A4-800N	4-800LL4	LA4M-800	KK4A-40U-4N	AAAA-800N	-	ADR80-44D	L4D4-800
L4D4-1000	-	4-100L4	-	K4A40U-4N	-	-	ADR99-44D	A4B4-1000



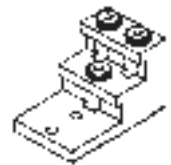
GALVAN CATALOG CROSS REFERENCE SECTION



Galvan / Comtec	Ilisco	NSI	Penn Union	Burndy	Greaves	Homac	T&B	Galvan / Comtec discontinued
SG-250	SG-250	-	LLA2-250-S1	-	-	-	ADR125-12S	SG-250
SG-350	SG-350	-	LLA2-350-S1	-	-	-	ADR35-12S	ABSG-350
SG-500	SG-500	-	LLA2-500-S1	-	-	-	ADR50-12S	ABSG-500
SG-800	SG-800	-	LLA2-750-S1	-	-	-	ADR80-12S	ABSG-750
SG-1000	SG-1000	-	LLA2-1000-S1	-	-	-	ADR99-12DS	ABSG-1000

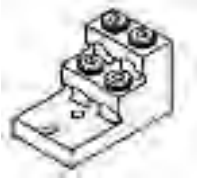


Galvan / Comtec	Ilisco	NSI	Penn Union	Burndy	Greaves	Homac	T&B	Galvan / Comtec discontinued
PV2-300	PB2-300	-	-	K11A-30U	-	-	ASL-30-21	PV2-300
2ABV-500	PB2-500	-	-	K11A-34U-2	-	-	-	PV2-500
2ABV-600	PB2-600	-	PB2-600	K11A-36U-2	AQ2-600	-	ASL-60-22	PV2-600
2ABV-750	PB2-750	-	PB2-750	K11A-39U-2	AQ2-750	-	ASL-75-22	PV2-750



Galvan / Comtec	Ilisco	NSI	Penn Union	Burndy	Greaves	Homac	T&B	Galvan / Comtec discontinued
3ABV-500	-	-	-	-	-	-	ASL60-21	PV3-500
3ABV-600	PB3-600	-	PB3-600	K21A-36U-2	AQ3-600	-	ASL-60-32	PV3-600
3ABV-750	-	-	PB3-750	-	AQ3-750	-	ASL-75-32	PV3-750

GALVAN CATALOG CROSS REFERENCE SECTION



Galvan / Comec	Ilisco	NSI	Penn Union	Burndy	Greaves	Homac	T&B	Galvan / Comec discontinued
4ABV-500	-	-	-	-	-	-	-	PV4-500
4ABV-600	PB4-600	-	PB4-600	K22A-36U-2	AQ4-600	-	ASL-60-42	PV4-600
4ABV-750	PB4-750	-	PB4-750	K22A-39U-2	AQ4-750	-	ASL-75-42	PV4-750



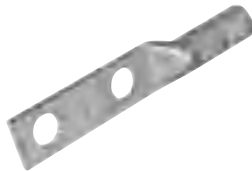
Galvan / Comec	Ilisco	NSI	Penn Union	Burndy	Greaves	Homac	T&B	Galvan / Comec discontinued
6ABV-500	-	-	-	-	-	-	-	PV6-500



Galvan / Comec	Ilisco	NSI	Penn Union	Burndy	Greaves	Homac	T&B	Galvan / Comec
SR-0	SPA-0	-	SR-0	AMS-0	ABS-1/0	-	ASR-1108	SR-0
SR-2	SPA-2	-	SR-2	AMS-2	ABS-2	-	ASR-0214	SR-2
SR-250	SPA-250	-	SR-250	AMS-250	ABS-250	-	ASR-2506	SR-250
SR-350	SPA-350	-	SR-350	AMS-350	ABS-350	-	ASR-3504	SR-350
SR-500	SPA-500	-	SR-500	AMS-500	ABS-500	-	ASR-6041	SR-500
SR-750	SPA-750	-	SR-750	AMS-750	ABS-750	-	-	SR-750
SR-1000	SPA-1000	-	-	AMS-1000	-	-	-	SR-1000



GALVAN CATALOG CROSS REFERENCE SECTION



Galvan / Comtec	IlSCO	NSI	Penn Union	Burndy	Greaves	Homac	T&B	Galvan / Comtec
2CLA1/0-38	2ACL-1/0	AL1/0N	BLUA-1/0D1	YA25A5	-	-	ATL102-38	2CLA1/0-38
2CLA2/0-50	2ACL-2/0	AL2/0N	BLUA-2/0D	YA26A3	AL2/0-N	-	ATL202	2CLA2/0-50
2CLA3/0-50	2ACL-3/0	AL3/0N	BLUA-3/0D	YA27A5	AL3/0-N	-	ATL302	2CLA3/0-50
2CLA4/0-50	2ACL-4/0	AL4/0N	BLUA-4/0D	YA28A5	AL4/0-N	-	ATL402	2CLA4/0-50
2CLA250-50	2ACL-250	AL250N	BLUA-025D	YA29A3	AL250-N	-	ATL2502	2CLA250-50
2CLA300-50	2ACL-300	AL300N	BLUA-0300D	YA30A3	AL300-N	-	ATL3002	2CLA300-50
2CLA350-50	2ACL-350	AL350N	BLUA-035D	YA31A3	AL350-N	-	ATL3502	2CLA350-50
2CLA400-50	2ACL-400	AL400N	BLUA-400D2	YA32A3	AL400-N	AL-400 NTN D	ATL4002	2CLA400-50
2CLA500-50	2ACL-500	AL500N	BLUA-050D2	YA34A3	AL500 N	AL-500 NTN D	ATL5002	2CLA500-50
2CLA600-50	2ACL-600	AL600N	BLUA-060D2	YA36A3	AL600-N	AL 600 NTN D	ATL6002	2CLA600-50
2CLA750-50	2ACL-750	AL750N	BLUA-075D1	YA39A5	AL750-N	AL 750 NTN D	ATL7502	2CLA750-50

GALVAN CATALOG CROSS REFERENCE SECTION



Galvan / Comec	IlSCO	NSI	Penn Union	Burndy	Greaves	Homac	T&B	Galvan / Comec
A-2	-	APS02	-	-	-	-	APS02	A-2
A-4	AK-4/0	APS04	-	-	-	-	APS04	A-4
A-6	AK-6	APS06	-	KSA6	-	-	APS06	A-6
A-1/0	AK-1/0	APS11	SWA-7	KSA-1/0	-	-	APS11	A-1/0
A-2/0	AK-2/0	APS21	SWA-8	KSA-2/0	-	-	APS21	A-2/0
A-250	AK-4/0	-	SWA-10	KSA-4/0	-	-	APS41	A-250
A-350	AK-350	APS350	SWA-11	KSA-350	-	-	APS350	A-350
A-500	AK-500	APS500	SWA-12	KSA-500	-	-	APS500	A-500



Galvan / Comec	IlSCO	NSI	Penn Union	Burndy	Greaves	Homac	T&B	Galvan / Comec
K-1	-	-	-	-	-	-	1H	K-1
K-2	IK-2	N-2	S-2	KS-23	A-7	E 2 D	2H	K-2
K-3	IK-3	-	-	-	-	-	3H	K-3
K-4	IK-4	N-4	S-4	KS-20	A-5	E 4 D	4H	K-4
K-6	IK-6	N-6	S-6	KS-17	A-3	E 6 D	6H	K-6
K-8	IK-8	N-8	S-8	KS-15	A-2	-	8H	K-8
K-10	IK-10	N-10	S-10	KS-90	A-1	-	9H	K-10
K-1/0	IK-1/0	N-1/0	S-1/0	KS-25	A-10	E 1/0 D	10H	K-1/0
K-2/0	IK-2/0	N-2/0	S-2/0	KS-26	A-11	E2/0 D	20H	K-2/0
K-3/0	IK-3/0	N-3/0	-	KS-27	-	E 3/0 D	-	K-3/0
K-250	IK-250	N-250	S-4/0-250	KS-29	A-14	-	40H	K-250
K-350	IK-350	N-350	S-350	KS-31	A-15	E 350 D	350M	K-350
K-500	IK-500	N-500	S-500	KS-34	A-16	-	500M	K-500
K-750	IK-750	N-750	S-750	KS-39	A-17	E 750 D	750M	K-750
K-1000	IK-1000	N-1000	S-1000	KS-44	A-18	E 1000 D	1000M	K-1000



GALVAN CATALOG CROSS REFERENCE SECTION



Galvan / Comec	IlSCO	NSI	Penn Union	Burndy	Greaves	Homac	T&B	Galvan / Comec
S-1	SK-2	-	SW-6	KSU-23	-	-	1HPS	S-1
S-2	SK-3	-	SW-6	KSU-22	A-8-SP	-	2HPS	S-2
S-4	SK-4	N-4SP	SW-5	KSU-20	A-5-SP	-	4HPS	S-4
S-6	SK-6	N-6SP	SW-4	KSU-17	A-3-SP	E6-GP D	6HPS	S-6
S-1/0	SK-1/0	N-1/0SP	SW-7	KSU-25	A-10-SP	-	10HPS	S-1/0
S-2/0	SK-2/0	N-2/0SP	SW-8	KSU-26	A-11-SP	-	20HPS	S-2/0
S-3/0	SK-3/0	N-3/0SP	-	-	-	-	30HPS	S-3/0
S-250	SK-4/0	-	SW-9A	KSU-29	A-14-SP	-	40HPS	S-250
S-350	SK-350	N-350-SP	SW-11	KSU-31	A-15-SP	-	350HPS	S-350
S-500	SK-500	N-500-SP	SW-12	KSU-34	A-16-SP	-	500HPS	S-500
S-750	-	N-750-SP	SW-13	-	A-17-SP	-	750HPS	S-750
S-1000	-	N-1000-SP	SW-14	-	A-18-SP	-	1000HPS	S-1000



Galvan / Comec	IlSCO	NSI	Penn Union	Burndy	Greaves	Homac	T&B	Galvan / Comec
SA-1	AS-1	ASC1T	BCUA-1	YS1CA1	ASC1T	-	ASP1	SA-1
SA-2	AS-2	ASC2T	BCUA-2	YS2CA1	ASC2T	-	ASP2	SA-2
SA-4	AS-4	ASC4T	BCUA-4	YS4CA1	ASC4T	E4-GP D	ASP4	SA-4
SA-6	AS-6	ASC6T	BCUA-6	YS6CA1	ASC6T	E 6-GP D	ASP6	SA-6
SA-8	AS-8	-	BCUA-8	-	-	E 8 GP D	ASP8	SA-8
SA-250	AS-250	ASC250T	BCUA-025	YS29A1	ASC250T	-	ASP250	SA-250
SA-300	AS-300	ASC300T	BCUA-030	YS30A1	ASC300T	-	ASP300	SA-300
SA-350	AS-350	ASC350T	BCUA-035	YS31A1	ASC350T	-	ASP350	SA-350
SA-400	AS-400	ASC400T	BCUA-040	YS32A1	ASC400T	-	ASP400	SA-400
SA-500	AS-500	ASC500T	BCUA-050	YS34A1	ASC500T	-	ASP500	SA-500
SA-600	AS-600	ASC600T	BCUA-060	YS36A1	ASC600T	-	ASP600	SA-600
SA-750	AS-750	ASC750T	BCUA-075	YS39A1	ASC750T	-	ASP750	SA-750
SA-1/0	AS-1/0	ASC1/0T	BCUA-1/0	YS25A1	ASC1/0T	E 1/0 GP D	ASP10	SA-1/0
SA-2/0	AS-2/0	ASC2/0T	BCUA-2/0	YS26A1	ASC2/0T	-	ASP20	SA-2/0
SA-3/0	AS-3/0	ASC3/0T	BCUA-3/0	YS27A1	ASC3/0T	-	ASP30	SA-3/0
SA-4/0	AS-4/0	ASC4/0T	BCUA-4/0	YS28A1	ASC4/0T	E 250 D	ASP40	SA-4/0

GALVAN CATALOG CROSS REFERENCE SECTION



Galvan / Comec	IISCO	NSI	Penn Union	Burndy	Greaves	Homac	T&B	Galvan / Comec
CC1-25	CRA-1-14	-	BLU-1S9	YA1C-L2	-	-	CTL1-14	CC1-25
CC1-31	CRA-1	-	BLU-1S	YA1C-L	-	-	CTL1-516	CC1-31
CC1-38	CRA-1-38	-	BLU-1S1	YA1C-L4	GL-138	-	CTL1-38	CC1-38
CC2-25	CRA-2	-	BLU-2S	YA2C-L2	-	-	CTL2-14	CC2-25
CC2-31	CRB-2	-	BLU-2S1	YA2C-L	GL-256	-	CTL2-516	CC2-31
CC2-38	CRC-2	-	BLU-2S2	YA2C-L4	GL-238	-	CTL2-38	CC2-38
CC4-19	CRA-4	-	BLU-4S	YA4C-L1	-	-	CTL4-10	CC4-19
CC4-25	CRB-4	-	BLU-4S1	YA4C-L	-	HL 4-14 D	CTL4-14	CC4-25
CC4-31	CRB-4-516	-	BLU-4S10	YA4C-L3	GL-456	-	CTL4-516	CC4-31
CC4-38	-	-	BLU-4S2	YA4C-L4	GL-438	-	CTL4-38	CC4-38
CC6-19	CRA-6	-	BLU-6S2	YA6C-L3	-	-	CTL6-516	CC6-19
CC6-25	CRB-6	-	BLU-6S1	YA6C-L	GL-614	-	CTL6-14	CC6-25
CC6-31	-	-	BLU-6S2	YA6C-L3	-	-	CTL6-516	CC6-31
CC6-38	-	-	-	-	-	-	CTL6-38	CC6-38
CC8-19	CRA-8	-	BLU-8S14	YA8C-L	GL-810	-	CTL8-10	CC8-19
CC8-25	-	-	BLU-8S15	YA8C-L1	GL-814	-	CTL8-14	CC8-25
CC8-31	-	-	BLU-8S16	YA8C-L2	-	-	CTL8-516	CC8-31
CC1/0-25	CRA-0-14	-	BLU-1/0S19	YA25-L2	-	-	54152TB	CC1/0-25
CC1/0-31	CRA-0	-	BLU-1/0S	YA25-L	-	-	CTL10-516	CC1/0-31
CC1/0-38	CRB-0	-	BLU-1/0S1	YA25-L4	GL-1038	HL 1/0-39 D	CTL10-38	CC1/0-38
CC1/0-50	-	-	-	-	-	-	CTL10-12	CC1/0-50
CC2/0-38	CRA-2/0	-	BLU-2/0S	YA26-L	GL-2038	HL 2/0-38 D	CTL20-38	CC2/0-38
CC2/0-50	-	-	BLU-2/0S4	YA26-L6	GL-2048	-	CTL20-12	CC2/0-50
CC3/0-38	CRA-3/0	-	BLU-3/0S	YA27-L4	GL-3038	HL 3/0-38 D	CTL30-38	CC3/0-38
CC3/0-50	CRB-3/0	-	BLU-3/0S1	YA27-L	GL-3048	HL 3/0-48 D	CTL30-12	CC3/0-50
CC4/0-38	CRA-4/0	-	BLU-4/0S	YA28-L4	GL-4038	HL 4/0-38 D	CTL40-38	CC4/0-38
CC4/0-50	CRB-4/0	-	BLU-4/0S1	YA28-L	GL-4048	HL 4/0-48 D	CTL40-12	CC4/0-50
CC250-38	-	-	BLU-025S2	YA29-L4	-	HL 250-38 D	CTL250-38	CC250-38
CC250-50	CRA-250	-	BLU-025S	YA29-L	GL-25048	-	CTL250-12	CC250-50
CC300-50	CRA-300	-	BLU-030S	YA30-L	GL-30048	-	CTL300-12	CC300-50
CC300-62	-	-	-	YA30-L7	-	-	-	CC300-62
CC350-50	CRA-350	-	BLU035S	YA31-L	GL-35048	-	CTL350-12	CC350-50
CC350-62	-	-	BLU-035S3	YA31-L7	-	-	-	CC350-62
CC400-50	CRA-400	-	BLU-040S	YA32-L	GL-40048	-	CTL400-12	CC400-50
CC400-62	CRA-4/0	-	BLU-4/0S	YA28-L4	-	-	CTL400-58	CC400-62



GALVAN CATALOG CROSS REFERENCE SECTION

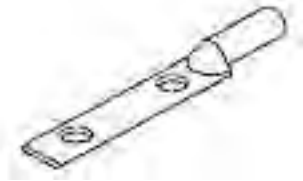


Galvan / Comec	IlSCO	NSI	Penn Union	Burndy	Greaves	Homac	T&B	Galvan / Comec
CC500-50	CRA-500	-	BLU-050S2	YA34-L6	GL-50048	-	CTL500-12	CC500-50
CC500-62	CRA-500	-	BLU-050S	YA34-L	-	HL 500-58 D	CTL500-58	CC500-62
CC600-62	CRA-600	-	BLU-060S	YA36-L	-	-	CTL600-58	CC600-62
CC700-62	CRA-700	-	-	YA38-L	-	-	-	CC700-62
CC750-62	CRA-750	-	BLU-075S	YA39-L	GL-75058	-	CTL750-58	CC750-62
CC1000-75	-	-	BLU-100S4	-	GL-10058	-	CTL1000-58	CC1000-75



Galvan / Comec	IlSCO	NSI	Penn Union	Burndy	Greaves	Homac	T&B	Galvan / Comec
CCB1-31	CRA-1L	-	BBLU-1S	YA1C	-	-	CTL1L-516	CCB1-31
CCB2-31	CRA-2L	-	BBLU-2S	YA2C	-	L2-38- D	CTL2L-516	CCB2-31
CCB4-25	CRB-4L	L-414	BBLU-4S	YA4C	-	-	CTL4L-14	CCB4-25
CCB6-25	CRB-6L	L-614	BBLU-6S	YA6C	L-614	-	CTL6L-14	CCB6-25
CCB8-25	CCL-8-10	-	-	-	-	L8-14 D	CTL8L-14	CCB8-25
CCB1/0-38	CRA-1/0L	L-1038	BBLU-1/0S	YA25	-	-	CTL10L-516	CCB1/0-38
CCB2/0-38	CRA-2/0L	L-2038	BBLU-2/0S	YA26	L-2038	-	CTL20L-38	CCB2/0-38
CCB2/0-50	-	L-2048	-	YA26-N	L-2048	-	-	CCB2/0-50
CCB3/0-50	CRB-3/0L	L-3048	BBLU-3/0S	YA27	L-3048	L3/0-48 D	CTL30L-12	CCB3/0-50
CCB4/0-50	CRB-4/0L	L-4048	BBLU-4/0S	YA28	L-4048	-	CTL40L-12	CCB4/0-50
CCB250-50	CRA-250L	L-25048	BBLU-025S	YA29-2LN	L-25048	L250-48 D	CTL250L-12	CCB250-50
CCB300-50	CRA-300L	L-30048	BBLU-030S	YA30	L-30048	-	CTL300L-12	CCB300-50
CCB350-50	CRA-350L	L-35048	BBLU-035S	YA31	L-35048	L350-48-D	CTL350L-12	CCB350-50
CCB400-50	CRA-400L	L-40048	BBLU-040S	YS32	L-40048	-	CTL400L-58	CCB400-50
CCB500-50	CRA-500L	L-50048	BBLU-050S	YA34	L-50048	-	CTL500L-58	CCB500-50
CCB600-62	CRA-600L	L-60058	BBLU-060S	YA36	-	-	CTL600L-58	CCB600-62
CCB750-62	CRA-750L	L-75058	BBLU-075S	YA39-2LN	L-75058	-	CTL750L-58	CCB750-62
CCB1000-62	CRA-1000L	L-10058	BBLU-100S	YA44	L-10058	-	CTL1000L-58	CCB1000-62

GALVAN CATALOG CROSS REFERENCE SECTION



Galvan / Comec	Ilisco	NSI	Penn Union	Burndy	Greaves	Homac	T&B	Galvan / Comec
CCBL1-31	CRA-1L2	-	BBLU-1D	YA1C-2	-	-	LCN1-516	CCBL1-31
CCBL2-31	CRB-2L2	-	BBLU-2D	YA2C-2	-	-	LCN2-516	CCBL2-31
CCBL4-25	CRB-4L2	L4N	BBLU-4D	YA4C-2	-	-	LCN4-14	CCBL4-25
CCBL6-25	CRB-6L2	-	BBLU-6D	YA6C-2	-	-	LCN6-14	CCBL6-25
CCBL8-25	-	-	-	-	-	-	LCN8-14	CCBL8-25
CCBL1/0-31	CRA-1/0L2	-	BBLU-1/0D	-	-	-	-	CCBL1/0-31
CCBL1/0-50	CRC-1/0L2	-	BBLU-1/0D3	YA25-2	-	-	LCN10	CCBL1/0-50
CCBL2/0-50	CRA-2/0L2	L20N	BBLU-2/0D	YA26-2N	L-20-N	L2/0-N	LCN-20	CCBL2/0-50
CCBL3/0-50	CRB-3/0L2	L30N	BBLU-3/0D	YA27-2N	L-30-N	L3/0-N D	LCN30	CCBL3/0-50
CCBL4/0-50	CRB-4/0L2	L40N	BBLU-4/0D	YA28-2N	L-40-N	L4/0-N	LCN-40	CCBL4/0-50
CCBL250-50	CRA-250L2	L250N	BBLU-025D	YA29-2N	L-250-N	L250-N	LCN-250	CCBL250-50
CCBL300-50	CRA-300L2	L300N	BBLU-030D	YA30-2N	L-300-N	L300-N	LCN-300	CCBL300-50
CCBL350-50	CRA-350L2	L350N	BBLU-035D	YA31-2N	L-350-N	L350-N	LCN-350	CCBL350-50
CCBL400-50	CRA-400L2	L400N	BBLU-040D	YA32-2N	L-400-N	L400-N	LCN-400	CCBL400-50
CCBL500-50	CRA-500L2	L500N	BBLU-050D	YA34-2N	L-500-N	L500-N D	LCN-500	CCBL500-50
CCBL600-50	CRA-600L2	L600N	BBLU-060D	YA36-2N	L-600-N	L600-N	LCN-600	CCBL600-50
CCBL750-50	CRA-750L2	L750N	BBLU-075D	YA39-2N	L-750-N	L750-N	LCN-75	CCBL750-50
CCBL1000-50	CRA-1000L2	L1000N	BBLU-100D	-	L-1000-N	L1000-N	LCN-1000	CCBL1000-50



Galvan / Comec	Ilisco	NSI	Penn Union	Burndy	Greaves	Homac	T&B	Galvan / Comec
CF-25	SLU-25	DE703	SLU-25	KLU25	D-703	-	BTC-1014	CF-25
CF-35	SLU-35	DE704	SLU-35	KLU35	D-704	-	BTC-0614	CF-35
CF-70	SAU-70	DE711	SAU-70	-	D-711	-	-	CF-70
CF-90	SLU-70	DE705	SLU-70	KLU70	D-705	CB-70 D	BTC-0208	CF-90
CF-125	SLU-125	DE706	SLU-125	KLU125	D-706	CB-125 D	BTC-1102	CF-125
CF-175	SLU-175	DE713	SLU-175	KLU175	D-713	-	BTC-3104	CF-175
CF-225	SLU-225	DE707	SLU-225	KLU225	D-707	-	BTC-4102	CF-225
CF-300	SLU-300	DE710	SLU-300	KLU300	D-710	CB-300 D	BTC-3511	CF-300
CF-400	SLU-400	DE708	SLU-400	KLU400	D-708	CB-400 D	BTC-5011	CF-400
CF-650	SLU-650	DE709	SLU-650	KLU650	D-709	-	BTC-9960	CF-650

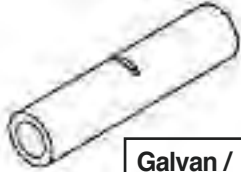


GALVAN CATALOG CROSS REFERENCE SECTION



Galvan / Comec	Ilsco	NSI	Penn Union	Burndy	Greaves	Homac	T&B	Galvan / Comec
CLA1-25	ACL-1	AL1-14	BLUA-1S1	YA1CA1	AL1-14	-	ATL-1-14	CLA1-25
CLA1-31	ACN-1	-	BLUA-1S3	-	-	-	ATL1-516	CLA1-31
CLA1-38	-	-	BLUA-1S	YA1CA1	-	-	ATL1-38	CLA1-38
CLA2-25	ACL-2	AL2-14	BLUA-2S3	YA2CA1	AL2-14	-	ATL2-14	CLA2-25
CLA2-31	ACN-2	-	BLUA-2S4	YA2CA1	-	-	ATL2-516	CLA2-31
CLA2-38	-	-	BLUA-2S	YA2CA3	-	-	ATL2-38	CLA2-38
CLA4-25	ACL-4	AL4-14	BLUA-4S3	YA4CA1	AL4-14	AL4-14-TND	ATL4-14	CLA4-25
CLA4-31	ACN-4	-	BLUA-4S2	YA4CA3	-	-	ATL4-516	CLA4-31
CLA4-38	-	-	-	-	-	-	ATL4-38	CLA4-38
CLA6-25	ACL-6	AL6-14	BLUA-6S	YA6CA1	AL6-14	AL6-14 TN D	ATL6-14	CLA6-25
CLA6-31	-	-	BLUA-6S2	-	-	-	-	CLA6-31
CLA6-38	-	-	-	-	-	-	ATL6-38	CLA6-38
CLA8-25	ACL-8	-	BLUA-8S	YA8CA3	AL8-14	-	ATL8-14	CLA8-25
CLA1/0-25	-	AL1/0-38	-	YA25A1	-	-	-	CLA1/0-25
CLA1/0-31	ACN-1/0	-	BLUA-1/0S3	YA25A1	AL1/0-38	-	ATL10-516	CLA1/0-31
CLA1/0-38	ACL-1/0	-	BLUA-1/0S*	YA25A3	-	-	ATL10-38	CLA1/0-38
CLA1/0-50	-	-	-	-	-	-	ATL10-12	CLA1/0-50
CLA2/0-31	-	AL2/0-38	-	YA26L	-	-	-	CLA2/0-31
CLA2/0-38	ACL-2/0	AL2/0-48	BLUA-2/0S6	YA26A6	AL2/0-38	-	ATL20-38	CLA2/0-38
CLA3/0-31	-	AL3/0-38	-	YA27A3	-	-	-	CLA3/0-31
CLA3/0-38	ACL-3/0	AL3/0-48	BLUA-3/0S2	YA27A1	AL3/0-38	-	ATL30-38	CLA3/0-38
CLA4/0-31	-	AL4/0-38	-	YA28A1	-	-	-	CLA4/0-31
CLA4/0-38	ACL-4/0	AL4/0-48	BLUA-4/0S2	YA28A1	AL4/0-38	-	ATL40-38	CLA4/0-38
CLA4/0-50	ACN-4/0	-	BLUA-4/0S	YA28A3	AL4/0-48	-	ATL40-12	CLA4/0-50
CLA250-50	ACL-250	AL250-48	BLUA-025S	YA29A1	AL250-48	-	ATL250-12	CLA250-50
CLA300-38	-	-	-	-	-	-	ATL300-38	CLA300-38
CLA300-50	ACL-300	AL300-48	BLUA-030S1	YA30A1	AL300-48	-	ATL300-12	CLA300-50
CLA350-50	ACL-350	AL350-48	BLUA-035S1	YA31A1	AL350-48	-	ATL350-12	CLA350-50
CLA400-50	-	AL400-48	BLUA-040S1	YA32A1	AL400-48	AL-400-48-TND	ATL400-58	CLA400-50
CLA500-50	ACL-500	AL500-48	BLUA-050S2	YA34A1	AL500-48	AL-500-48-TND	ATL500-12	CLA500-50
CLA600-62	ACL-600	AL600-48	BLUA-060S1	YA36A1	AL600-58	AL-600-58-TND	ATL600-58	CLA600-62
CLA750-62	ACL-750	AL750-58	BLUA-075S1	YA39A3	AL750-58	AL-750-58-TND	ATL750-58	CLA750-62

GALVAN CATALOG CROSS REFERENCE SECTION



Galvan / Comec	IlSCO	NSI	Penn Union	Burndy	Greaves	Homac	T&B	Galvan / Comec
CSL-1	CTL-1	-	BBCU-1	YS1C	C-1	-	CU1	CSL-1
CSL-2	CTL-2	C-2	BBCU-2	YS2C	C-2	C-2 D	CU2	CSL-2
CSL-4	CTL-4	C-4	BBCU-4	YS4C	C-4	C-4	CU4	CSL-4
CSL-6	CTL-6	C-6	BBCU-6	YS6C	C-6	C-6	CU6	CSL-6
CSL-8	CTL-8	-	-	YS8C	-	-	CU8	CSL-8
CSL-1/0	CTL-1/0	C-1/0	BBCU-1/0	YS25	C-1/0	C-1/0	CU10	CSL-1/0
CSL-2/0	CTL-2/0	C-2/0	BBCU-2/0	YS26	C-2/0	C-2/0	CU20	CSL-2/0
CSL-3/0	CTL-3/0	C-3/0	BBCU-3/0	YS27	C-3/0	C-3/0 D	CU30	CSL-3/0
CSL-4/0	CTL-4/0	C-4/0	BBCU-4/0	YS28	C-4/0	C 4/0 D	CU40	CSL-4/0
CSL-250	CTL-250	C-250	BBCU-025	YS29	C-250	C-250	CU250	CSL-250
CSL-300	CTL-300	C-300	BBCU-030	YS30	C-300	C-300	CU300	CSL-300
CSL-350	CTL-350	C-350	BBCU-035	YS31	C-350	C-350	CU350	CSL-350
CSL-400	CTL-400	C-400	BBCU-040	YS32	C-400	C-400	CU400	CSL-400
CSL-500	CTL-500	C-500	BBCU-050	YS34	C-500	C-500	CU500	CSL-500
CSL-600	CTL-600	C-600	BBCU-060	YS36	C-600	C-600	CU600	CSL-600
CSL-750	CTL-750	C-750	BBCU-075	YS39	C-750	C-750	CU750	CSL-750
CSL-1000	CTL-1000	C-1000	BBCU-100	YS44	C-1000	C-1000	CU1000	CSL-1000



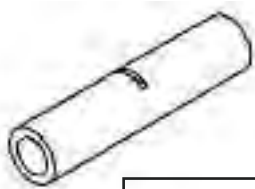
Galvan / Comec	IlSCO	NSI	Penn Union	Burndy	Greaves	Homac	T&B	Galvan / Comec
DCF-450	-	-	LU-2	-	-	DC-450D	-	DCF-450
DCF-600	-	-	LU-4	-	-	-	-	DCF-600
DCF-800	-	-	LU-6	-	-	-	-	DCF-800



Galvan / Comec	IlSCO	NSI	Penn Union	Burndy	Greaves	Homac	T&B	Galvan / Comec
CFS-25	SLS-25	-	-	KPA-8C	-	-	STC-1014	CFS-25
CFS-35	SLS-35	-	-	-	-	-	STC-0614	CFS-35
CFS-70	SAS-70	-	-	KPA-4C	-	CS-70 D	STC-0414	CFS-70
CFS-90	SLS-70	-	-	-	-	CS-90 D	STC-0208	CFS-90
CFS-125	SLS-125	-	-	KPA-25	-	CS-125 D	STC-1102	CFS-125
CFS-175	SLS-175	-	-	-	-	-	STC-3104	CFS-175
CFS-225	SLS-225	-	-	KPA-28	-	CS-225 D	STC-4102	CFS-225
CFS-300	SLS-300	-	-	-	-	CS-300 D	STC-3511	CFS-300
CFS-400	SLS-400	-	-	KPA-34	-	CS-400 D	STC-5011	CFS-400
CFS-650	SLS-650	-	-	-	-	-	STC-9960	CFS-650



GALVAN CATALOG CROSS REFERENCE SECTION



Galvan / Comec	Ilisco	NSI	Penn Union	Burndy	Greaves	Homac	T&B	Galvan / Comec
CSS-1	CT-1	SC-1	BCU-1	YS1C-L	SC-1	SC-1	CSP1	CSS-1
CSS-2	CT-2	SC-2	BCU-2	YS2C-L	SC-2	SC-2	CSP2	CSS-2
CSS-4	CT-4	SC-4	BCU-4	YS4C-L	SC-4	SC-4	CSP4	CSS-4
CSS-6	CT-6	SC-6	BCU-6	YS6C-L	SC-6	SC-6	CSP6	CSS-6
CSS-8	CT-8	SC-8	BCU-8	YS8C-L	SC-8	SC-8	CSP8	CSS-8
CSS-1/0	CT-1/0	SC-1/0	BCU-1/0	YS25-L	SC-1/0	SC-1/0	CSP10	CSS-1/0
CSS-2/0	CT-2/0	SC-2/0	BCU-2/0	YS26-L	SC-2/0	SC-2/0	CSP20	CSS-2/0
CSS-3/0	CT-3/0	SC-3/0	BCU-3/0	YS27-L	SC-3/0	SC-3/0	CSP30	CSS-3/0
CSS-4/0	CT-4/0	SC-4/0	BCU-4/0	YS38-L	SC-4/0	SC-4/0	CSP40	CSS-4/0
CSS-250	CT-250	SC-250	BCU-025	YS29-L	SC-250	SC-250	CSP250	CSS-250
CSS-300	CT-300	SC-300	BCU-030	YS30-L	SC-300	SC-300	CSP300	CSS-300
CSS-350	CT-350	SC-350	BCU-035	YS31-L	SC-350	SC-350	CSP350	CSS-350
CSS-400	CT-400	SC-400	BCU-040	YS32-L	SC-400	SC-400	CSP400	CSS-400
CSS-500	CT-500	SC-500	BCU-050	YS34-L	-	SC-500 D	CSP500	CSS-500
CSS-600	CT-600	SC-600	-	YS36-L	SC-600	SC-600	CSP600	CSS-600
CSS-700	CT-700	-	-	-	-	-	-	CSS-700
CSS-750	CT-750	SC-750	BCU-075	YS39-L	SC-750	SC-750	CSP750	CSS-750
CSS-1000	CT-1000	SC-1000	BCU-100	YS44-L	SC-1000	SC-1000	CSP1000	CSS-1000



Galvan / Comec	Ilisco	NSI	Penn Union	Burndy	Greaves	Homac	T&B	Galvan / Comec
FLC-4	CP-4	-	PLN-4	KA-4C	D-801	MLD 4 D	L70	FLC-4
FLC-8	CP-8	-	PLN-8	KA-8C	D-800	MLD 8 D	L35	FLC-8
FLC-1/0	CP-0	-	PNL-1/0	-	D-802	MLD 1/0 D	L125BB	FLC-1/0
FLC-250	CP-250	-	PNL-250	-	D-804	-	L250	FLC-250

GALVAN CATALOG CROSS REFERENCE SECTION



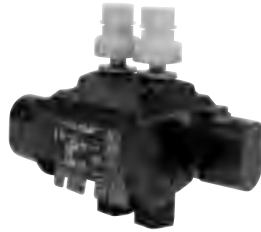
Galvan / Comec	llsco	NSI	Penn Union	Burndy	Greaves	Homac	T&B	Galvan / Comec
GP-1/0	GTA-0-0	GP-0	-	-	GP-1/0	-	GP-0	GP-1/0
GP-1/0-WC	GTA-0-0-W/C	GP-0WC	-	-	-	-	GP-0-WC	GP-1/0-WC
GP-2	GTA-2-2	GP-2	GTP-2	-	GP-2	-	GP-2	GP-2
GP-2-WC	GTA-2-2-WC	GP-2WC	-	-	-	-	GP-2-WC	GP-2-WC
GP-250	GTA-250-250	GP-250	GTP-250	KPU-29A-29C	GP-250	-	GP250	GP250
GP-250-WC	GTA-250-250-W/C	GP-250WC	-	-	-	-	GP-250-WC	GP-250-WC
GP-250-0	GTA-250-0	GP-250-0	GTP-250-0	KPU-29A-26C	-	-	GP-250-0	GP-250-0
GP-350	GTA-350-350	GP350	GTP-350	KPU-34A-26C	-	-	GP-350	GP-350
GP-350-WC	GTA-350-350-W/C	GP-350WC	-	-	-	-	GP-350-WC	GP-350-WC
GP-500	GTA-500-500	GP-500	GTP-500	KPU-34A-34C	-	-	GP-500	GP-500
GP-500-WC	GTA-500-500-W/C	GP-500WC	-	-	-	-	GP-500-WC	GP-500-WC
GP-750	GTA-750-500	GP-750	GTP-750	HPU-40A-26C	-	-	GP-750	GP-750
GP-750-WC	GTA-750-500-W/C	GP-750WC	-	-	-	-	GP-750-WC	GP-750-WC
GP-750-A	GTA-750-750	-	GTP-750-1	-	-	-	GP-750-1	GP-750-A



Galvan / Comec	llsco	NSI	Penn Union	Burndy	Greaves	Homac	T&B	Galvan / Comec
GT-1/0	GTT-0-0	GT-0	GTT-1/0	-	-	-	GT-0	GT-1/0
GT-1/0-WC	GTT-0-0-W/C	-	-	-	-	-	GT-0-WC	GT-1/0-WC
GT-2	GTT-2-2	GT-2	GTT-2	-	-	-	GT-2	GT-2
GT-2-WC	GTT-2-2-W/C	-	-	-	-	-	-	GT-2-WC
GT-250	GTT-250-250	GT-250	GTT-250	-	-	-	GT-250	GT-250
GT-250-WC	GTT-250-250-W/C	-	-	-	-	-	GT-250-WC	GT-250-WC
GT-250-0	GTT-250-0	GT-250-0	GTT-250-0	-	-	-	GT-250-0	GT-250-0
GT-350	GTT-350-350	GT-350	GTT-350	-	-	-	GT-350	GT-350
GT-350-WC	-	-	-	-	-	-	GT-350-WC	GT-350-WC
GT-500	GTT-500-500	GT-500	GTT-500	-	-	-	GT-500	GT-500
GT-500-WC	-	-	-	-	-	-	GT-500-WC	GT-500-WC
GT-750	GTT-750-500	GT-750	GTT-750	-	-	-	GT-750	GT-750
GT-750-WC	-	-	-	-	-	-	GT-750-WC	GT-750-WC



GALVAN CATALOG CROSS REFERENCE SECTION



Galvan / Comec	IlSCO	NSI	Penn Union	Burndy	Greaves	Homac	T&B	Galvan / Comec
IPC-1/0-2	IPC-1/0-2	-	IPC-1/0-2	BIPC 1/0-2	-	-	IPC1102	NHT1102
IPC-350-350	IPC-350-350	-	IPC-350-350	BIPC 350-350	-	-	IPC3535	NHT3535
IPC-4/0-2/0	IPC-4/0-2/0	-	IPC-4/0-1/0	BIPC 4/0-1/0	-	-	IPC4111	NHT4111
IPC-500-4/0	IPC-500-4/0	-	IPC-500-4/0	BIPC 500-4/0	-	-	IPC5041	NHT5041

GALVAN CATALOG CROSS REFERENCE SECTION



Galvan / Comec	Ilisco	NSI	Penn Union	Burndy	Greaves	Homac	T&B	Galvan / Comec
SNB350-12	NB350-12	1012M	SNB350-12	-	-	-	-	SNB350-12
SNB350-24	NB350-24	1024M	SNB350-24	-	-	-	-	SNB350-24
SNB350-30	NB350-30	1030M	SNB350-30	-	-	-	-	SNB350-30
SNB350-36	NB350-36	1036M	SNB350-36	-	-	-	-	SNB350-36
SNB350-42	NB350-42	1042M	SNB350-42	-	-	-	-	SNB350-42



Galvan / Comec	Ilisco	NSI	Penn Union	Burndy	Greaves	Homac	T&B	Galvan / Comec
TC-1/0	GTC-0	-	GTC-1/0	-	-	-	TC-10	TC-1/0
TC-2	GTC-2	-	GTC-2	-	-	-	TC-2	TC-2
TC-250	GTC-250-350	-	GTC-250	-	-	-	TC-250	TC-250
TC-350	GTC-250-350	-	GTC-350	-	-	-	TC-350BB	TC-350
TC-500	GTC-500	-	GTC-500	-	-	-	TC-500	TC-500
TC-750	GTC-750-500	-	GTC-750	-	-	-	TC-750	TC-750



GALVAN CATALOG CROSS REFERENCE SECTION



Copper

Galvan	ERICO	Hubbell	Joslyn
3754	613842	-	-
3755	613852	-	-
3756	613862	-	-
3758	613880	-	-
5005	611255	-	-
5006	611265	-	J8326
5008	611285	C611380	J8328
5008L	611380	C611380	-
5010	611205	C611300	J8330
5010L	611300	C611300	-
6255	N/A	C615855	J8335
6255G10	615850		-
6256	N/A		J8336
6256G10	615860		-
6258-5M	615885	C615885	-
6258	615880	C615880	J8338
6258G13	615883	C615883	-
6260	615800	C615800	J8340
6262	615812	-	-
7508	613480	C613480	J8348
7510	613400	C613400	J8350
1010	614400	-	J8370



Sectional

Galvan	ERICO	Hubbell	Joslyn
5008S	631180		-
5008LS	631380	C631380	-
5010LS	631300	C631300	-
6258S	635880	C635880	J9158
6258G13S	635883	C635883	J9158-13
6260S	635800	C635800	J9160
7508S	633480	C633480	J9168
7510S	633400	C633400	J9170
1010S	634400	-	J9190



Galvanized

Galvan	ERICO	Hubbell/ Chance	Joslyn
GR3755P	-	-	-
GR5005	-	8565	J5315
GR5006	-	8566	J5316
GR5008	-	8568	J5318
GR6255F	811350	-	-
GR6256F	815860	8576	J5326
GR6258(UL)	N/A	-	-
GR6258F	815880	8578	J5328
GR6258FP	815889	-	-
GR6250F	815800	8580	-
GR7508F	813480	8618	J5338
GR7510F	813400	8620	J5340
GR1010F	814400	-	-



Stainless Steel



Galvan	ERICO	Joslyn
S6255S*	-	-
S6256	-	-
S6258	685880	-
S6260	685800	-
S6260S*	685880S	-
S6212	-	-
S7510	683400	-
S7510S*	683400S	-
S1010	-	-
S1010S*	-	-

Galvan	ERICO	Joslyn
GRC-58G	GCC58	J26512
GRC-34G	-	-

Galvan	ERICO	Joslyn
GRC-58SS	-	-
GRC-34SS	-	-

Galvan	ERICO	Joslyn
GRC-58SST	GSC58	-
GRC-34SST	-	-

Galvan	ERICO	T&B	Hubbell/ Chance	Joslyn
50-C	CR12	50C	-	-
50-LC	CR12S	50LC	CTC12	J-9180
60-C	CR58	60C	CTC58	J9182
70-C	CR34	70C	CTC34	J9183
80-C	CR100	80C	-	-

Galvan	ERICO	T&B	Hubbell/ Chance	Joslyn
50-TC	CC12F	-	CCC12	-
60-TC	CC58	60CNT2	CCC58	-
70-TC	CC34	70CNT	CCC34	-



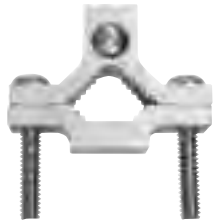
GALVAN CATALOG CROSS REFERENCE SECTION



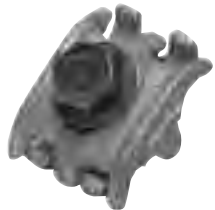
Galvan	ERICO	T&B	Penn Union	Hubbell/Chance	Joslyn
50-DS	DS12	50DS	-	-	-
50-LDS	DS12S	50LDS	P50DS	CTDH 12	J-9185
60-DS	DS58	60DS	P60DS	CTDH 58	J-9186
70-DS	DS34	70DS	P70DS	CTDH 34	J-9187
80-DS	DS1	80DS	P80DS	-	-



Galvan	ERICO	T&B	Penn Union	Hubbell/Chance	Burndy
G-3	CP38	G3	-	-	-
G-4	CP12	G4	CEB-1	GC-4	GRC12
G-5* (RUS)	CP58	G5	CEB-2	GC-5	GRC58
G5P (plated)	S68	-	-	-	-
G-6	CP34	G6	CEB-3	GC-6	GRC34
JAB12H	HDC12	JAB12H	CAB-1	GC-103-01	GRD12
JAB58H	HDC58R	JAB58H	CAB-2	GC-103-02	GRD58
JAB58HH	HDC58	-	-	-	-
JAB34H	HDC34	JAB34H	CAB-3	GC-103-03	GRD34
JAB1H	HDC1	JAB1H	-	-	-



Galvan	ERICO	T&B	Penn Union
GC	CWP1J	J	8100
GCJ	CWP1J	JJR	-
DCG	ZWP1J	BJ1	-
JD	CWP1JU	JD	-
JD2	CWP2JU	J2D	-
GC2	CWP2J	J2BB	8101
G2124	CWP4J	J2124	8102
G4146	CWP6J	J6	-
K1	-	K1	8201
K2	-	K2	8200
K3	-	K3	-
KUL	-	KUL	-



Galvan	ERICO	T&B	Joslyn
CC5006SH	-	-	-
CC5004	-	-	-
CC5002	-	-	-
H1	-	-	-
H2	-	-	-



Galvan	ERICO	T&B	Joslyn
CC167P	-	-	CC167P



GALVAN CATALOG CROSS REFERENCE SECTION



Galvan	Penn Union	Maclean	Fargo
VC-6			GC5006
VC-6SH	FF-6	BVC-6	GC5006SH
VC-4	FF-4	BVC4	GC5004
VC-2	—	BVC2	GC5002
VC-2S	FF-2	BVC2S	GC5002S
VC-20	—	BVC20	GC5020
VC-20S	FF-2/0	BVC-20C	GC5020S
VC-40	FF-4/0	BVC40	GC5040



Galvan	Blackburn /T&B	Penn Union	Burndy	Anderson	Dossert
GTC13	GTC13	GSM-2	GBM26	GC140-01	GFM-13
GTC14	GTC14	GSM-3	GBM29	GC-140-02	GFM-25
GTC23	GTC23	GM-2	GB26	GC141-01	GF13
GTC24	GTC24	GM-3	GB29		GF25



Galvan	Blackburn /T&B	Penn Union	Burndy	Anderson	Dossert
TTC-2	TTC2	HGSE-020	EQC632C	GTCL-34A	
TTC-3	TTC3	HGSE-C1		GTCL-23A	TGC8-50
TTC-4	TTC4				
TTC-2P	TTC2P				
TTC-3P	TTC3P	GSE-C1TN		GTC23A-TP	TGC8-50SN
TTC-4P	TTC4P				



Galvan	Blackburn /T&B	Penn Union	Burndy	Anderson	Dossert
GP100	GP100	5575			



GALVAN CATALOG CROSS REFERENCE SECTION



Galvan	Blackburn /T&B	Anderson	Fargo	Chance	Kearney	Utilco	Maclean
CC1520	HLC2108	BC-2/0	GH100	S1520-CC	3532	BHLC-1	C1520
CC1520P	HLC2108P		GH100P	1520-GP	3532-4		C1520P
CC1520AP	HLC23108AP						C1520AP
CC1520AP9	HLC2108AP9			1520-AGP			C1520AP9
CC1530	HLC3974	BH-4	GH101	1530-CC	3537	BHLC-2	C1530
CC1530P							C1530P
CC1530AP	HLC3974AP			S1530-AC			C1530A
CC1530AP9	HLC3974AP9		GH101P	1530-AGP	3537-4		C1530AP9



Galvan	Blackburn /T&B	Penn Union	Burndy	Anderson	Dossert
PAA4	PAA4	PCAA-10	UC25R2R	LC51A	AC100
PAA5	PAA5			LC51C	AC101
PAA6	PAA6			LC52A	
PAA10	PAA10		UC32R	LC81A	AC103
PAA12	PAA12	PAA-17		LC53A	AC102
PAA400	PAA400			LC66A	
PAA29	PAA29	PCAA-10-BF			
PAA339	PAA339	PCAA-10-BF			
PAA49	PAA49	PCAA-10-BF		LC51A-XB	
PAA59	PAA59		UC25RS	LC51C-XB	
PAA69	PAA69			LC52A-XB	
PAA109	PAA109		UC28RS		
PAA129	PAA129	PCAA-17-BF			
PAA4009	PAA4009				



Galvan	Blackburn /T&B	Anderson
PAC 345	PAC 345	LC511, LC522
PAC7	PAC7	LC811
PAC3459	PAC3459	LC511XB, LC522XB
PAC7	PAC7	LC811XB

**NEC 2008 250.52.A**

(5) Rod and Pipe Electrodes. Rod and pipe electrodes shall not be less than 2.44 m (8 ft) in length and shall consist of the following materials.

- (a) Grounding electrodes of stainless steel and copper or zinc-coated steel shall be at least 15.87 mm (5/8 in.) in diameter, unless listed and not listed than 12.70 mm (1/2 in.) in diameter.

250.56 Resistance of Rod, Pipe and Plate Electrodes. A single electrode consisting of a rod, pipe, or plate that does not have a resistance to ground of 25 ohms or less **shall be augmented by one additional electrode** of any of the types specified by 250.52(A) (4) through (A) (8). Where multiple rod, pipe, or plate electrodes are installed to meet the requirements of this section, they shall not be less than 1.8 m (6 ft) apart.

FPN: The paralleling efficiency of rods longer than 2.5 m (8 ft) is improved by spacing greater than 1.8 m (6 ft).



TERMS AND CONDITIONS

1. Definitions. "Seller" means GALVAN INDUSTRIES, INC.; "Buyer" means the company, person or other entity who is the purchaser of the Goods; "Goods" means any goods or materials ordered and sold pursuant to the terms and conditions set forth herein.

2. Price. Unless otherwise stated, price of the Goods shall be the price in effect at the date and time of shipment. Seller reserves the right to adjust price based on volume purchases; any discounts allowed for volume purchases will be in the Seller's sole discretion. Price does not include any sales, use, excise or similar taxes which shall be added to the price of the Goods and shall be the responsibility of Buyer. Unless otherwise stated, minimum order is \$125.00 (excluding freight) on any single order. Each shipment will be separately invoiced.

3. Payments Terms. Terms of payment are net thirty (30) days. Interest on late payments shall be applicable at the rate of one and one-half percent (1.5%) per month or an annual percentage rate of eighteen (18%) per annum. In addition, Buyer shall be obligated for Seller's reasonable attorneys' fees that may be incurred by Seller to collect any sums due Seller hereunder. Seller reserves the right to apply any payments received from Buyer to any outstanding invoice of Seller in Seller's sole discretion.

4. Freight. The purchase price of the Goods shall be F.O.B. shipping point with respect to orders of \$2000 or more to a single destination. If Buyer specifies a more costly routing and/or handling than would be normally applicable, or if priority shipping is requested, total shipping charges are chargeable to Buyer regardless of freight allowance terms. In situations of "prepay and add" Galvan is unable to provide a copy of the actual freight bill due to agreements with our carriers regarding rate disclosure confidentiality.

5. Delivery.

(a) Seller's place and point of delivery shall be deemed to be delivery to a carrier at Seller's plant in Harrisburg, N.C., or such other designated shipping point designated by Seller. If Buyer fails to furnish complete shipping directions to Seller within a reasonable time of placing the order, Seller, in Seller's discretion, may make necessary shipping arrangements with a carrier selected by Seller, the cost of which shall be paid by Buyer.

(b) If and to the extent a delivery date is stated, it is the estimated delivery date only. All accepted orders, whether or not delivery dates are specified thereon, shall be subject to delays or failures in manufacture or delivery due to causes beyond the control of Seller or carrier. Buyer's obligations shall continue notwithstanding any delay in delivery, provided if performance by Seller is prevented in whole or in part for a period of three (3) consecutive months, then in such event Seller or Buyer (provided Buyer is not responsible for the delay) may cancel any order that has not been shipped as of such date.

(c) If Buyer is unable for any reason to accept delivery of the Goods according to the mutually established schedule, Seller at its option and after three (3) days written notice to Buyer may place the Goods in storage, in which event Buyer shall pay any and all storage or other related costs. If Buyer fails to accept any delivery or part thereof, then Seller may at its option treat such failure as a breach of this Agreement and exercise any and all remedies available to it pursuant to the terms and conditions set forth herein or available to it as a matter of law.

6. Credit. Seller's obligations are at all times subject to Seller's approval of Buyer's credit standing. Upon request, Buyer shall furnish Seller such credit information as may be customary and as may be reasonably requested by Seller. Seller, at its discretion, reserves the right to require payment in advance or C.O.D. and/or otherwise modify credit terms. If at any time Buyer is past due with respect to amounts due Seller, Seller at its option (without liability or prejudice to any other remedies), may decline to ship, or stop any Goods in transit, until such time Seller receives payment in full of all amounts owing to it by Buyer or otherwise receives assurances satisfactory to Seller of such payment.

7. Risk of Loss. Risk of loss or damage to the Goods shall be solely that of Buyer upon delivery to a carrier for shipment; any loss or damage subsequent to such delivery shall not be the responsibility of Seller, provided further any such loss shall not release Buyer from Buyer's obligation to pay for the Goods. Any claim for damage or loss in transit must be asserted by Buyer against the carrier.

8. Warranty. Seller warrants that the Goods will conform to the description stated herein subject to tolerances and variations consistent with current trade practices, testing and inspections methods. Seller makes no other warranties hereunder, expressed or implied. Seller specifically disclaims any implied warranties of merchantability or fitness for a particular purpose.

9. Claims

(a) Buyer shall inspect the Goods immediately upon receipt. Any claim that the Goods have been damaged or otherwise do not conform must be made to Seller in writing within ten (10) days of receipt of such Goods by Buyer. All claims for defective or non-conforming Goods must be submitted in writing to Galvan Industries, Inc., accompanied with a copy of the signed bill-of-lading noting the damage/shortages, and any other information (photos, etc.) supporting your claim. PO Box 369, Harrisburg, NC 28075. In the absence of such notice, the Goods shall be deemed to be accepted by Buyer.

(b) With respect to any valid claims properly submitted hereunder, Buyer's exclusive remedy and Seller's sole liability shall be limited to Seller repairing or replacing Goods that do not conform to specifications, or at Seller's sole option refunding the purchase price of the Goods. In no event shall Seller have any liability to damages in connection with the sale of the Goods in an amount exceeding the purchase price of the Goods sold. Seller shall have no liability for any consequential, special or indirect damages.

(c) Claims for quantity deviations or unit pricing errors are deemed waived unless submitted in writing within thirty (30) days of notice of invoice.

10. Quotations. Quotations, based on plans and specifications, are Seller's interpretation of the requirements and include only the material described and listed on the quotation unless otherwise stated. Quotations will be in writing and unless otherwise specified will remain in effect for a period of thirty (30) days from issue date. Formal written purchase orders for work covered by any quotation submitted must be received within forty-five (45) days from the date of quotation. Prices and inventory classifications are subject to changes without notice, and are those in effect at the time of shipment.

11. Errors. Galvan reserves the right to correct at any and all times any errors and omissions relating to any component or item upon which a purchase order may be based, including, but not limited to, clerical or stenographic errors or omissions as may relate to quotations, price, catalog and other materials supplied by Galvan, or other terms and conditions as reasonably determined by Seller.

12. Returns. Goods may be returned for credit upon request and upon Seller's approval for return authorization. Any returned items are subject to reasonable restocking charges which unless otherwise agreed to by Seller shall be deemed to be twenty-five percent (25%) of the price of the Goods returned. Any returned items must be in saleable condition, in the original standard packages, and conform to current catalog descriptions. All returned material is to be shipped to seller freight prepaid.

Unless otherwise stated, these terms and conditions govern the purchase and sale of the Goods. All terms and conditions, including price, are subject to change without notice as to any Goods not shipped as of the effective date of such change.

12. Cancellation. Orders received and accepted by Seller may not be cancelled or changed subsequent to delivery, prior to that date such orders received and accepted by Seller with the written permission of Seller. Any cancellation or change shall be subject to applicable charges for labor, material, and other costs actually incurred by Seller.

13. Seller's Remedies. If Buyer cancels this Agreement prior to shipment for any reason, without Seller's consent, Buyer shall pay Seller for all costs and expenses incurred by Seller, including the cost of all work executed or performed; any special engineering costs and commitments made by Seller prior to the time of cancellation; and all other incidental and storage costs incurred prior to resale.

14. Binding Nature. These terms and conditions shall be binding upon the parties hereto, their successors and assigns.

15. Authority. Any person, employee or agent otherwise acting on behalf of Buyer hereunder shall be deemed to have full authority to act on behalf of Buyer which Seller may rely on exclusively without further inquiry.

16. Governing Law. This Agreement shall be construed in accordance with and governed by laws of the state of North Carolina.



Galvan Industries, Inc.

Electrical Products Division
www.galvanelectrical.com

P.O. Box 369, 7320 Millbrook Road, Harrisburg, NC 28075
Phone: 704-455-5102 • Fax: 704-455-5215

Galvan Industries, Inc.

Electrical Products Catalog

8th Edition

G008