

NEESE

RAINWEAR

INDUSTRIAL PROTECTIVE RAINWEAR



VINYL LINE • POLYURETHANE • SYNTHETIC RUBBER • ECONOMY LINE



J
Jacket 30" long, snap front, storm flap.



SJ
Jacket 30" long, snap front, storm flap. Snaps on collar accommodate hood.



AJ
Jacket 30" long, snap front, storm flap. All coats available with snaps on collar or attached hood.



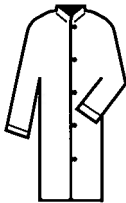
ET
Elastic waist trousers.



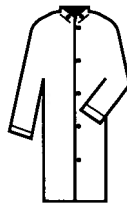
BT
Trousers, bib style, chest high, elastic suspenders.



BTF
Trousers, bib style, chest high, elastic suspenders, with fly.



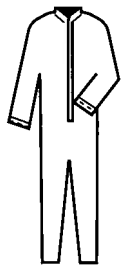
C
Coat 48" long, storm flap.



SC
Coat 48" long, storm flap. Snaps on collar accommodate hood.



AC
Coat 48" long, storm flap. All coats available with snaps on collar or attached hood.



CA
Coveralls, zipper front with storm flap, snap front.



ACA
Coveralls, zipper front with storm flap, snap front. Snaps on collar to accommodate hood.



P
Poncho with attached hood



H
Hood



HA
Hat (Available in 35 fabric only)

Neese Guarantee:

All garments are guaranteed to be free from defects in workmanship and materials for one year from date of purchase.

Proper care:

All fabrics are easily cleaned with a mild detergent, warm water and a sponge. In a machine, use a medium water temperature not to exceed 120°. For best results, air drying is recommended.

| | Small | Medium | Large | X-Large | 2X-Large | 3X-Large | 4X-Large | 5X-Large | 6X-Large |
|--------------|-------|--------|-------|---------|----------|----------|----------|----------|----------|
| Chest | 36/38 | 40/42 | 44/46 | 48/50 | 52/54 | 56/58 | 60/62 | 64/68 | 70/72 |
| Waist | 32/34 | 36/38 | 40/42 | 44/46 | 48/50 | 52/54 | 54/56 | 58/60 | 62/64 |

Rainwear sized generously to fit over clothing.



UNIVERSAL 36 (not pictured)

Tough, lightweight protection in a coating of PVC/Nylon/PVC which will not crack or peel in temperatures of -30°F to 120°F. Electronically welded seams for maximum protection. Flame-retardant fabric that meets NFPA-701 Standards. Resists abrasion, aging, sunlight, tears and snags.

SIZES: S-6XL

yellow, black, green, grey, white, fluorescent orange, orange

HYDRO-TEC 35 SUIT ▼

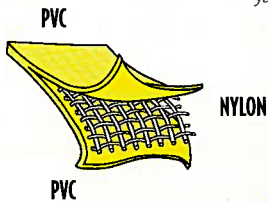
The HT 35 was designed specifically for industrial water blasting, steam cleaning, and mining applications. Same fabric as Universal 35 and includes the unique features of adjustable collar with take-up tabs, storm flap with inner snaps and hook and loop closure. Attached hood jacket. Bib style, chest high trousers with take-up tabs on cuffs. Double-stitched and taped seams.

UNIVERSAL 35 ▼

Tough, lightweight protection in a coating of PVC/Nylon/PVC which will not crack or peel in temperatures of -30°F to 120°F. Double-stitched and taped seams. Flame-retardant fabric that meets NFPA-701 Standards. Resists abrasion, aging, sunlight, tears and snags.

SIZES: S-6XL

yellow, black, green, grey, white, orange, fluorescent orange



Sou'wester Hat

The back brim comes over collar to prevent water from running down the neck.



S-6XL

yellow, black, green, grey, white, orange, fluorescent orange



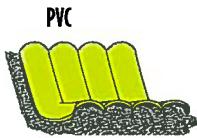
DURA-QUILT 56



A 13 oz. ribbed PVC/ Polyester fabric that is extremely tough but flexible. The non-woven polyester substrate dissipates moisture. A comfortable, rugged suit with electronically welded seams.

SIZES: S-6XL

yellow, green



POLYESTER

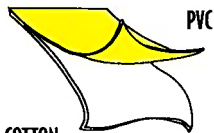
DURA-LIGHT 236



A general purpose suit with a high quality PVC coating on a flexible fabric blend. Provides excellent abrasion resistance and flexibility. Electronically welded seams.

SIZES: S-6XL

yellow, orange



COTTON

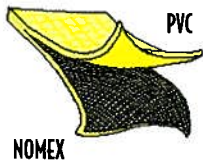




DURA-SAFE-20



A PVC/Nomex rainsuit that meets utility industry standards. Durable 10.6 oz/yd Federal Test Method Standard 191 Method 5903.1, NFPA-1977 Radiant Reflective Test, NFPA-1971 Thermal Shrinkage, NFPA-701 Flame Resistance.



SIZES: S-6XL

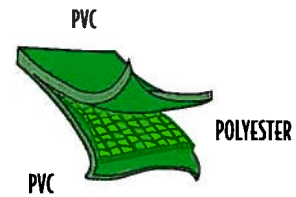
 yellow, orange



ACID SUIT 96



Heavyweight 13 oz. PVC/Polyester knit coated on both sides. The term "acid suit" denotes the unique construction of the garment, with double welded seams and storm flap to conceal the dialectric snaps. Flame retardant.



SIZES: S-6XL

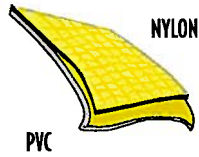
 green, red, olive drab





SPORTY 77

Vinylized nylon fabric that has eye appeal and is durable. Recommended for industrial use as well as safety awards and recreational activities. Double-stitched and taped seams.



SIZES: S-6XL

yellow, navy blue, black, orange, green, maroon

INDUSTRIAL

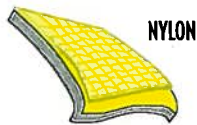
POLYURETHANE

OUTWORKER 60

A 200 Denier bright nylon oxford fabric coated with urethane. Attractive but rugged suit for the outdoors. Double stitched and taped seams.

SIZES: S-6XL

gold, green, blue, red



POLYURETHANE





UT 5000

A utility rainsuit designed by fleet managers and safety supervisors. This flexible and cool rainsuit has several design features that are unique to the utility industry. Tuck-away hood, inner sleeves, vented back, hook and loop take-up tabs on ankles, reflective 3M™ silver 1 1/2" tape placed around each sleeve and pant leg and across vented back. Double stitched and taped seams made with nylon outside/urethane inside. Meets NFPA-701 Flame Resistance Standards. A suit designed for the vehicle and utility market.



COOL WEAR 375

Nylon fabric coated with polyurethane. Cool, lightweight, durable and comfortable. Double stitched and taped seams. Meets NFPA-701 Flame Retardant Standards. Made with nylon outside/urethane inside.

SIZES: S-6XL

yellow, black, lime green

TUFF WEAR-275

Nylon with a polyurethane coating that gives higher abrasion and snag resistance than any material in its weight class. Meets NFPA-701 Flame Retardant Standards. Double stitched and taped seams. Made with urethane outside/nylon inside.

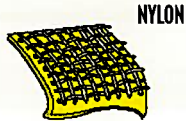
SIZES: S-6XL

yellow, black, high visibility orange



NYLON

POLYURETHANE



POLYURETHANE

NYLON



POLYURETHANE

NYLON



SIZES: S-6XL

yellow, high visibility orange, high visibility lime green



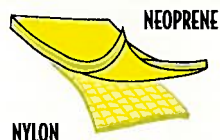
MAGNUM 45

A medium weight, heavy-duty nylon fabric coated with neoprene to provide maximum cold weather flexibility with a high resistance to abrasion. Double stitched and taped seams. Will stay pliable down to -20° F. Excellent chemical resistance.

SIZES: S-6XL



yellow, green, orange



NEOPRENE

NYLON

HYDRO-TEC 45 SUIT

(not pictured)

The HT 45 was designed specifically for industrial water blasting, steam cleaning, and mining applications. Includes the unique features of adjustable collar with take-up tabs, storm flap with inner snaps and hook and loop closure. Attached hood jacket. Bib style, chest high trousers with take-up tabs on cuffs. Double-stitched and taped seams.

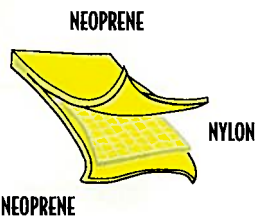
SIZES: S-6XL



yellow, green, orange

DOUBLE MAGNUM 445

A heavy-duty nylon fabric double coated with neoprene both inside and out to provide maximum protection and flexibility in temperatures down to -40°F. Flame retardant. Double-stitched and taped seams. Its physical properties resist: snags, tears, abrasions, heat, and aging.



NEOPRENE

NYLON

NEOPRENE



SIZES: S-6XL



yellow





1300S ▶

(Three-piece suit)
Made of 10mm vinyl.
Heat-sealed seams.
Jacket features raglan sleeves, snap-on hood, take-up snaps on wrists.
Elastic waist trousers have take-up snaps on cuffs.

SIZES: S-3XL
yellow

1400S ▶

(Three-piece suit) Made of 25mm vinyl. Heat sealed seams. Jacket features storm flap front, two covered pockets, snap-on hood, raglan sleeves, ventilated back, underarm vents, non-conductive snaps. Bib style, chest high trousers feature safety snap fly and take-up snaps on ankles. Sold as a complete suit only.

SIZES: S-4XL
yellow

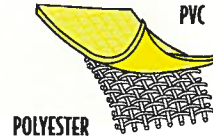
1000P (not pictured)

(Poncho) Made of 10mm vinyl. Attached hood with side snaps.

SIZES: 1 SIZE
blue

1600S ▼

(Three-piece suit) Made of 35mm vinyl on polyester. Heat sealed seams, low temperature flexibility. Jacket features side entry pockets, storm flap, nonconductive snaps on front and sleeves, ventilated back, underarm vents, detachable hood. Bib style, chest high trousers are standard when ordering as suit and feature safety fly and take-up snaps on ankles. Elastic waist trousers are also available with take-up snaps on ankles upon request. Jacket and trousers are available as separates. (Camo available in jacket and bib trousers only.) (Jacket with hood and trousers available separately.)



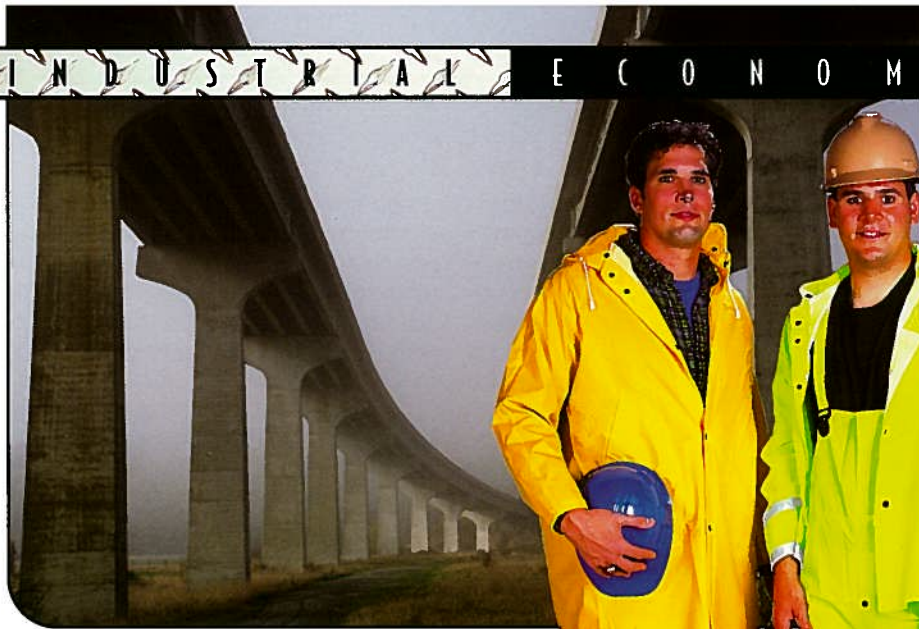
SIZES: S-4XL
yellow, orange, camouflage

1610AJ ▼

(Attached hood jacket) Made of 35mm vinyl on polyester. Features include take-up snaps on cuff, underarm vents, ventilated back, side entry pockets, and storm flap.

SIZES: S-4XL
yellow



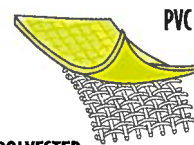


◀ **1800S**

(Three-piece suit) Made of 35mm vinyl on polyester. Same features as the 1600 with 1" reflective tape across ventilated back and two strips of reflective tape around each cuff. Side entry pockets with slash through access and underarm vents. Bib style, chest high trousers have safety fly, take-up snaps on cuffs, and two strips of reflective tape around cuffs. (Jacket with hood and trousers available separately)

SIZES: S-4XL

hi-visibility lime green



1650C

(Coat) Made of 35mm vinyl on polyester. This 48" long coat features storm flap front, snap-on hood, take-up snaps on sleeves, ventilated back, underarm vents, two side entry pockets with slash through access.

SIZES: S-4XL

yellow, black

1850C (not pictured)

(Coat) Same features as 1650 with 1" reflective tape across vented back and two stripes around cuffs.

SIZES: S-4XL

hi-visibility lime green

135S

(Three-piece suit) Made of 42mm heavy PVC/Nylon/PVC. Double-stitched and taped seams. Jacket has snaps on collar to accommodate hood. Collar is cotton tipped. Bib style, chest high trousers feature safety fly, take-up snaps on cuffs and waist. (Jacket with hood and trousers available separately)

SIZES: S-6XL

yellow

136S (not pictured)

(Three-piece suit) Made of 32mm PVC/Nylon/PVC. Electronically welded seams. Jacket with snap-on hood features storm flap, nonconductive snaps. Bib style, chest high trousers feature safety fly, take-up snaps on cuffs and waist.

SIZES: S-4XL

yellow



196ACA

(Attached hood coverall) Made of 35mm PVC/Polyester knit/PVC. Features inner sleeves and inner cuffs, welded seams for maximum protection. Zipper and snap front with storm flap. (welded seams).

SIZES: S-4XL

green



F A B R I C P R O P E R T I E S R A T I N G C H A R T

"The information provided in this chart is intended as a general guide only. The information is not based on your specific situation and Neese Industries, Inc. cannot guarantee them or accept any liability resulting from their use. THE ULTIMATE DETERMINATION OF SUITABILITY OF A PRODUCT FOR A PARTICULAR APPLICATION IS THE RESPONSIBILITY OF THE PURCHASER. Upon receipt of written request, we will provide swatches of the material in question to aid the purchaser and determine its suitability."

E - Excellent - G - Good - F - Fair - P - Poor

| Resistance to Acids, Inorganic | Neoprene Latex | Polyurethane | PVC |
|---------------------------------------|-----------------------|---------------------|------------|
| Carbonic Acid | E | E | E |
| Chlorine Water | E | F | E |
| Hydrobromic Acid | E | F | E |
| Hydrochloric Acid | G | F | E |
| Hydrogen Sulfide | G | G | E |
| Phosphoric Acid | E | G | E |
| Sulphuric Acid | G | F | E |
| Nitric Acid | G | F | E |
| Perchloric Acid | G | P | E |
| Hydrofluoric Acid | P | P | E |

| Inorganic Salts and Alkalis | Neoprene Latex | Polyurethane | PVC |
|------------------------------------|-----------------------|---------------------|------------|
| Ammonium Hydroxide | E | G | E |
| Potassium Hydroxide | E | F | E |
| Sodium Hydroxide | E | G | E |
| Calcium Hypochlorite | E | F | E |
| Ammonium Sulfate | E | G | E |
| Caustic Potash | E | F | E |
| Copper Chloride | G | F | E |
| Copper Sulfate | G | G | E |
| Potassium Dichromate | G | F | E |
| Calcium Chloride | E | G | E |
| Ferric Chloride | E | F | E |
| Tin Chloride | E | G | E |

| Organic Materials | Neoprene Latex | Polyurethane | PVC |
|--------------------------|-----------------------|---------------------|------------|
| Acetic Acid | E | G | E |
| Citric Acid | E | E | E |
| Formic Acid | E | G | E |
| Lactic Acid | E | G | E |
| Oleic Acid | E | G | E |
| Malic Acid | E | F | E |
| Stearic Acid | E | G | E |
| Tannic Acid | E | G | E |
| Carbolic Acid | E | F | E |

| Ketones and Aldehydes | Neoprene Latex | Polyurethane | PVC |
|------------------------------|-----------------------|---------------------|------------|
| Acetaldehyde | E | F | E |
| Butyraldehyde | E | F | E |
| Formaldehyde | E | F | E |
| Furfural | G | G | E |
| Benzaldehyde | G | F | E |
| Acetone | E | F | F |
| Methyl Ethyl Keytone | E | F | G |
| Chloroacetone | E | F | G |

| Alcohols | Neoprene Latex | Polyurethane | PVC |
|--------------------------|-----------------------|---------------------|------------|
| Amyl Alcohol (Fusel Oil) | E | E | E |
| Butyl Alcohol | E | E | E |
| Ethyl Alcohol | E | E | E |
| Methyl Alcohol | E | E | E |
| Propyl Alcohol | E | E | E |
| Benzyl Alcohol | E | E | E |
| Octyl Alcohol | E | E | E |
| Glycerine | E | E | E |
| Ethylene Glycol | E | E | E |
| Diacetone Alcohol | E | E | E |
| Triethanolamine | G | G | E |

| Hydrocarbons (Oils and Solvents) | Neoprene Latex | Polyurethane | PVC |
|---|-----------------------|---------------------|------------|
| Castor Oil | E | E | E |
| Coconut Oil | E | E | E |
| Cottonseed Oil | E | E | E |
| Mineral Oil | E | E | E |
| Petroleum Oils | E | E | E |
| Gasoline (S-R) | E | E | F |
| Gasoline (Cracked) | E | E | F |
| Coal Tar Solvents | G | E | F |
| Naphtha | E | E | F |
| Grease (All Kinds) | E | E | E |
| Kerosene (Pet.) | E | E | G |
| Kerosene (C-T) | F | E | G |
| Turpentine | E | E | G |
| Propane | G | E | E |
| Carbon Tetrachloride | G | G | G |
| Trichlorethylene | G | G | G |
| Perchlorethylene | G | G | F |
| Benzane (Benzol) | F | E | F |
| Toluol | G | G | F |
| Toluene | G | G | F |
| Butane | G | E | G |
| Hezane | E | E | G |
| Hylene | G | F | F |
| Cyclohezane | G | P | F |
| Benzyl Chloride | E | F | E |
| Methyl Chloride | E | F | E |
| Chloroform | G | G | E |

| Organic Esters | Neoprene Latex | Polyurethane | PVC |
|-----------------------|-----------------------|---------------------|------------|
| Amyl Acetate | G | G | G |
| Butyl Acetate | G | G | G |
| Ethyl Acetate | G | G | G |
| Methyl Acetate | E | G | G |
| Propyl Acetate | E | G | G |
| Ethyl Formate | E | G | G |
| Methyl Formate | E | G | G |
| Dibutyl Phthalate | E | G | E |
| Tricresyl Phosphate | E | G | E |

PVC resistance to penetration by most materials is normally excellent. Where P to F ratings are shown, continued exposure causes stiffening, but penetration failure is not necessarily accompanying.



• Also available •

deckSkins®

Rainwear designed for boating, sailing, and yachting.

Dry Rider®

Rainwear designed for today's rider.

MARSHLANDER®

Rainwear designed for hunting, fishing and other outdoor sporting activities.

RangeGear®

Western style rainwear designed for the horseman.

NEESE
INDUSTRIES, INC.

P.O. Box 1059 - Gonzales, Louisiana 70707 - 225.647-6553 - FAX 225.644-3517 - Toll Free 1.800.535.8042 - Customer Service Direct Line 1.888.724.6379
• visit our website at www.neeseind.com •